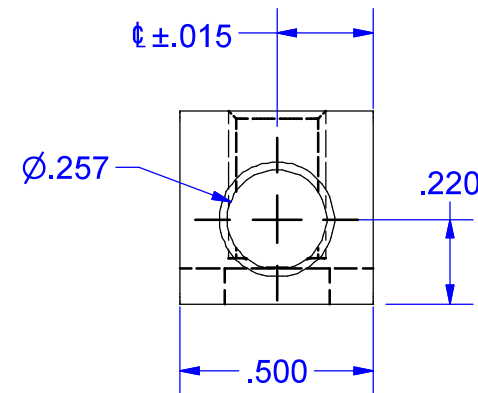
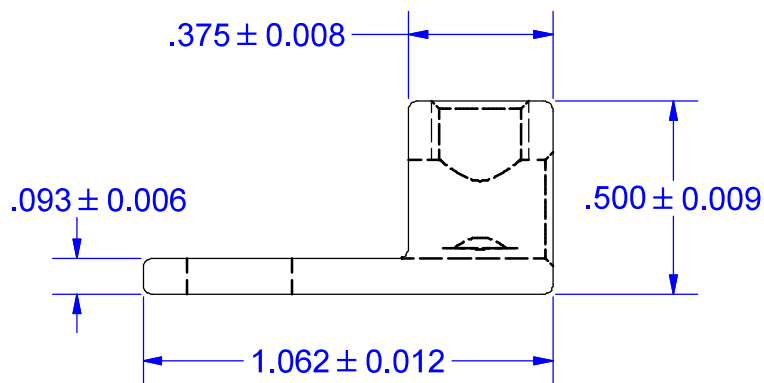


SCREW # 15717/15717CF-HT  
PLATED STEEL



**PART MARKED**

4-14 STR  
CU9AL  
S4  
IHI LOGO  
CSA LOGO  
UL LOGO

IHI UL/CSA Installation Guide to Drill or Enlarge Mounting Holes:

<https://lugsdirect.com/PDF%20Documents/IHI-MTG-HOLE-FIELD-MODS-UL&CSA-CERTIFICATIONS.pdf>

Cat. No. S4 Style No. ALL

■ Drill, Enlarge, or Modify Mounting Holes

- 1) Increase hole(s) dia. to 1/4 bolt (9/32 drill dia.)
- 2) Move location of mounting hole(s)
- 3) If buying blank lug, put custom hole(s) in.

FLEX WIRE 10-14 AWG WITH USE OF FERRULE

<small>THIS DRAWING AND DESIGN ARE THE PROPERTY OF INTERNATIONAL HYDRAULICS, INC., CLEVELAND, OHIO, AND MAY NOT BE DUPLICATED, USED FOR THE BASIS OF DESIGN OR MANUFACTURE WITHOUT THE WRITTEN PERMISSION OF INTERNATIONAL HYDRAULICS, INC., CLEVELAND, OHIO.</small>		INTERNATIONAL HYDRAULICS, INC.			
		TITLE: S4 (SALES) CONNECTOR			
GENERAL TOLERANCES ±.015 (±0.038)		SIZE:	DRAWN BY: TDS	DWG NO.: S4 SALES	REV:
MATERIAL: 6061-T6 (X1010)		DATE: 1/9/09		THIS IS A CAD DRAWING, DO NOT MANUALLY REVISE	
FINISH: TIN PLATE EMS					

NOT FOR USE WHERE FAILURE CREATES A HAZARD TO HUMAN HEALTH OR SAFETY. ALL PRODUCTS ARE SUBJECT TO THIS FULL DISCLAIMER: <http://www.ihiconnectors.com/disclaimer.html>

FOR FURTHER INFORMATION ON THE PROPER USE OF THIS PRODUCT IN SPECIFIC APPLICATIONS SEE <http://www.ihiconnectors.com/GuideToFlexFlexibleFineStrandedWireCableMechanicalLugsFAQ.html>  
<http://www.ihiconnectors.com/Technical-Data-Installation.htm>