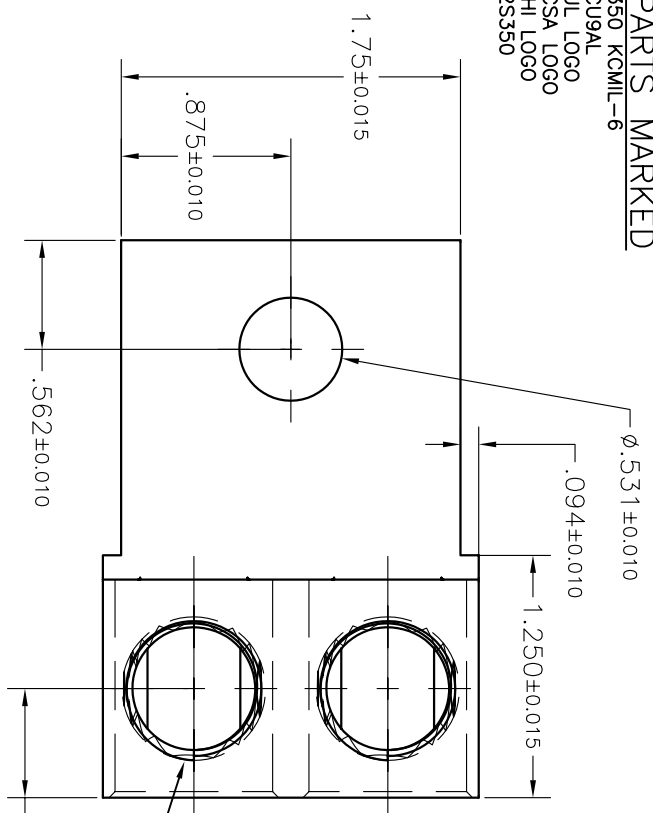
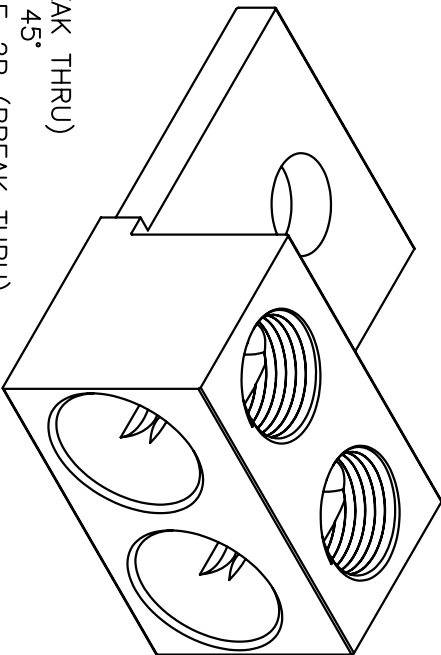


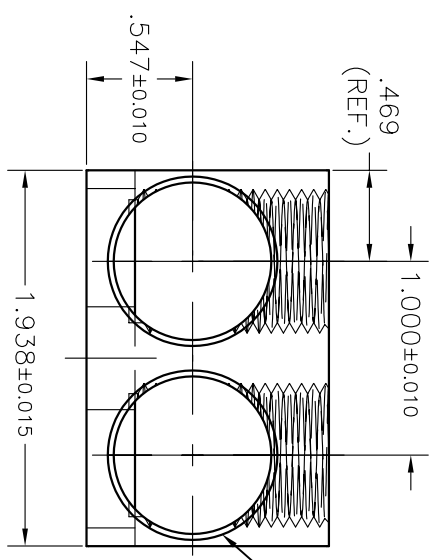
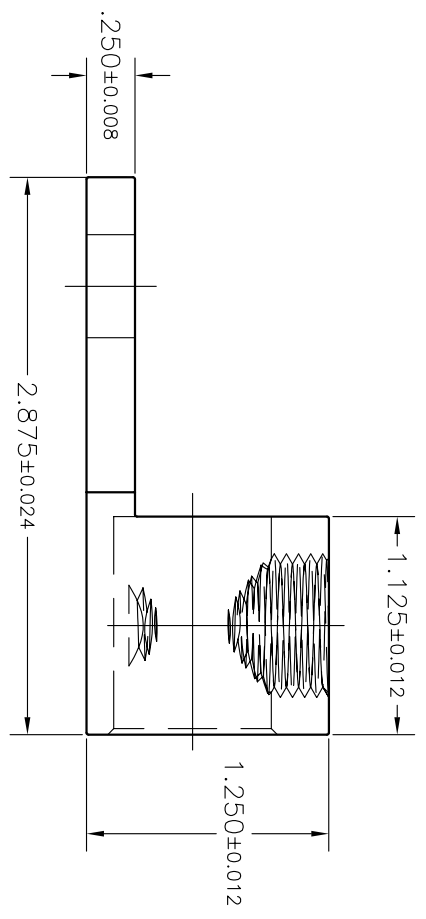
PARTS MARKED
 350 KCMIL-6
 CU9AL
 UL LOGO
 CSA LOGO
 IH LOGO
 2S350



DRILL ϕ .625 (BREAK THRU)
 CHAMFER .045 X 45°
 TAP 11/16-16UNF-2B (BREAK THRU)
 (2 PLACES)



DRILL ϕ .750 X 1.187 DEEP
 CHAMFER .031 X 45°
 (2 PLACES)



#	DESCRIPTION	DATE	APPROVED
1	INITIAL RELEASE	05/29/2008	Tim Smith
		2S350-T	

THIS DRAWING AND DESIGN ARE THE PROPERTY OF INTERNATIONAL HYDRAULICS, INC., CLEVELAND, OHIO, AND MAY NOT BE REPRODUCED, COPIED, OR TRANSMITTED IN ANY FORM OR BY ANY MEANS, ELECTRONIC OR MECHANICAL, INCLUDING PHOTOCOPYING, RECORDING, OR BY ANY INFORMATION STORAGE AND RETRIEVAL SYSTEM, WITHOUT THE WRITTEN PERMISSION OF INTERNATIONAL HYDRAULICS, INC., CLEVELAND, OHIO.

UNLESS OTHERWISE SPECIFIED:

1. DIMENSIONS IN INCHES
2. REMOVE ALL BURRS AND SHARP EDGES.
3. TOLERANCE ON DIM'S:
 - 1. DIMENSIONS IN INCHES: ±.005
 - 2. FRACTIONS (.000) ±.1/32
 - 3. ANGLES (00°) ±0.5°
 - 4. ANGLES (0.00°) ±0.05°

INTERNATIONAL HYDRAULICS, INC.

2S350-T

TRIMMED 2S350

MATERIAL: AS NOTED
 6061-T6 (X1020)
FINISH: AS NOTED
 TIN PLATE

SIZE: A **DRAWN BY: TDS** **CHECKED BY: XX** **SCALE: NTS**
DATE: 5/29/08 **DRAWING: 2S350-T** **REV: 1**

350 KCMIL-6 CU9AL
 IH 2S350

MARK #14696

THIS IS A CAD DRAWING. DO NOT MANUALLY REVISE