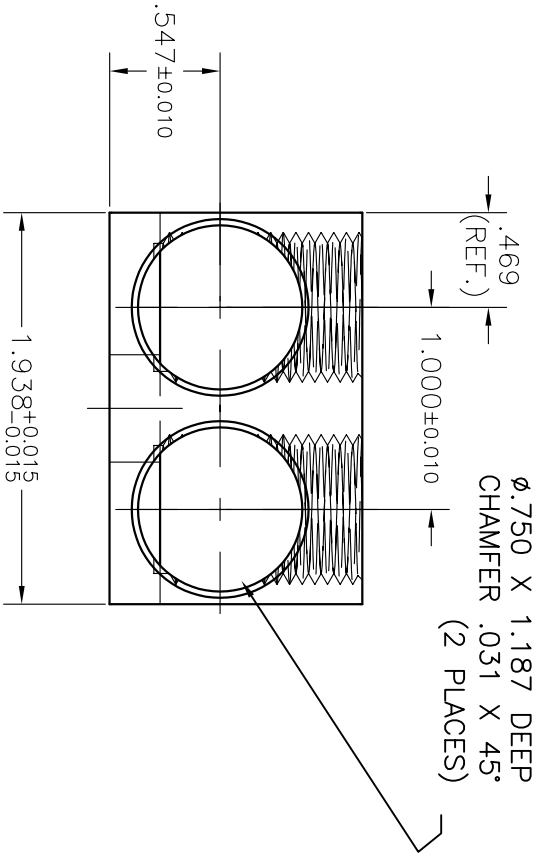
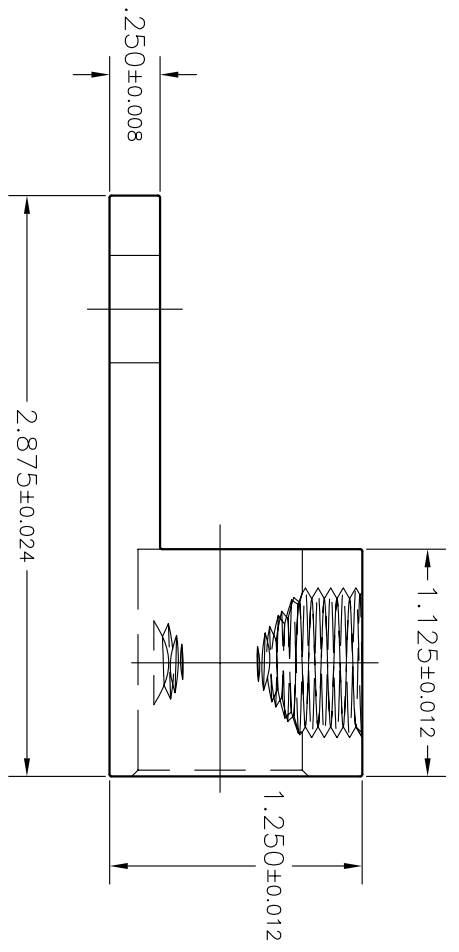
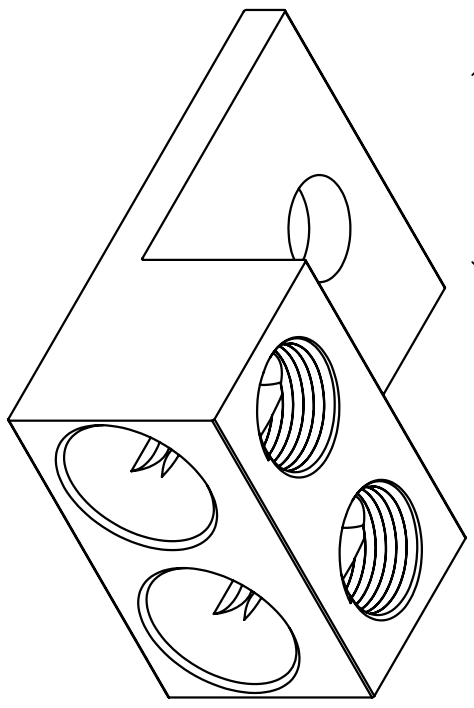
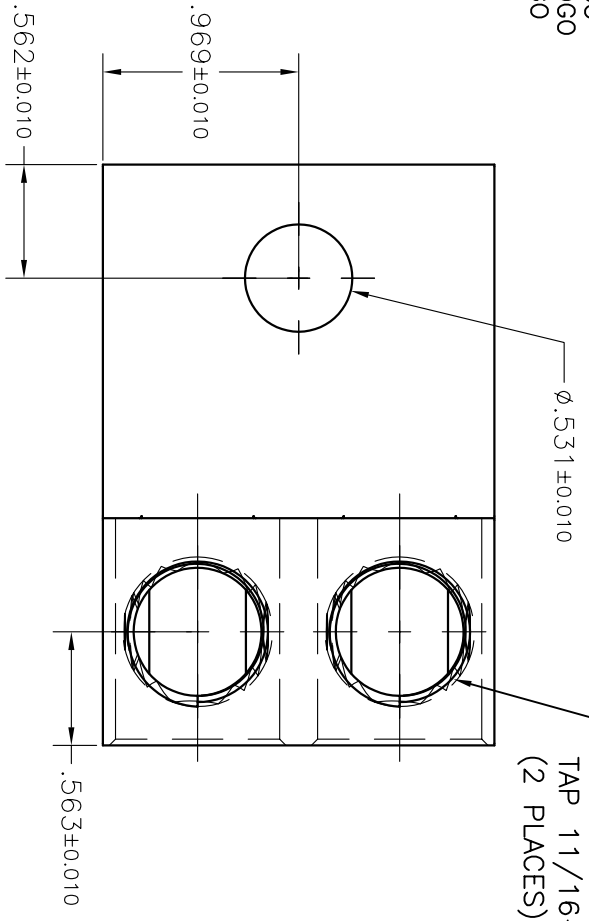


PARTS MARKED

350 KCMIL-6
 CU9AL
 UL LOGO
 CSA LOGO
 IHI LOGO
 2S350

#	DESCRIPTION	DATE	APPROVED
1	.531 wgs .375 .469 wgs .500 1.938 wgs 2.047 (REDRAW PRINT) 2S350	06/29/2008	TIM SMITH



INTERNATIONAL HYDRAULICS, INC.

TITLE: 2S350-53-56

WIRE RANGE 350 KCMIL - 6

THIS DRAWING AND DESIGN ARE THE PROPERTY OF INTERNATIONAL HYDRAULICS INC., CLEVELAND, OHIO, AND MAY NOT BE DUPLICATED, USED FOR BASIS OF DESIGN OR MANUFACTURE WITHOUT THE WRITTEN PERMISSION OF INTERNATIONAL HYDRAULICS INC., CLEVELAND, OHIO.

UNLESS OTHERWISE SPECIFIED:
 1. DIMENSIONS ARE IN INCHES.
 2. REMOVE ALL BURRS AND SHARP EDGES.
 3. TOLERANCE ON DIM'S
 2 PLACES (.00) ± .010
 3 PLACES (.000) ± .005
 FRACTIONS ± 1/32
 ANGLES (00°) ± 0.5°
 ANGLES (0.00°) ± 0.05°

MATERIAL: AS NOTED
 6061-T6 (X1020)

FINISH: AS NOTED
 TIN PLATED

SIZE: A
 DATE: 5/29/08
 DRAWN BY: TDS
 CHECKED BY: XX
 SCALE: NTS
 THIS IS A CAD DRAWING. DO NOT MANUALLY REVISE

350 KCMIL-6 CU9AL
 IHI 2S350

MARK #14969rev1