

Single Lug - Al

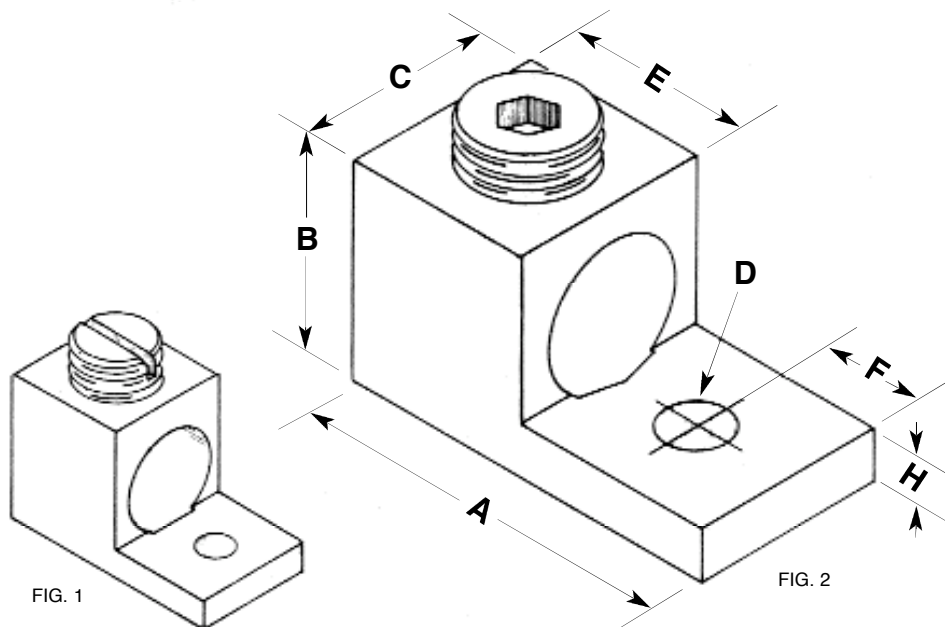


FIG. 1

FIG. 2

CAT. NO.	FIG.	WIRE RANGE CU/AL	DIMENSIONS (INCHES)						
			A	B	C	D	E	F	H
6T	1	4-14	0.835	0.5	0.375	0.193	0.375	0.25	0.1
4T	1	4-14	1.062	0.5	0.5	0.265	0.375	0.25	0.094
2T	1	2-14	1.156	0.56	0.5	0.265	0.47	0.25	0.1
0T	1	1/0-14	1.468	0.781	0.625	0.265	0.625	0.437	0.187
2/0T	2	2/0-14	1.468	0.781	0.625	0.265	0.625	0.437	0.187
3/0T	2	3/0-6	1.875	0.89	0.7	0.265	0.88	0.5	0.145
250T	2	250 MCM-6	2	1.125	1	0.328	1	0.406	0.25
300T	2	300 MCM-6	2	1.125	1	0.281	1	0.5	0.25
350T	2	350 MCM-6	2.25	1.25	1.125	0.406	1.125	0.5	0.25
500T	2	500 MCM-4	2.812	1.562	1.25	0.406	1.218	0.875	0.312
600T	2	600 MCM-2	3.125	1.562	1.5	0.531	1.375	0.875	0.437
800T	2	800 MCM-300 MCM	3.375	1.937	1.575	0.656	1.625	0.875	0.5
1000T	2	1000 MCM-500 MCM	3.375	1.937	1.75	0.656	1.625	0.875	0.5

Material: High Strength, High Conductive Aluminum Alloy 6061T6

Plating: Tin Over Copper