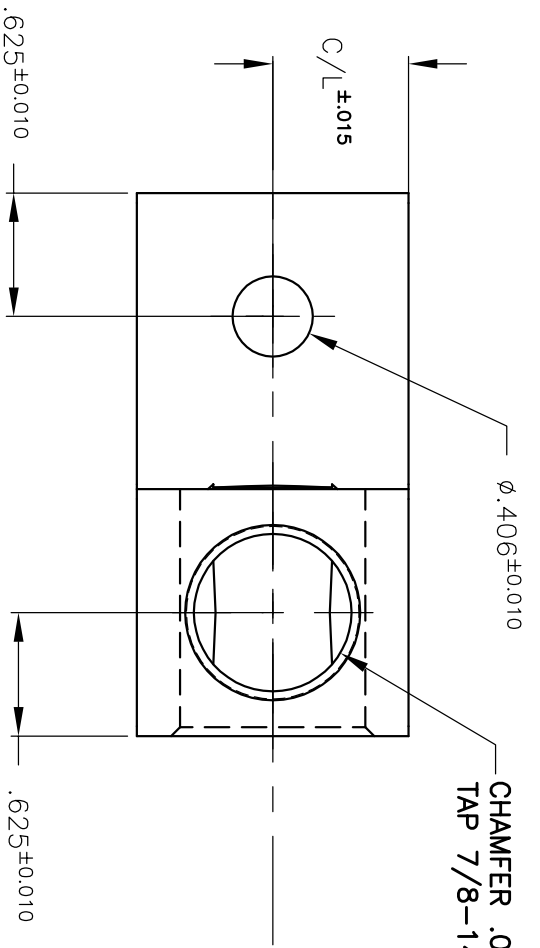
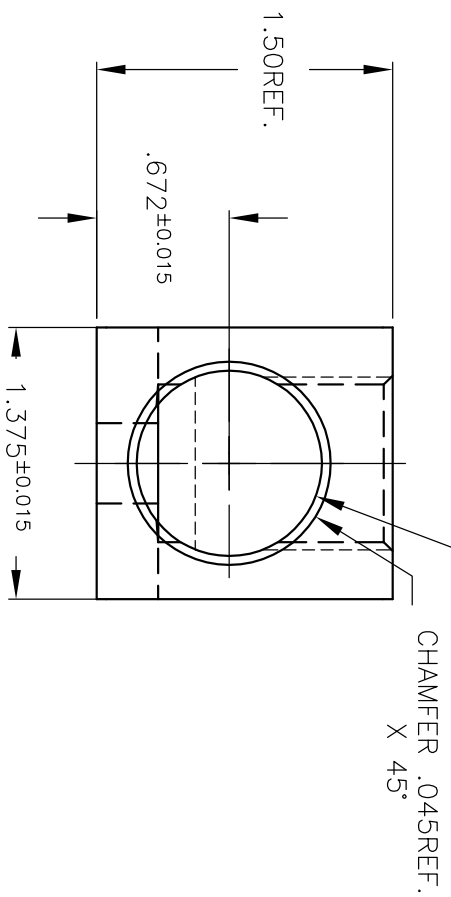
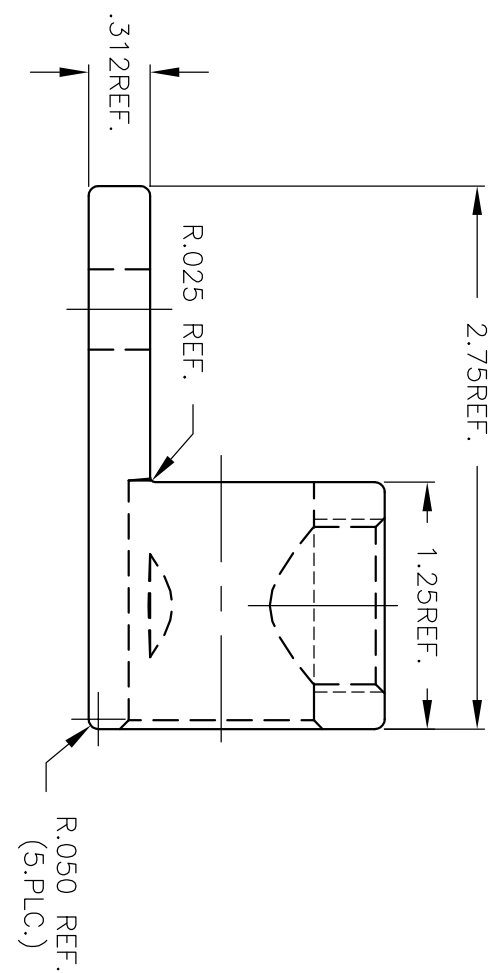


CHAMFER .045REF. X 45°  
TAP 7/8-14UNF-2B DEPTH TO Q.C. GAUGING REQUIREMENTS



PARTS MARKED  
600 Kcmil-4  
CU9AL  
UL logo  
CSA logo  
IHI logo  
S600

Ø.938<sup>+0.010</sup><sub>-0.005</sub>  
X THRU 1.25REF. MIN.  
X 1.4 MAX DEEP



NOTE: ASSEMBLE WITH (1) 14141 SCREW

THIS DRAWING AND DESIGN ARE THE PROPERTY OF INTERNATIONAL HYDRAULICS AND SHALL NOT BE REPRODUCED OR MANUFACTURED WITHOUT THE WRITTEN PERMISSION OF INTERNATIONAL HYDRAULICS INC., CLEVELAND, OHIO.  
UNLESS OTHERWISE SPECIFIED:  
1. DIMENSIONS ARE IN INCHES.  
2. REMOVE ALL BURRS AND SHARP EDGES.  
3. TOLERANCE ON DIMS:  
3 PLACES (.000) ± .010  
FRACTIONS ± 1/32  
ANGLES (00°) ± 0.05°  
ANGLES (0.00°) ± 0.05°

INTERNATIONAL HYDRAULICS, INC.

S600-41-63

MATERIAL:	EXTRUSION P/N X600	SIZE:	A	DRAWN BY:	TDS	CHECKED BY:		DRAWING:	S600-41-63	REV:	0
FINISH:		DATE:	11/16/05	SCALE:	NTS	THIS IS A CAD DRAWING, DO NOT MANUALLY REVERSE					