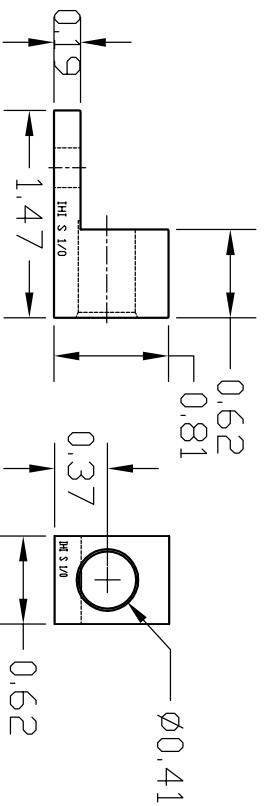
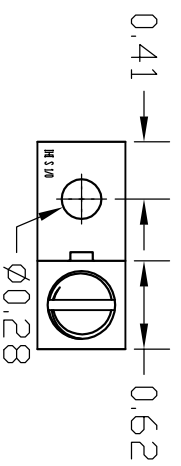
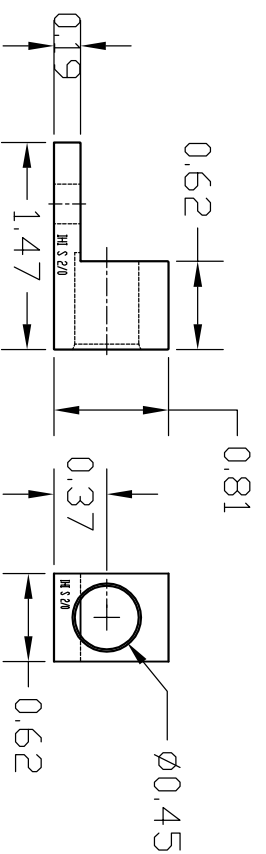
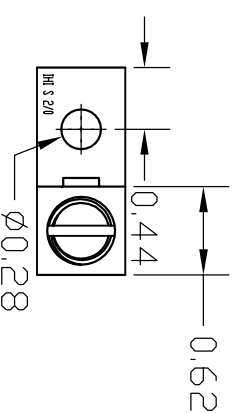


IHI S1/0, WIRE RANGE 1/0-14

IHI S2/0, WIRE RANGE 2/0-14



IHI S1/0, WIRE RANGE 1/0-14



IHI S2/0, WIRE RANGE 2/0-14

SCREW OPTIONS & DETAILS

- IHI S1/0 SLOTTED SCREW No.14224 .375 LONG
- IHI S1/0-HEX 3/16 HEX SCREW No. 11703 .625 LONG
- IHI S1/0-HEX-M 5mm HEX SCREW 11703-M .625 LONG
- IHI S2/0 SLOTTED SCREW No.14225 .562 LONG
- IHI S2/0-HEX 3/16 HEX SCREW No. 11703 .625 LONG
- IHI S2/0-HEX-M 5mm HEX SCREW 11703-M .625 LONG

<p>THIS DRAWING AND DESIGN ARE THE PROPERTY OF INTERNATIONAL HYDRAULICS INC. ALL RIGHTS ARE RESERVED. THIS DRAWING IS UNCONTROLLED. ANY REVISIONS OR CHANGES TO THIS DRAWING SHALL BE INDICATED BY A REVISION SYMBOL. THIS DRAWING IS NOT TO BE REPRODUCED OR COPIED IN ANY MANNER WITHOUT THE WRITTEN PERMISSION OF INTERNATIONAL HYDRAULICS INC., CLEVELAND, OHIO.</p>		<p>IHI CONNECTORS INTERNATIONAL HYDRAULICS INC.</p>	
<p>ALL DIMENSIONS ARE NOMINAL AND SUBJECT TO CHANGE WITHOUT NOTICE</p>			
<p>MATERIAL 6061-T6 ALUMINIUM</p>			
<p>FINISH TIN PLATE</p>			
DATE	Dec 1 2008	TITLE	S1/0-X, S2/0-X CAD LAYOUT DRAWING
DRAWN BY	CDMR	CHECK	S1/0, S2/0
DWG NO		REV	
<p>THIS IS A CAD DRAWING. DO NOT MANUALLY REVERSE</p>			