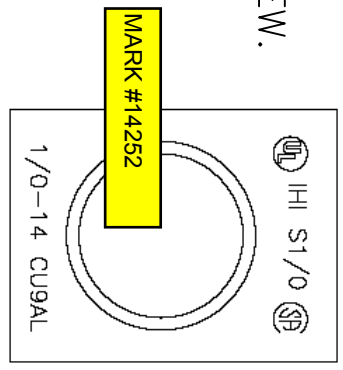
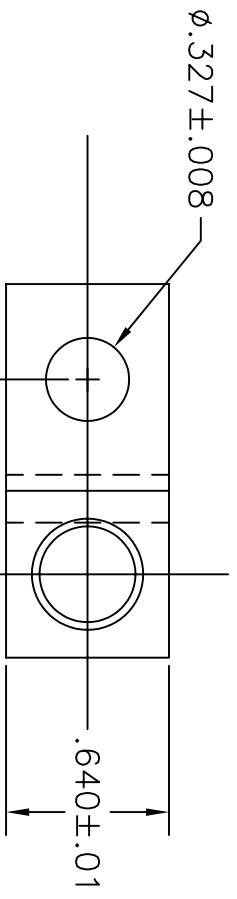


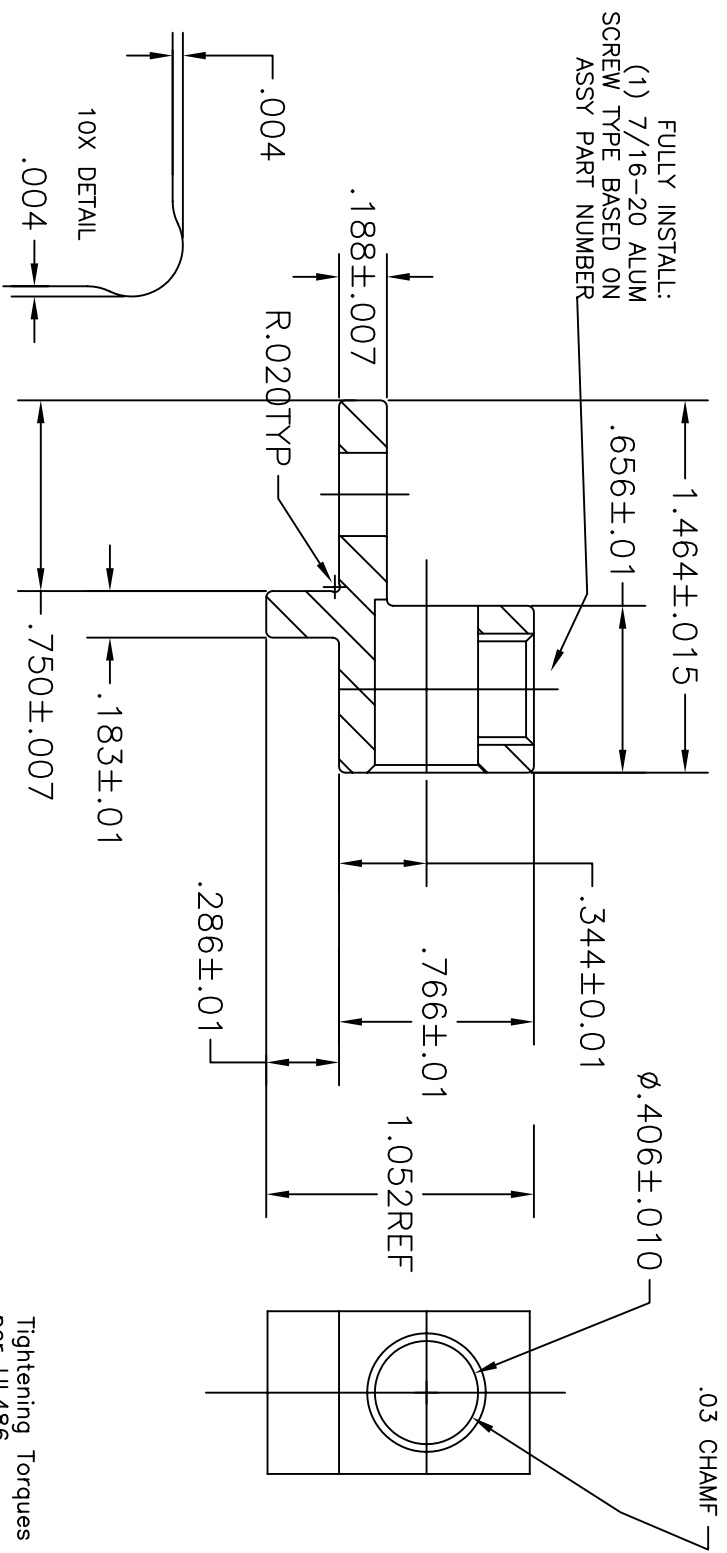
UNLESS OTHERWISE SPECIFIED, DIMENSIONS ARE IN INCHES. REMOVE ALL BURRS AND SHARP EDGES. THIS DRAWING AND DESIGN ARE THE PROPERTY OF INTERNATIONAL HYDRAULICS, INC., MENTOR, OHIO. IT MAY NOT BE REPRODUCED OR USED FOR THE BASIS OF DESIGN OR MANUFACTURE, WITHOUT THE WRITTEN PERMISSION OF INTERNATIONAL HYDRAULICS, INC.

REVISIONS		NR.	DESCRIPTION	BY	DATE
		1	UPDATE TO EXRN PRINT & RELEASE TO PRODCIN	CDMR	10/21/07

S1/0-TP-XX
 S1/0-TP USE 14224 SLOTTED SCREW.
 S1/0-TP-HEX USE 11703 HEX SKT SCREW.



.375 ± 0.012 CRITICAL FOR ASSEMBLY



Tightening Torques
 per UL486

International Hydraulics
 7638 ST. CLAIR AVE., MENTOR, OHIO

DWN BY: CDMR	TITLE: DUAL RATED 1/0 Turn Prevent Lug	REV#
DATE: 8/17/07	MATERIAL: 6061-T6 TIN PLT	DWG# S1/0-TP-XXX