



International Hydraulics Inc.

ihconnectors.com™

Wire Size Rated Torque

4-6 AWG 45 IN. LBS.

8 AWG 40 IN. LBS.

10-14 AWG 35 IN. LBS.

4-14 CU9

**To be used with
Manufacturer Installation
Guide**



Listed 84JM
ZMVV, ZMVV7
E129884



200116,
6223-02 CAN,
6332-82 US

**Pressure Terminal
Connectors**

NRTL Cat. No.

B4B



ihconnectors.com/b4b-install



ihconnectors.com/striplength

Possible mounting and anti rotation methods. Mounting hardware and bus supplied by customer unless otherwise indicated.

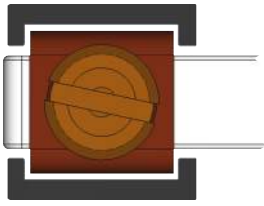


Fig. 1 Plastic

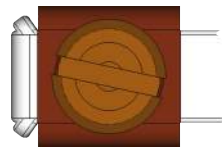


Fig. 2A Retention nubs to retain body on bus
See Fig. 2B

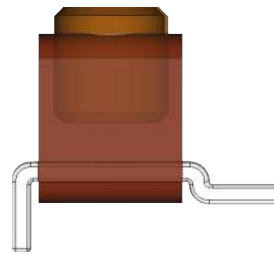


Fig. 2B

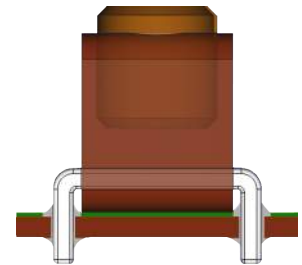
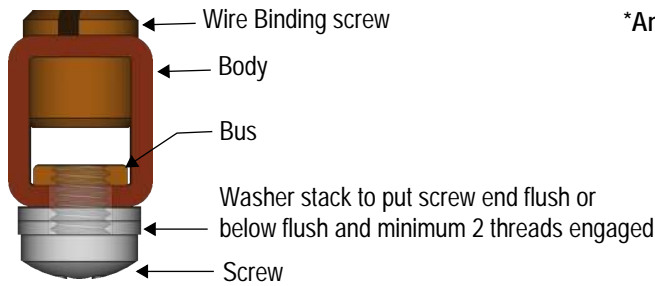


Fig. 3 PCB Mount
Included with B4B-PCB-B



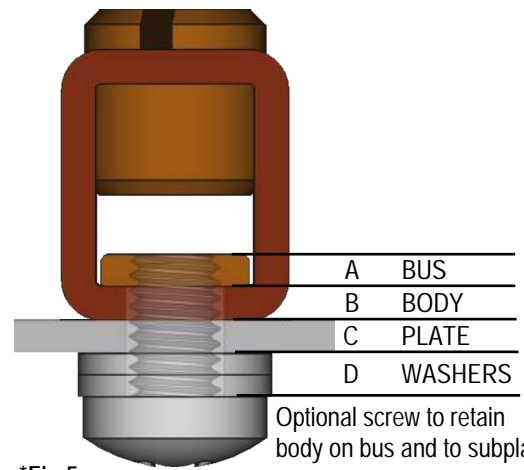
*Fig 4. Optional screw to retain body on bus

*Anti rotation means for single screw mounting is usually required.

- Anti rotation may be using one or more of the following:
1. The bus [Fig.3]
 2. Close fitting walls (plastic) [Fig. 1]
 3. Metal cabinet wall (grounding) [Fig. 5]

Washers #10/M5						
Dimn	SAE Plain		Serrated ID		DIN Plain	
	Inch	mm	Inch	mm	Inch	mm
D	0.5	13	0.38	9.7	0.39	9.9
d	0.22	5.6	0.21	5.4	0.21	5.3
**t	0.046	1.17	0.024	0.6	0.04	1
h	-	-	0.04-0.05	1-1.2	-	-

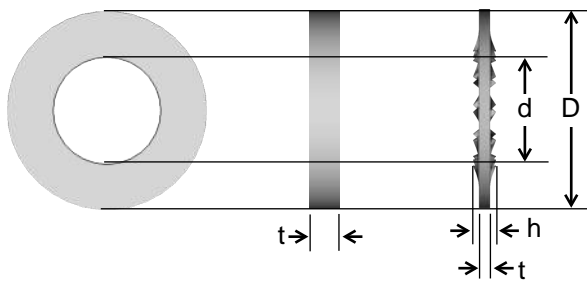
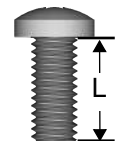
Guide only - Dimensions Vary
**Thick standard and thin types may be used.



*Fig 5.

Optional mounting screw length to equal A+B+C+D

Standard Lengths "L" of Screws					
#10-32			M5-0.8		
1/4"	.25"	6.3mm	5mm	0.20"	
5/16"	.31"	7.9mm	8mm	0.31"	
3/8"	.37"	9.5mm	10mm	0.39"	



Wire binding screw standard: Brass slotted
Wire binding screw special order: Zinc plated steel or stainless steel

Permitted bus sizes brass/copper alloy, bare or tin plated 0.25 x 0.062 to 0.30 x 0.10

The tang (bus bar) that the connector is intended to be used with:

- a) Material of tang; (Brass or copper alloy)
- b) Plating on tang; None or Tin plated
- c) Minimum cross-section of tang; 0.25" X 0.0625" (maximum 0.30" x .10").
- d) Material of optional mounting screw; steel, zinc plated or stainless size #10-32 / M5-0.80
- e) Use of optional mounting screw washer, type and size; #10 SAE flat thin or thick / 10# SAE serrated / DIN M5 washer(s) total thickness for 2 threads screw engagement in bus thread or body thread
- f) Torque for optional mounting screw to be used to secure the connector to the tang. Minimum 15 in-lbs