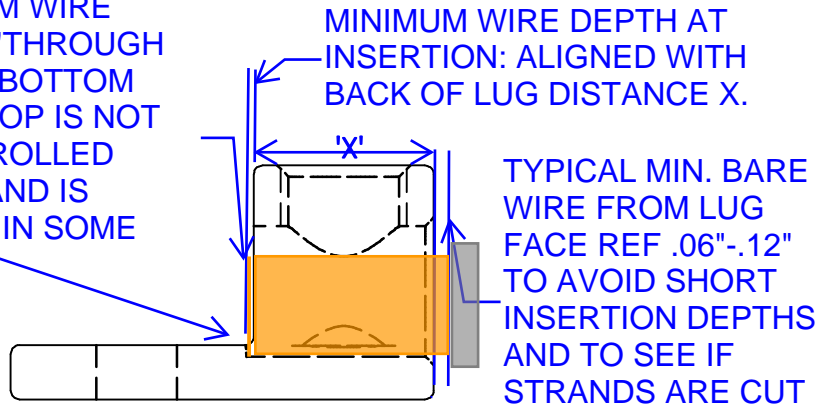


IHI CONNECTORS (R) WIRE INSERTION DEPTH PRACTICES

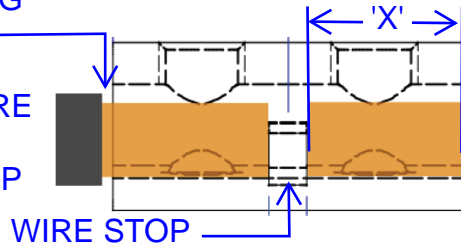
MAXIMUM WIRE DEPTH: "THROUGH X". THE BOTTOM WIRE STOP IS NOT A CONTROLLED DEPTH AND IS ABSENT IN SOME LUGS.



SPLICER/REDUCER LUGS

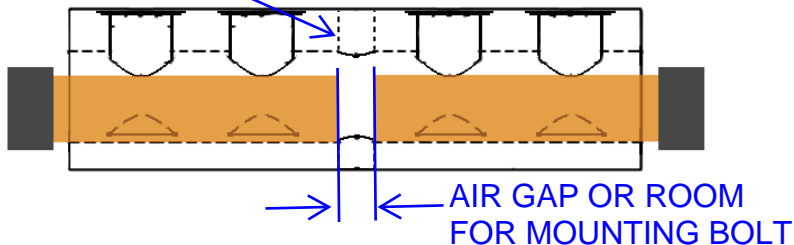
BARE WIRE FROM LUG FACE REF .06"-.12"

SPLICER WITH INTERNAL WIRE STOP: WIRES SHOULD BE INSERTED TO THE WIRE STOP

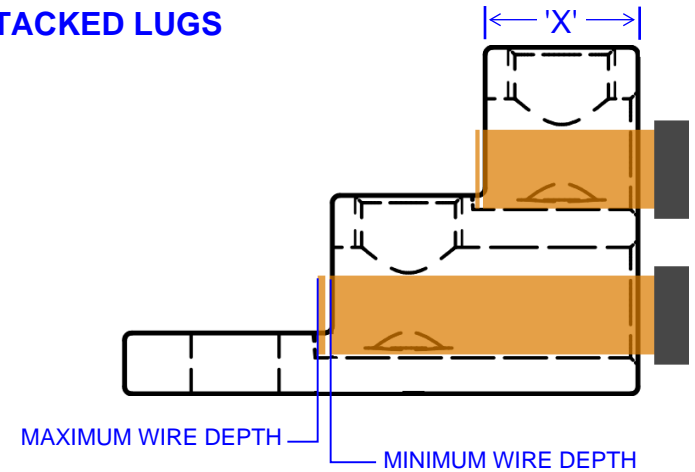


SPLICER WITHOUT INTERNAL WIRE STOP: WIRES SHOULD BE INSERTED TO THE SIGHT/BOLT HOLE WITH ALLOWANCE FOR AIR GAP BETWEEN WIRES

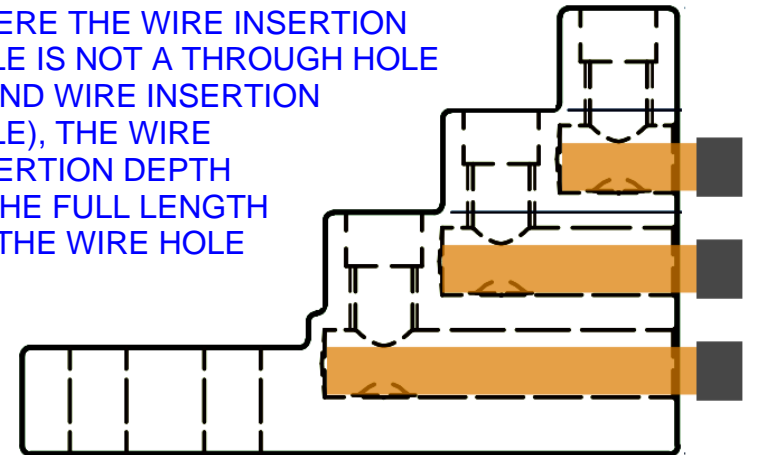
FOR MOUNTING BOLT OR SIGHT HOLE



TIERED/STACKED LUGS



WHERE THE WIRE INSERTION HOLE IS NOT A THROUGH HOLE (BLIND WIRE INSERTION HOLE), THE WIRE INSERTION DEPTH IS THE FULL LENGTH OF THE WIRE HOLE



THROUGH HOLE, NO WIRE STOP

THROUGH HOLE WITH WIRE STOP

BLIND WIRE INSERTION HOLE

BARE WIRE FROM LUG FACE REF .06"-.12"

