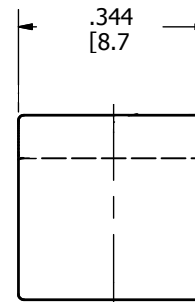
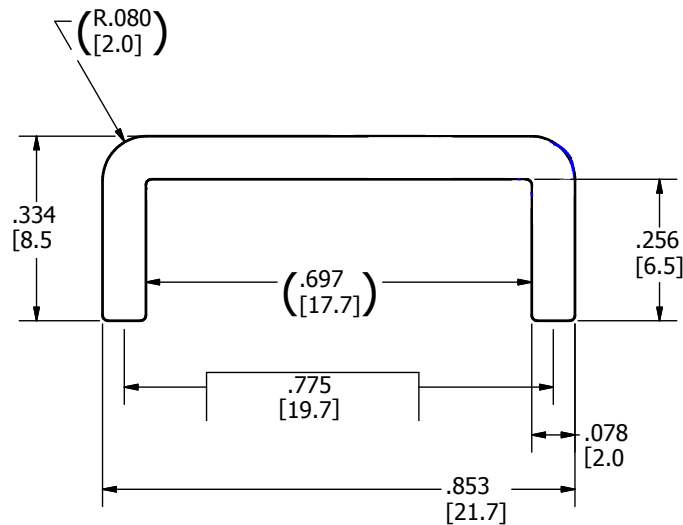
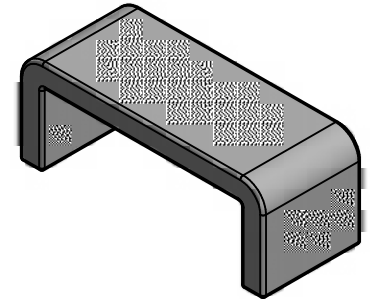


REVISIONS			
Rev	Date	By	Description
2	9/4/2019	CDMR	INITIAL RELEASE
3	12/13/2019	SB	ADD FIG. 1 AND FULL DEPTH ON GO GAUGE
4	3/12/2020	LLS	STANDARDIZE NOTES, FORMATTING, AND MATERIAL; ADD SG1054



NOT FOR USE WHERE FAILURE CREATES A HAZARD TO HUMAN HEALTH OR SAFETY. ALL PRODUCTS ARE SUBJECT TO THIS FULL DISCLAIMER:  
<https://www.ihiconnectors.com/disclaimer.html>

FOR FURTHER INFORMATION ON THE PROPER USE OF THIS PRODUCT IN SPECIFIC APPLICATIONS SEE  
[https://www.ihiconnectors.com/High\\_Amp\\_Wide\\_Trace\\_PCB\\_Wire\\_Connection.html](https://www.ihiconnectors.com/High_Amp_Wide_Trace_PCB_Wire_Connection.html)  
<https://www.ihiconnectors.com/Technical-Data-Installation.htm>

THIS DRAWING AND DESIGN ARE THE PROPERTY OF INTERNATIONAL HYDRAULICS, INC., CLEVELAND, OHIO, AND MAY NOT BE DUPLICATED, USED FOR THE BASIS OF DESIGN OR MANUFACTURE WITHOUT THE WRITTEN PERMISSION OF INTERNATIONAL HYDRAULICS, INC., CLEVELAND, OHIO.		<b>INTERNATIONAL HYDRAULICS, INC.</b>		
GENERAL TOLERANCES +/- .015		TITLE: <b>2/0 PCB STAPLE BUS</b> <b>B2-0-PCB STAPLE</b>		
MATERIAL: <b>C110</b>	SIZE: <b>A</b>	DRAWN BY: <b>CDMR</b>	DWG NO.: <b>15723</b>	REV: <b>4</b>
FINISH: <b>TIN/Ni SOLDERABLE</b>	DATE: <b>9/4/2019</b>	<b>IHI CONNECTORS</b>		