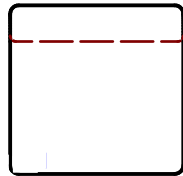
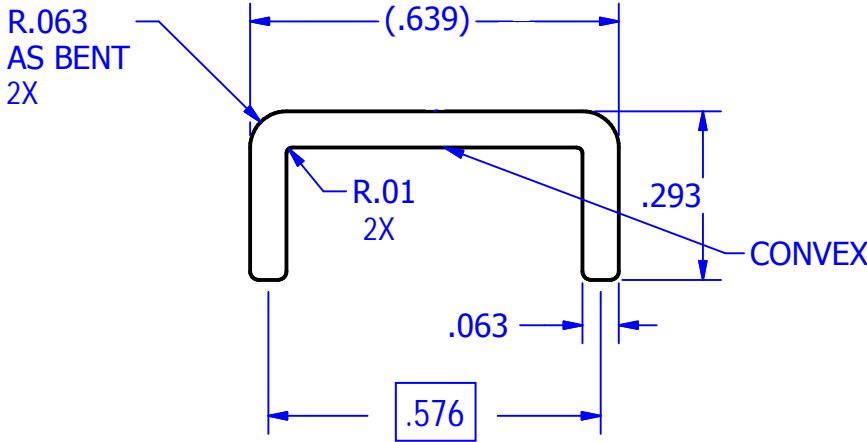
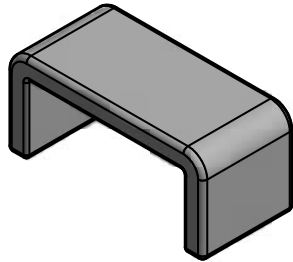
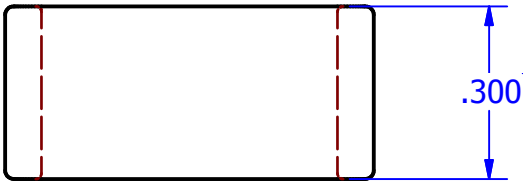


REVISIONS			
Rev	Date	By	Description
1	6/20/2019	CDMR	RELEASED, ADDED GAUGE PLATE
2	6/24/2019	CDMR	INCREASE .551 TO .576
3	3/6/2020	LLS	STANDARDIZE NOTES, MATERIAL, PLATING, FORMATTING



NOT FOR USE WHERE FAILURE CREATES A HAZARD TO HUMAN HEALTH OR SAFETY. ALL PRODUCTS ARE SUBJECT TO THIS FULL DISCLAIMER:
<https://www.ihconnectors.com/disclaimer.html>

FOR FURTHER INFORMATION ON THE PROPER USE OF THIS PRODUCT IN SPECIFIC APPLICATIONS SEE
https://www.ihconnectors.com/High_Amp_Wide_Trace_PCB_Wire_Connection.html
<https://www.ihconnectors.com/Technical-Data-Installation.htm>

THIS DRAWING AND DESIGN ARE THE PROPERTY OF INTERNATIONAL HYDRAULICS, INC., CLEVELAND, OHIO, AND MAY NOT BE DUPLICATED, USED FOR THE BASIS OF DESIGN OR MANUFACTURE WITHOUT THE WRITTEN PERMISSION OF INTERNATIONAL HYDRAULICS, INC., CLEVELAND, OHIO.		INTERNATIONAL HYDRAULICS, INC.			
GENERAL TOLERANCES +/- .015		TITLE: 15810 B4B-B-PCB STAPLE			
MATERIAL: C110	SIZE: A	DRAWN BY: CDMR	DWG NO.: 15810	REV: 3	
FINISH: TIN/Ni SOLDERABLE	DATE: 5/26/2019		IHI CONNECTORS		