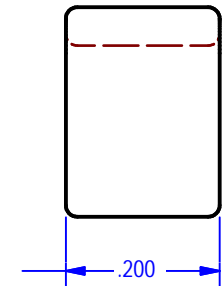
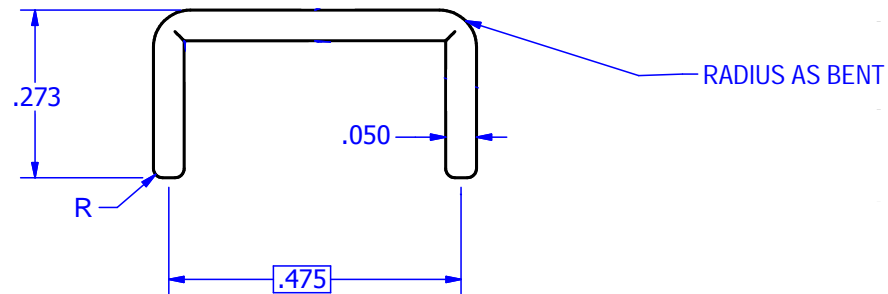
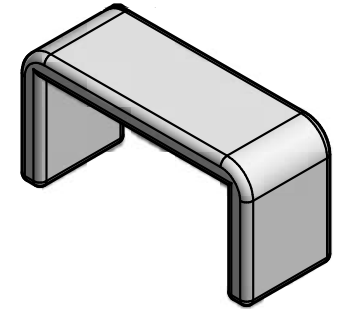


REVISIONS			
Rev	Date	By	Description
0	6/18/2019	CDMR	INITIAL RELEASE
1	3/7/2020	LLS	STANDARDIZE NOTES, MATERIAL, PLATING, FORMATTING



NOT FOR USE WHERE FAILURE CREATES A HAZARD TO HUMAN HEALTH OR SAFETY. ALL PRODUCTS ARE SUBJECT TO THIS FULL DISCLAIMER:
<https://www.ihconnectors.com/disclaimer.html>

FOR FURTHER INFORMATION ON THE PROPER USE OF THIS PRODUCT IN SPECIFIC APPLICATIONS SEE
https://www.ihconnectors.com/High_Amp_Wide_Trace_PCB_Wire_Connection.html
<https://www.ihconnectors.com/Technical-Data-Installation.htm>

THIS DRAWING AND DESIGN ARE THE PROPERTY OF INTERNATIONAL HYDRAULICS, INC., CLEVELAND, OHIO, AND MAY NOT BE DUPLICATED, USED FOR THE BASIS OF DESIGN OR MANUFACTURE WITHOUT THE WRITTEN PERMISSION OF INTERNATIONAL HYDRAULICS, INC., CLEVELAND, OHIO.	INTERNATIONAL HYDRAULICS, INC.			
	TITLE: .200 X .050 COPPER STAPLE B6B-PCB STAPLE			
GENERAL TOLERANCES .015+/-	SIZE:	DRAWN BY:	DWG NO.:	REV:
C110	A	CDMR	15812	1
FINISH: TIN/Ni SOLDERABLE	DATE:	IHI CONNECTORS		
	6/18/2019			