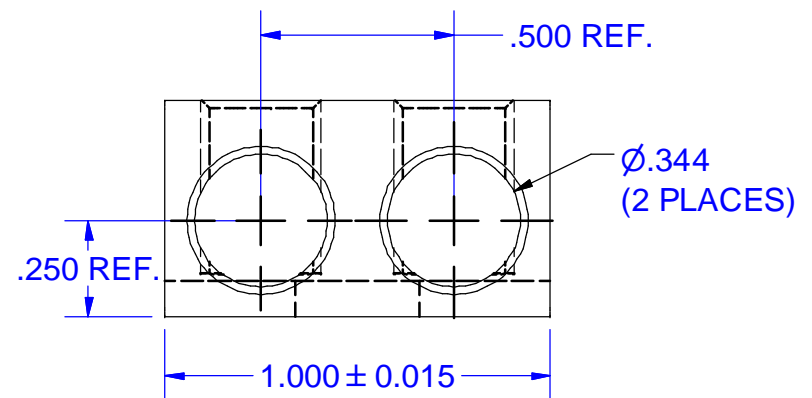
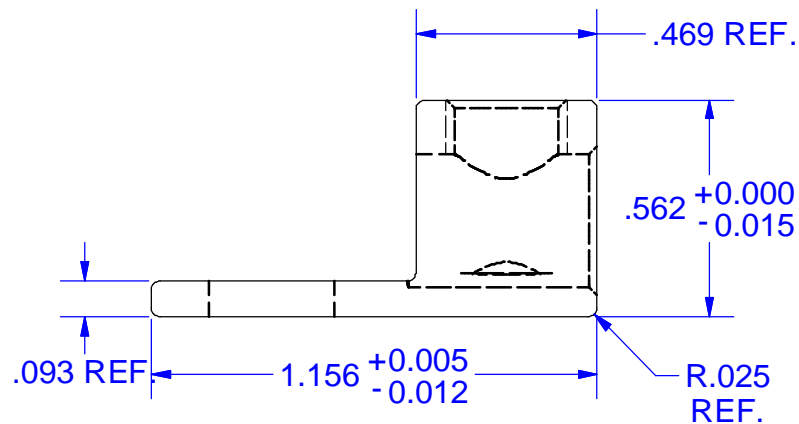


Cat. No. S2 Style No. ALL
■ Drill, Enlarge, or Modify Mounting Holes
 1) Increase hole(s) dia. to 5/16 bolt (.323 drill dia.)
 2) Move location of mounting hole(s)
 3) If buying blank lug, put custom hole(s) in.



MARKING
 S2
 IHI Logo
 CSA Logo
 UL Logo
 2-14
 CU9AL

NOTE:
 PARTS TO BE SHIPPED WITH TORQUE VALUES ON UNIT CONTAINER

NOT FOR USE WHERE FAILURE CREATES A HAZARD TO HUMAN HEALTH OR SAFETY. ALL PRODUCTS ARE SUBJECT TO THIS FULL DISCLAIMER: <http://www.ihconnectors.com/disclaimer.html>

FOR FURTHER INFORMATION ON THE PROPER USE OF THIS PRODUCT IN SPECIFIC APPLICATIONS SEE <http://www.ihconnectors.com/GuideToFlexFlexibleFineStrandedWireCableMechanicalLugsFAQ.html>

<http://www.ihconnectors.com/Technical-Data-Installation.htm>

THIS DRAWING AND DESIGN ARE THE PROPERTY OF INTERNATIONAL HYDRAULICS, INC., CLEVELAND, OHIO, AND MAY NOT BE DUPLICATED, USED FOR THE BASIS OF DESIGN OR MANUFACTURE WITHOUT THE WRITTEN PERMISSION OF INTERNATIONAL HYDRAULICS, INC., CLEVELAND, OHIO.		INTERNATIONAL HYDRAULICS, INC.		
GENERAL TOLERANCES $\pm .015$ (± 0.038)		TITLE: 2S2 CONNECTOR		
MATERIAL: 6061-T6 (1011)	SIZE:	DRAWN BY: TDS	DWG NO.: 2S2 (SALES)	REV:
FINISH: TIN PLATE EMS	DATE: 8/17/09	IHI CONNECTORS		