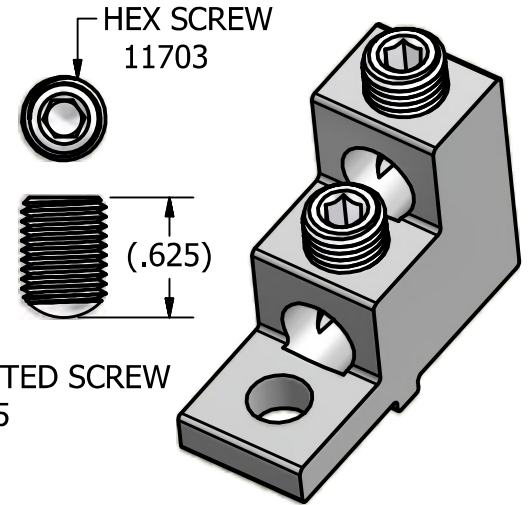
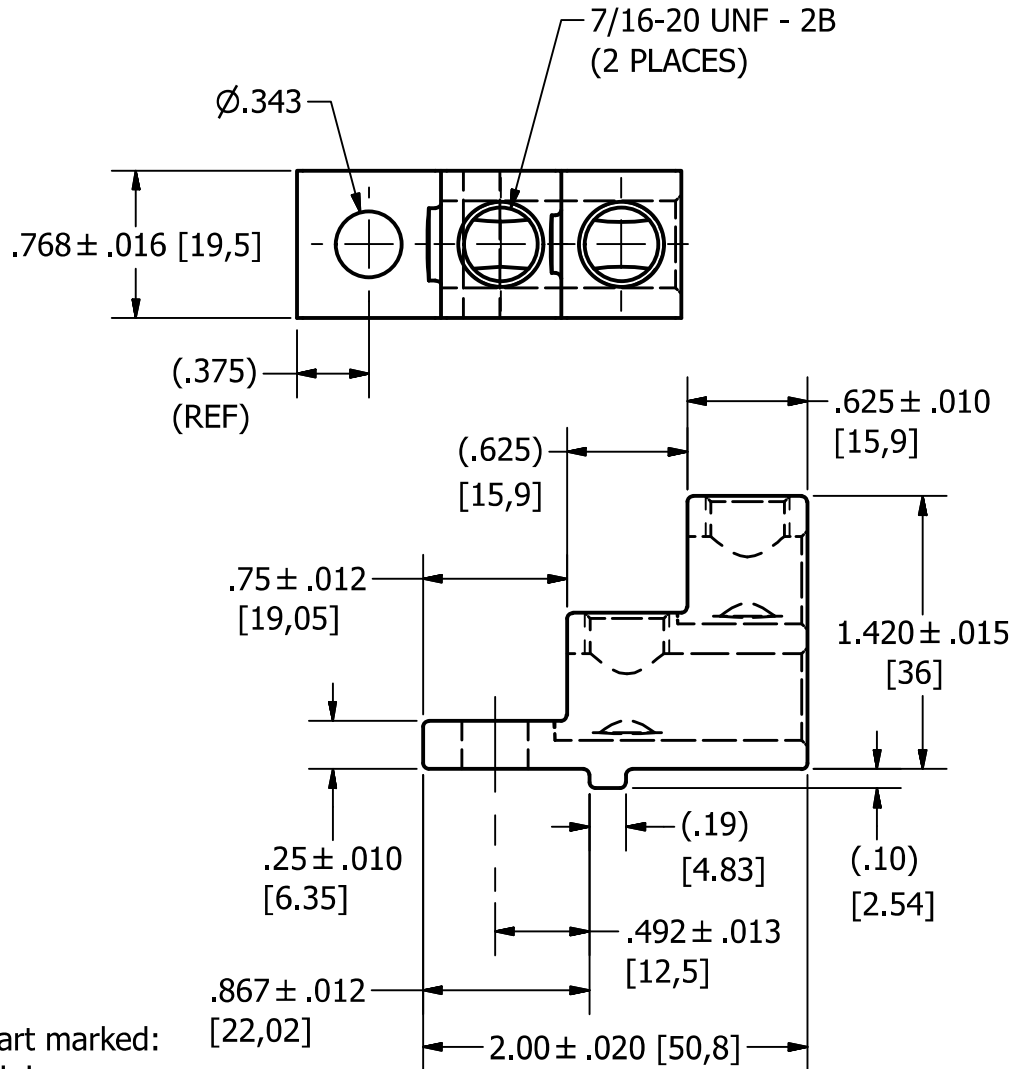
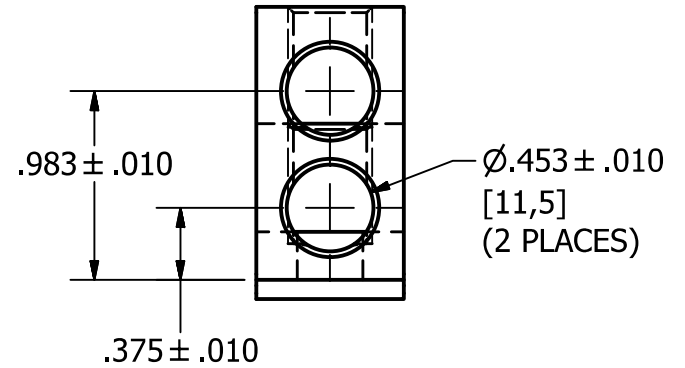


NOT FOR USE WHERE FAILURE CREATES A HAZARD TO HUMAN HEALTH OR SAFETY. ALL PRODUCTS ARE SUBJECT TO THIS FULL DISCLAIMER: <http://www.ihconnectors.com/disclaimer.html>

FOR FURTHER INFORMATION ON THE PROPER USE OF THIS PRODUCT IN SPECIFIC APPLICATIONS SEE <http://www.ihconnectors.com/GuideToFlexFlexibleFineStrandedWireCableMechanicalLugsFAQ.html>  
<http://www.ihconnectors.com/Technical-Data-Installation.htm>



ALT SLOTTED SCREW  
P/N 14225



Part marked:  
UL Logo  
CSA Logo  
IHI  
2S2/0  
2/0-14  
CU9AL

MAY BE USED WITH 5/16 HEX BOLT OR M8 HEX BOLT  
USE SAE STYLE WASHER TYP .69 [17,5] MAX DIA.  
OR WASHERHEAD BOLT.

THIS DRAWING AND DESIGN ARE THE PROPERTY OF INTERNATIONAL HYDRAULICS, INC., CLEVELAND, OHIO, AND MAY NOT BE DUPLICATED, USED FOR THE BASIS OF DESIGN OR MANUFACTURE WITHOUT THE WRITTEN PERMISSION OF INTERNATIONAL HYDRAULICS, INC., CLEVELAND, OHIO.		INTERNATIONAL HYDRAULICS, INC.		
GENERAL TOLERANCES ±.015 (±0,038)		TITLE: DUAL 2/0-14 LUG FOR SWITCH BUS MOUNT 20-25mm WIDE		
MATERIAL: T-6061	SIZE: A	DRAWN BY: TDS	DWG NO.:	REV:
FINISH:	DATE: 9/22/15	S2-0-TP-STK-34-49-HEX 0		
		<b>IHI CONNECTORS</b>		