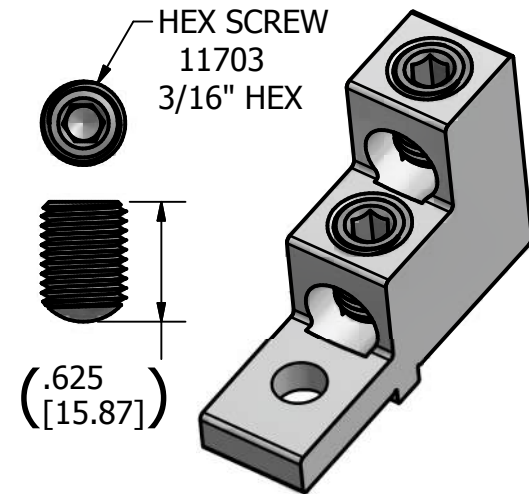
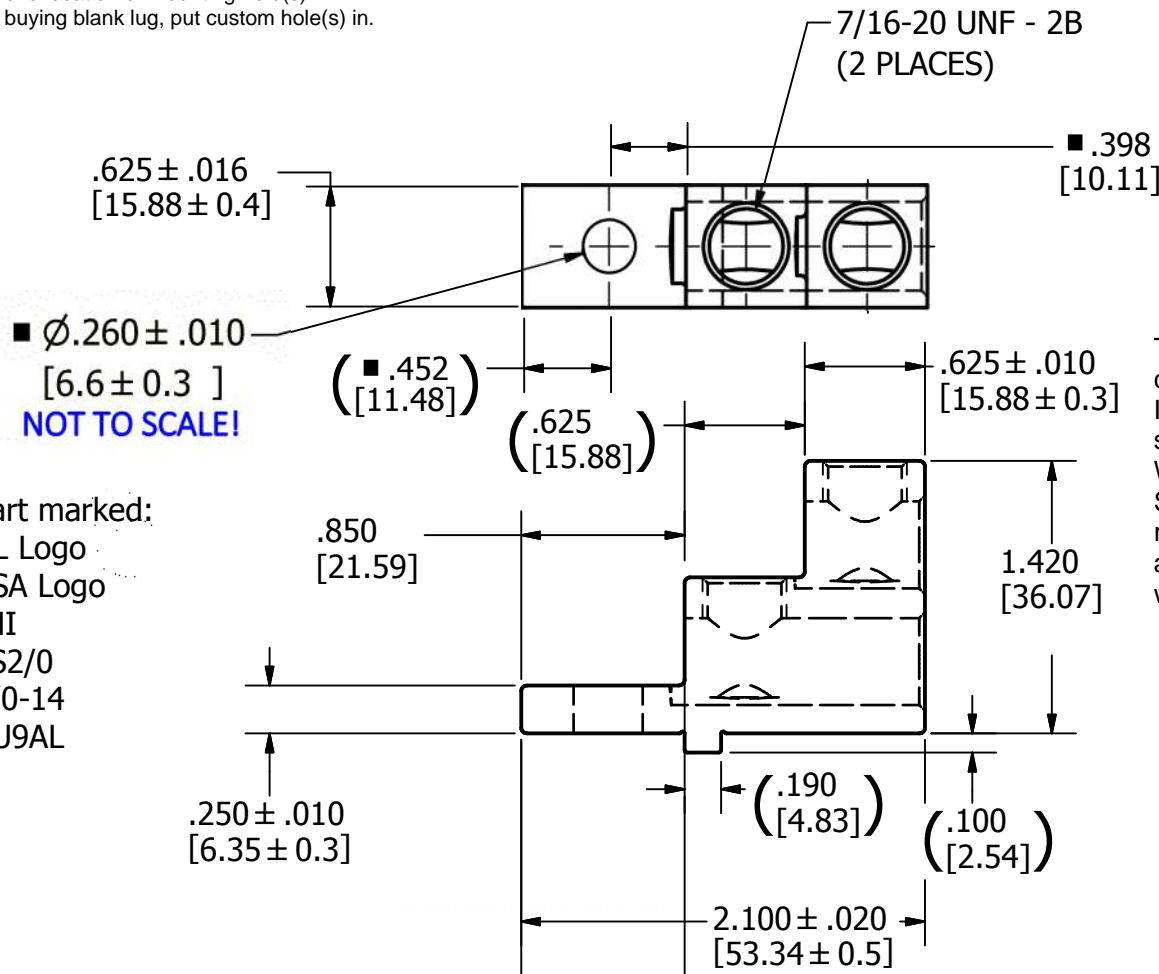


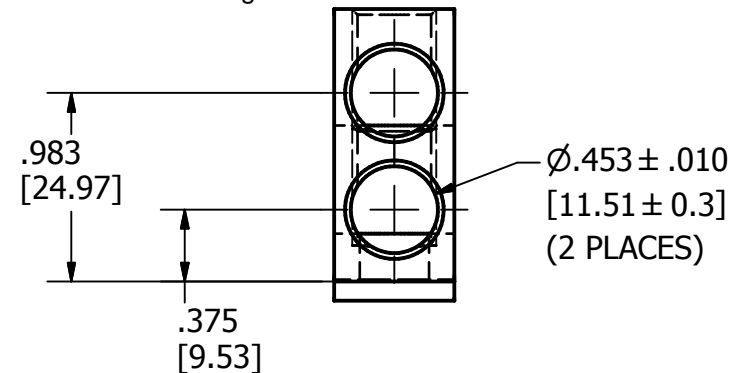
■ Drill, Enlarge, or Modify Mounting Holes

UL/CSA Files allow field modification to

- 1) Increase hole(s) dia. to 7/16 bolt.
- 2) Move location of mounting hole(s)
- 3) If buying blank lug, put custom hole(s) in.



This lug has been presented to Socomec and approved for use certain versions of the Socomec Fuserbloc. IHI understands that ABB has also tested these same lug for a similar M6 bolt mounting usage. When using this part on M6 bolt-on products please contact Socomec or ABB as appropriate to ascertain the available ratings that are supported by these respective OEM's products and check for any special features that are required to comply with the available ratings.



COPYRIGHT (PER LATEST REVISION DATE) OF INTERNATIONAL HYDRAULICS, INC. (IHI®). ALL RIGHTS RESERVED. THIS COMPLETE ENGINEERING DRAWING, SCHEMATICS, AND DESIGN ARE PROPRIETARY AND CONFIDENTIAL PROPERTY OF INTERNATIONAL HYDRAULICS, INC. DBA: IHI CONNECTORS® IN CLEVELAND, OHIO, AND MAY NOT BE DUPLICATED, USED FOR THE BASIS OF DESIGN OR MANUFACTURE WITHOUT PRIOR WRITTEN PERMISSION OF ITS OWNER. Contents contain a combination of registered trademark, copyright, or patent protections exclusively owned by IHI® which are not to be infringed upon.

Not for use where failure creates a hazard to human health or safety. All products are subject to this full disclaimer:
ihiconnectors.com/disclaimer.html

FOR FURTHER INFORMATION ON THE PROPER USE OF THIS PRODUCT IN SPECIFIC APPLICATIONS SEE
ihiconnectors.com/GuideToFlexFlexibleFineStrandedWireCableMechanicalLugsFAQ.html

ihiconnectors.com/Technical-Data-Installation.htm

INTERNATIONAL HYDRAULICS, INC.				
<small>THIS DRAWING AND DESIGN ARE THE PROPERTY OF INTERNATIONAL HYDRAULICS, INC., CLEVELAND, OHIO, AND MAY NOT BE DUPLICATED, USED FOR THE BASIS OF DESIGN OR MANUFACTURE WITHOUT THE WRITTEN PERMISSION OF INTERNATIONAL HYDRAULICS, INC., CLEVELAND, OHIO.</small>				
GENERAL TOLERANCES $\pm .015$ (± 0.038)				
TITLE: DUAL S 2/0-14 LUG 2S2-0-TP-STK2-26-40-HEX				
MATERIAL: 6061-T6 X1075TP-STK2	SIZE: A	DRAWN BY: TDS	DWG NO.: 2S2-0-TP-STK2-26-40-HEX (SALES)	REV: 1
FINISH: TIN PLATED	DATE: 10/6/24	IHI CONNECTORS		