

IHI UL/CSA Installation Guide to Drill or Enlarge Mounting Holes:
<https://lugsdirect.com/PDF Documents/IHI-MTG-HOLE-FIELD-MODS-UL&CSA-CERTIFICATIONS.pdf>

Cat. No. 2S2/0 Style No. 5

■ Drill, Enlarge, or Modify Mounting Holes

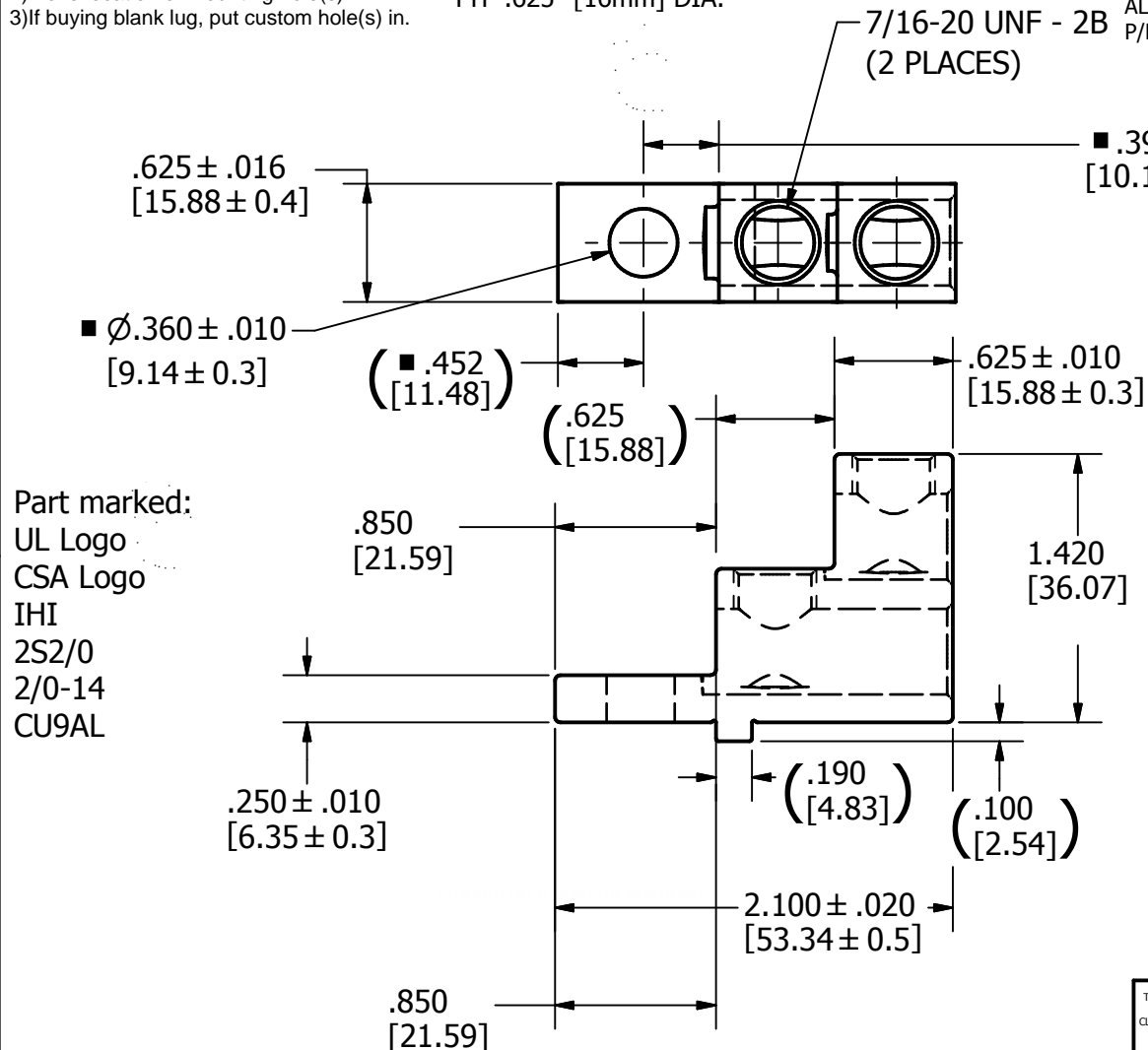
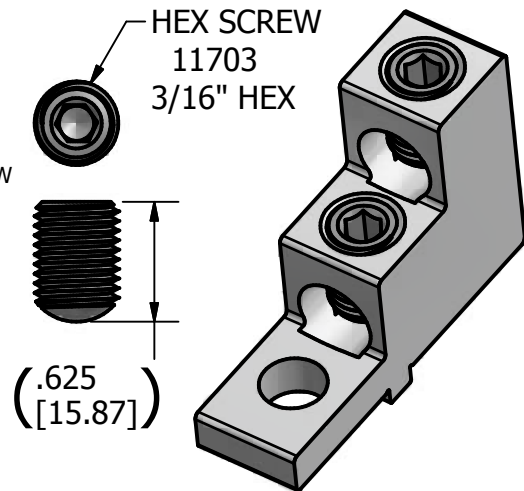
UL/CSA Files allow field modification to

- 1) Increase hole(s) dia. to 7/16 bolt.
- 2) Move location of mounting hole(s)
- 3) If buying blank lug, put custom hole(s) in.

FOR ABB SWITCH BUS MOUNT WIDE 5/16" BOLT OR M8 BOLT.

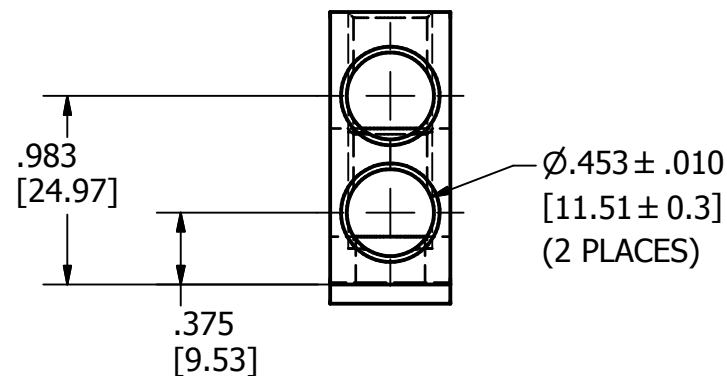
USE METRIC DIN 127 2A STANDARD M8 WASHER
 TYP .625" [16mm] DIA.

[ALT. SLOTTED SCREW
 P/N 14225
 ALT. METRIC HEX SCREW
 P/N 11703-M 5mm KEY]



IMPORTANT

The compatibility of these lugs on various ATS models by ABB must be verified by the respective OEM since integration does require confirmation that they are supplying the ATS with any needed modifications for creep barrier pole and ground separation for the lugs as mounted and have SCCR test data for that particular model and lug combination and any fastener and washer recommendations they have for the mounting security of the lug part number.



Part marked:
 UL Logo
 CSA Logo
 IHI
 2S2/0
 2/0-14
 CU9AL

NOT FOR USE WHERE FAILURE CREATES A HAZARD TO HUMAN HEALTH OR SAFETY.
 ALL PRODUCTS ARE SUBJECT TO THIS FULL DISCLAIMER:
<http://www.ihiconnectors.com/disclaimer.html>

FOR FURTHER INFORMATION ON THE PROPER USE OF THIS PRODUCT IN SPECIFIC APPLICATIONS SEE
<http://www.ihiconnectors.com/GuideToFlexFlexibleFineStrandedWireCableMechanicalLugsFAQ.html>

<http://www.ihiconnectors.com/Technical-Data-Installation.htm>

THIS DRAWING AND DESIGN ARE THE PROPERTY OF INTERNATIONAL HYDRAULICS, INC., CLEVELAND, OHIO, AND MAY NOT BE DUPLICATED, USED FOR THE BASIS OF DESIGN OR MANUFACTURE WITHOUT THE WRITTEN PERMISSION OF INTERNATIONAL HYDRAULICS, INC., CLEVELAND, OHIO.		INTERNATIONAL HYDRAULICS, INC.	
GENERAL TOLERANCES ±.015 (±0.038)		TITLE: DUAL S 2/0-14 LUG	
MATERIAL: 6061-T6 X1075TP-STK2		2S2-0-TP-STK2-36-40-HEX	
FINISH: TIN PLATED	SIZE: A	DRAWN BY: TDS	DWG NO.: 2S2-0-TP-STK2-36-40-HEX (SALES)
	DATE: 10/26/20		REV: 1
		IHI CONNECTORS	