

MARKING:  
IHI 2S2/0 CU9AL  
2/0-14 UL CSA

UL FILE: E129884  
CSA FILE: MC 200116



Pressure Terminal  
Connectors

NRTL Cat. No.  
**2S2/0**

2/0-14 CU9AL

Wire Size Copper (solid to semi-rigid stranded and metric mm <sup>2</sup> , ##)	All Torque in in.-lbs. For N-M divide by 8.85.			
	Rating °C	Wire Size FLEX Copper (#)	Wire Size aluminum	Torque (all drive means)
N/A	90	1/0-1	N/A	75
N/A		1-4	N/A	55
2/0-3		4-8	2/0-3	50
4-6		8-10	4-6	45
8		10-14	8	40
10-14		N/A	10-12	35

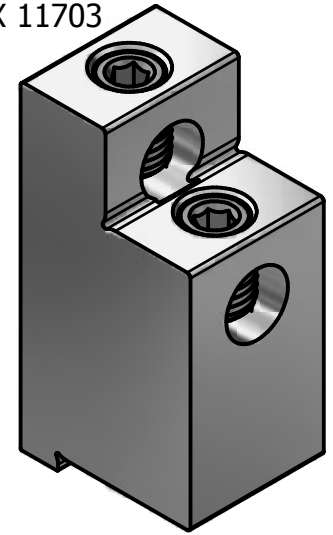
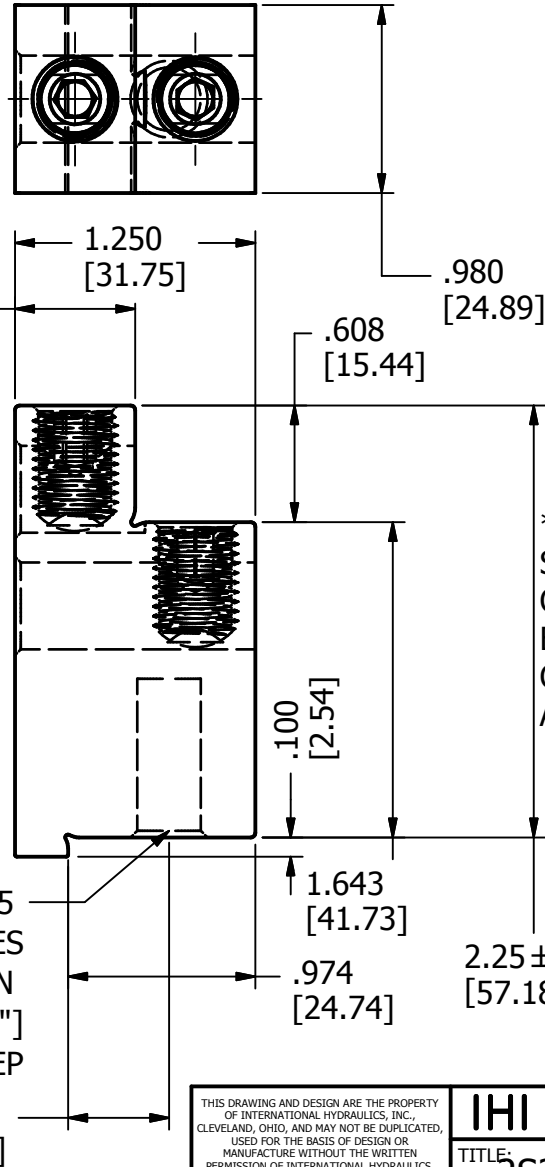
(#) FLEX - covers stranding classes within G, H, I/DLO,  
Metric class 5 and K/MTW (##) mm<sup>2</sup> sizes within  
AWG/kcmil ranges are included.  
PARALLELING: Rated for PAIRS of wires.

NOT FOR USE WHERE FAILURE CREATES A HAZARD TO HUMAN HEALTH OR SAFETY. ALL PRODUCTS ARE  
SUBJECT TO THIS FULL DISCLAIMER: <http://www.ihiconnectors.com/disclaimer.html>

FOR FURTHER INFORMATION ON THE PROPER USE OF THIS PRODUCT IN SPECIFIC APPLICATIONS SEE  
<http://www.ihiconnectors.com/GuideToFlexFlexibleFineStrandedWireCableMechanicalLugsFAQ.html>

<http://www.ihiconnectors.com/Technical-Data-Installation.htm>

INSTALLED FULLY SEATED 2 X 11703  
3/16" HEX SOCKET SCREWS



\* REQUIRES CUSTOMER  
SUPPLIED M10-1.5 X 20MM HEX  
CAP HEAD BOLT  
BUS AND WASHER  
COMPRESSED THICKNESS OF  
APPROX. 5MM [0.20"] TOTAL

\* M10x1.5  
BOLT GOES  
IN MIN  
15 MM [0.59"]  
DEEP

EXTRUSION  
X1075TP-STK3

THIS DRAWING AND DESIGN ARE THE PROPERTY OF INTERNATIONAL HYDRAULICS, INC., CLEVELAND, OHIO, AND MAY NOT BE DUPLICATED, USED FOR THE BASIS OF DESIGN OR MANUFACTURE WITHOUT THE WRITTEN PERMISSION OF INTERNATIONAL HYDRAULICS, INC., CLEVELAND, OHIO.		<b>IHI CONNECTORS</b> INTERNATIONAL HYDRAULICS, INC.	
<b>GENERAL TOLERANCES</b> ±.015 (±0,39)		TITLE: <b>2S2-0-TP-STK3-M10-53-HEX</b>	
MATERIAL: 6061-T6	SIZE: A	DRAWN BY: cridley	DWG NO.: 2S2-0-TP-STK3-M10-53-HEX (SALES)
FINISH: TIN PLATE	DATE: 4-1-2020	REV: 0	