

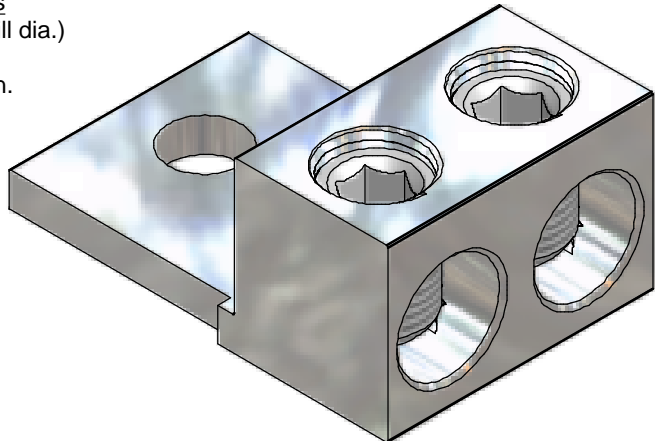
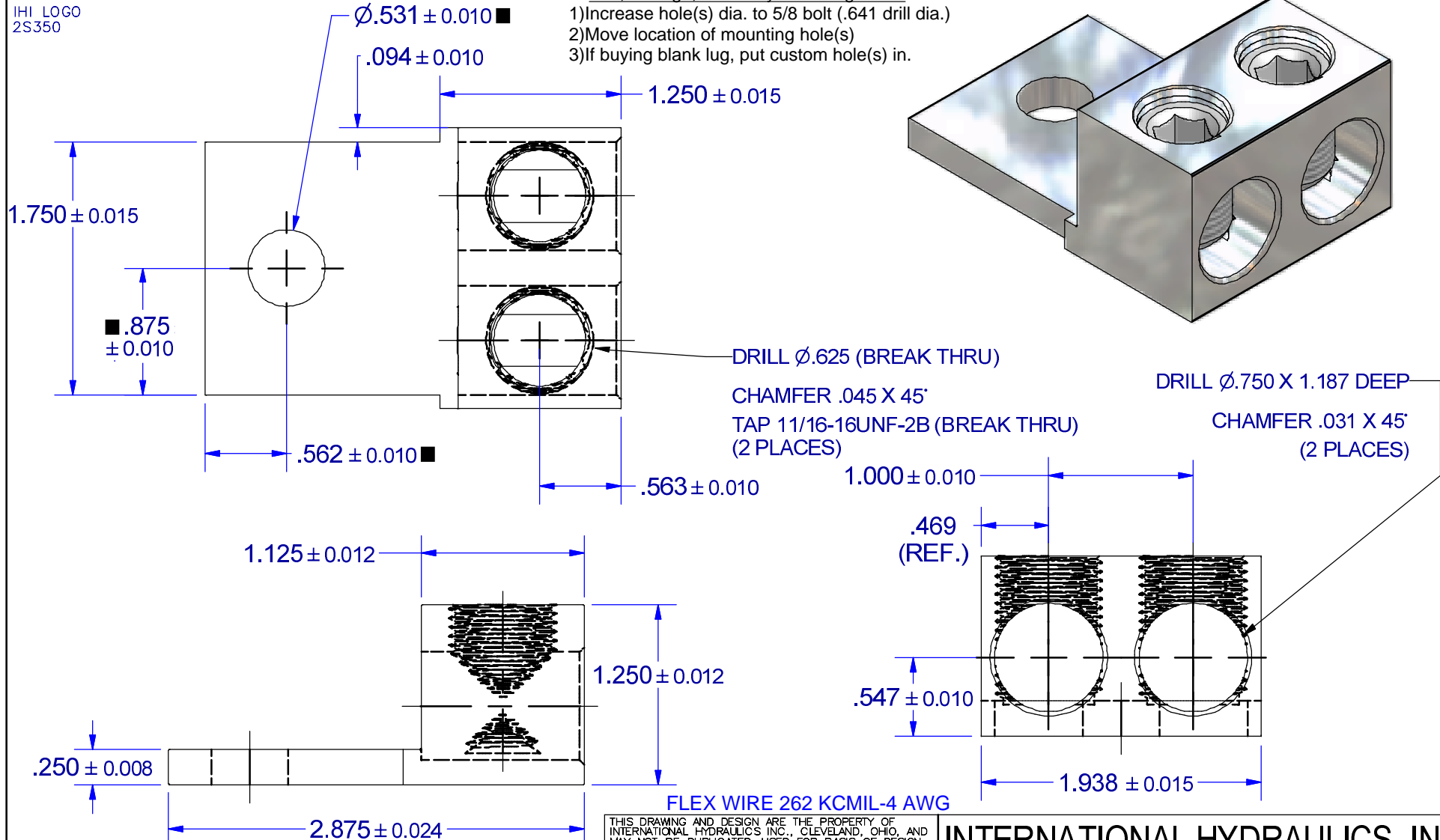
**PARTS MARKED**

350 KCMIL-6  
 CU9AL  
 UL LOGO  
 CSA LOGO  
 IHI LOGO  
 2S350

IHI UL/CSA Installation Guide to Drill or Enlarge Mounting Holes:  
<https://lugsdirect.com/PDF%20Documents/IHI-MTG-HOLE-FIELD-MODS-UL&CSA-CERTIFICATIONS.pdf>

REVISION HISTORY			
REV	DESCRIPTION	DATE	APPROVED
1	INITIAL RELEASE	05/29/2008	Tim Smith

Cat. No. 2S350 Style No. ALL  
**■ Drill, Enlarge, or Modify Mounting Holes**  
 1) Increase hole(s) dia. to 5/8 bolt (.641 drill dia.)  
 2) Move location of mounting hole(s)  
 3) If buying blank lug, put custom hole(s) in.



NOT FOR USE WHERE FAILURE CREATES A HAZARD TO HUMAN HEALTH OR SAFETY.  
 ALL PRODUCTS ARE SUBJECT TO THIS FULL DISCLAIMER:  
<http://www.ihconnectors.com/disclaimer.html>

FOR FURTHER INFORMATION ON THE PROPER USE OF THIS PRODUCT IN  
 SPECIFIC APPLICATIONS SEE  
<http://www.ihconnectors.com/GuideToFlexFlexibleFineStrandedWireCableMechanicalLugsFAQ.html>

<http://www.ihconnectors.com/Technical-Data-Installation.htm>

THIS DRAWING AND DESIGN ARE THE PROPERTY OF INTERNATIONAL HYDRAULICS INC., CLEVELAND, OHIO, AND MAY NOT BE DUPLICATED, USED FOR BASIS OF DESIGN OR MANUFACTURE WITHOUT THE WRITTEN PERMISSION OF INTERNATIONAL HYDRAULICS INC., CLEVELAND, OHIO.

UNLESS OTHERWISE SPECIFIED:  
 1. DIMENSIONS ARE IN INCHES.  
 2. REMOVE ALL BURRS AND SHARP EDGES.  
 3. TOLERANCE ON DIM'S  
 2 PLACES (.00) ± .010  
 3 PLACES (.000) ± .005  
 FRACTIONS ± 1/32  
 ANGLES (00) ± 0.5°  
 ANGLES (0.007) ± 0.05°

MATERIAL: AS NOTED  
 6061-T6 (X1020)

FINISH: AS NOTED  
 TIN PLATE

**INTERNATIONAL HYDRAULICS, INC.**

TITLE: 2S350-T  
 TRIMMED 2S350

SIZE: A	DRAWN BY: TDS	CHECKED BY: XX	REV: 1
DATE: 5/29/08	SCALE: NTS	DRAWING: 2S350-T	

THIS IS A CAD DRAWING, DO NOT MANUALLY REVISE