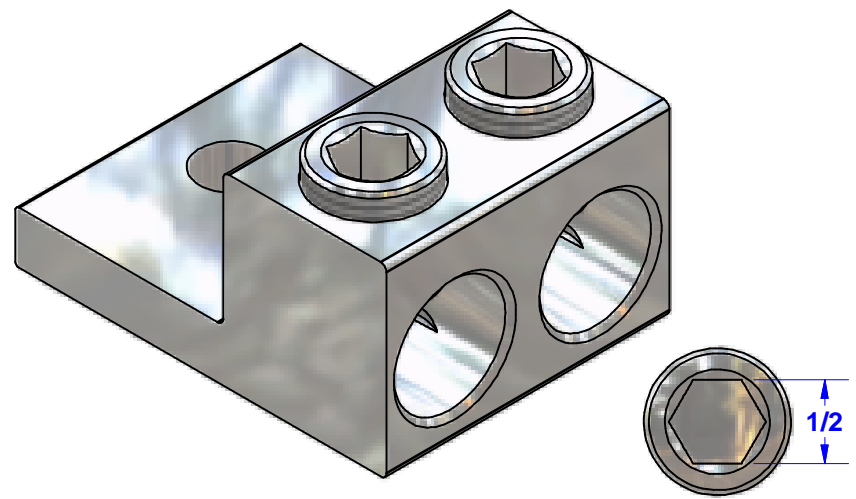
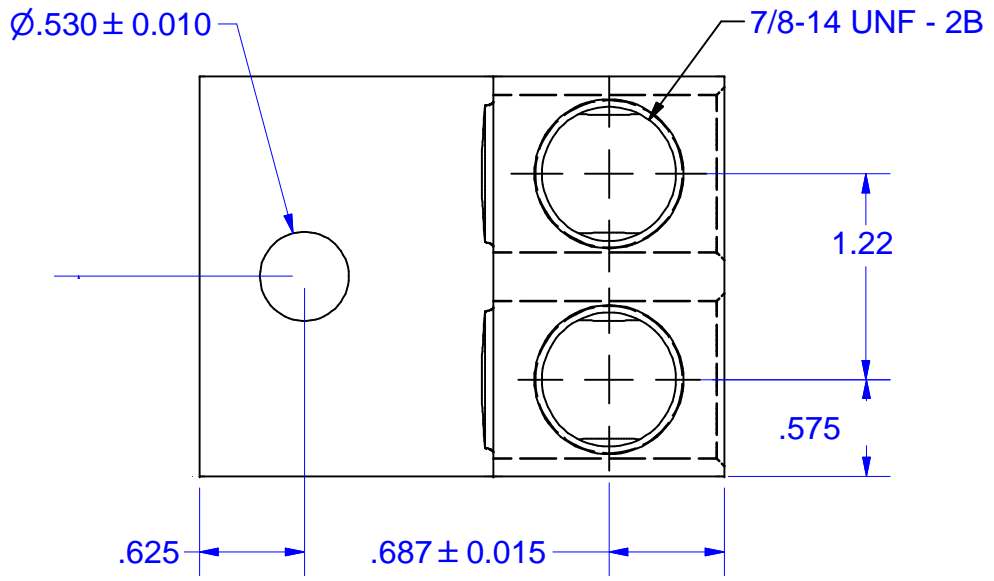
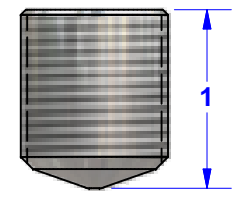
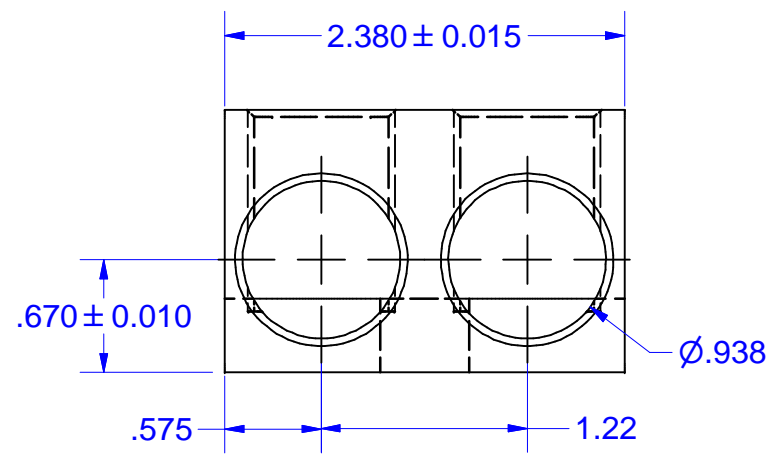
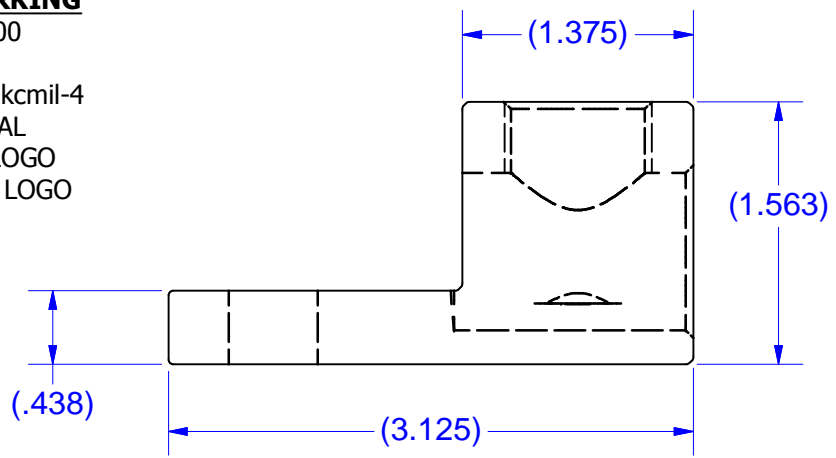


REVISION HISTORY			
REV	DESCRIPTION	DATE	BY



**MARKING**

2S600  
IHI  
600 kcmil-4  
CU9AL  
UL LOGO  
CSA LOGO



SCREW #14141

NOT FOR USE WHERE FAILURE CREATES A HAZARD TO HUMAN HEALTH OR SAFETY. ALL PRODUCTS ARE SUBJECT TO THIS FULL DISCLAIMER: <http://www.ihconnectors.com/disclaimer.html>

FOR FURTHER INFORMATION ON THE PROPER USE OF THIS PRODUCT IN SPECIFIC APPLICATIONS SEE <http://www.ihconnectors.com/GuideToFlexFlexibleFineStrandedWireCableMechanicalLugsFAQ.html>

<http://www.ihconnectors.com/Technical-Data-Installation.htm>

THIS DRAWING AND DESIGN ARE THE PROPERTY OF INTERNATIONAL HYDRAULICS, INC., CLEVELAND, OHIO, AND MAY NOT BE DUPLICATED, USED FOR THE BASIS OF DESIGN OR MANUFACTURE WITHOUT THE WRITTEN PERMISSION OF INTERNATIONAL HYDRAULICS, INC., CLEVELAND, OHIO.				INTERNATIONAL HYDRAULICS, INC.			
GENERAL TOLERANCES $\pm .015 (\pm 0.038)$				TITLE: <b>2S600 (SALES) CONNECTOR</b> <small>cdmr rev 1 3-21-2013</small>			
MATERIAL: <b>6061-T6 X2S600</b>		SIZE:	DRAWN BY: <b>TDS</b>	DWG NO.: 2S600-SALES		REV: R1	
FINISH: <b>TIN PLATE EMS</b>		DATE: <b>11/19/08</b>		THIS IS A CAD DRAWING, DO NOT MANUALLY REVISE			