

NOT FOR USE WHERE FAILURE CREATES A HAZARD TO HUMAN HEALTH OR SAFETY. ALL PRODUCTS ARE SUBJECT TO THIS FULL DISCLAIMER: <http://www.ihconnectors.com/disclaimer.html>

FOR FURTHER INFORMATION ON THE PROPER USE OF THIS PRODUCT IN SPECIFIC APPLICATIONS SEE <http://www.ihconnectors.com/GuideToFlexFlexibleFineStrandedWireCableMechanicalLugsFAQ.html>
<http://www.ihconnectors.com/Technical-Data-Installation.htm>

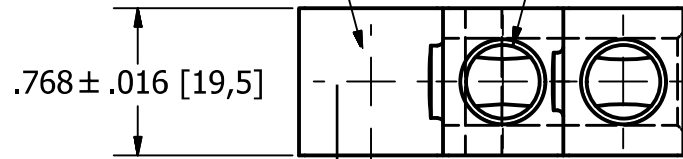
Full instructions in IHI UL/CSA Installation Guide to Drill or Enlarge Mounting Holes:
<https://lugsdirect.com/PDF%20Documents/IHI-MTG-HOLE-FIELD-MODS-UL&CSA-CERTIFICATIONS.pdf>

May be field modified.

***RANGE:**

**1/4 - 7/16 BOLT
[M6-M11 BOLT]**

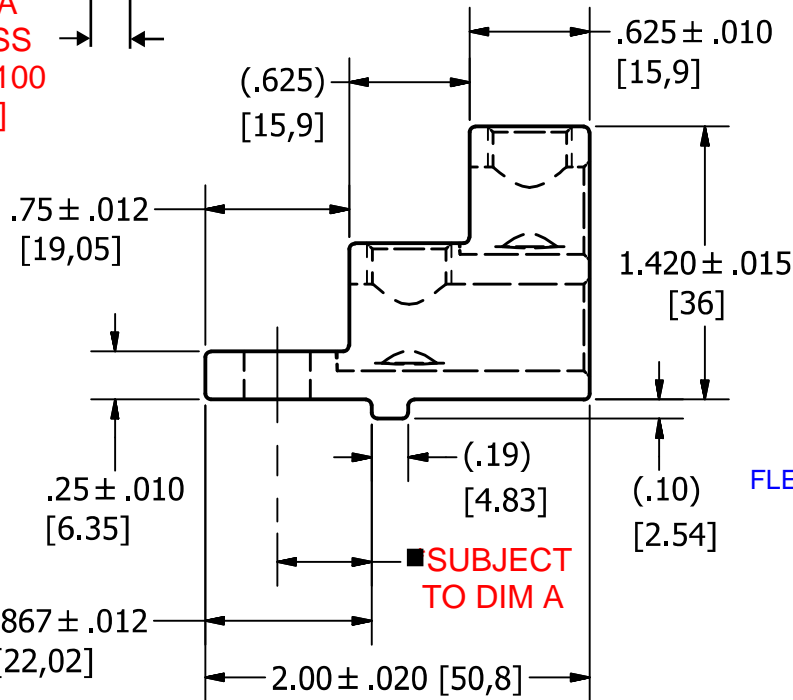
7/16-20 UNF - 2B
(2 PLACES)



Drilling and Modifying Mounting Holes

- UL/CSA Files allow field modification to
- 1) Increase hole(s) dia. to 7/16 bolt (.453 drill dia.)
 - 2) Move location of mounting hole(s)
 - 3) if buying blank lug, Put custom hole(s) in.

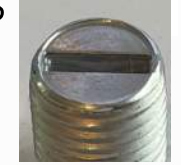
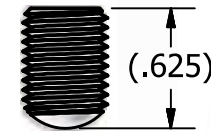
**DIM A
NO LESS
THAN .100
[2.54]**



SUBJECT TO DIM A

ALSO MAY BE SHIPPED WITH # 14225CF SCREW (CLOSED SLOT)

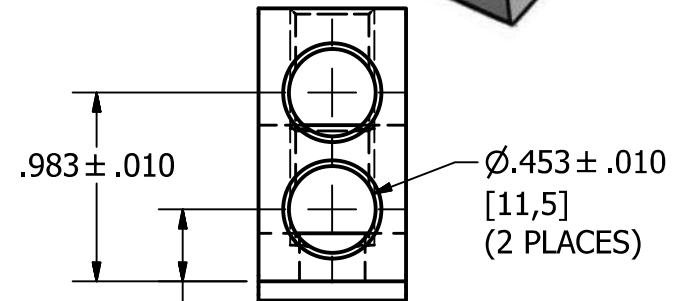
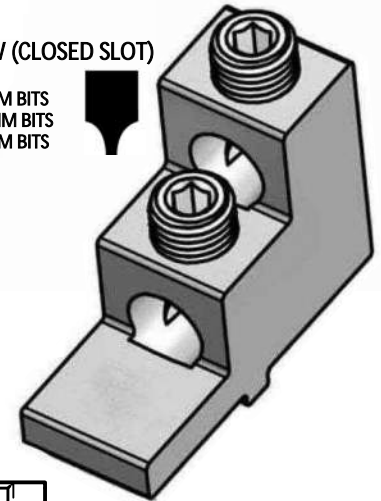
- RECOMMENDED FLAT SLOTTED DRIVER BITS
- 0-.75 IN-LBS CHAPMAN CM-96 8.3MM X 1.0MM BITS
 - 0-100 IN-LBS WIHA/WERA 8.0MM X 1.2MM BITS
 - 0-120 IN-LBS WIHA/WERA 8.0MM X 1.6MM BITS



14225CF SCREW

Cat No. 2S2/0 Style No. 5

1/4 BOLT - 7/16 BOLT (1 or 2)



FLEX WIRE 1/0-14 AWG .375 ± .010

Part marked:

UL Logo
CSA Logo
IHI
2S2/0
2/0-14
CU9AL

Shipped with regular slotted screw or TUFF SLOT™ closed slot which guides driver bit for rapid assembly (subject to availability).
 TUFF SLOT™ is a trademark of IHI Connectors®

THIS DRAWING AND DESIGN ARE THE PROPERTY OF INTERNATIONAL HYDRAULICS, INC., CLEVELAND, OHIO, AND MAY NOT BE DUPLICATED, USED FOR THE BASIS OF DESIGN OR MANUFACTURE WITHOUT THE WRITTEN PERMISSION OF INTERNATIONAL HYDRAULICS, INC., CLEVELAND, OHIO.		INTERNATIONAL HYDRAULICS, INC.		
GENERAL TOLERANCES ±.015 (±0,038)		TITLE: DUAL 2/0-14 LUG FOR SWITCH BUS MOUNT 20-25mm WIDE		
MATERIAL: T-6061	SIZE: A	DRAWN BY:	DWG NO.: 2S2/0-TP-STK-BLANK	REV: 0
FINISH:	DATE: 4/25/2018	IHI CONNECTORS		