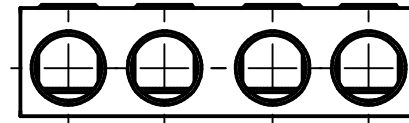
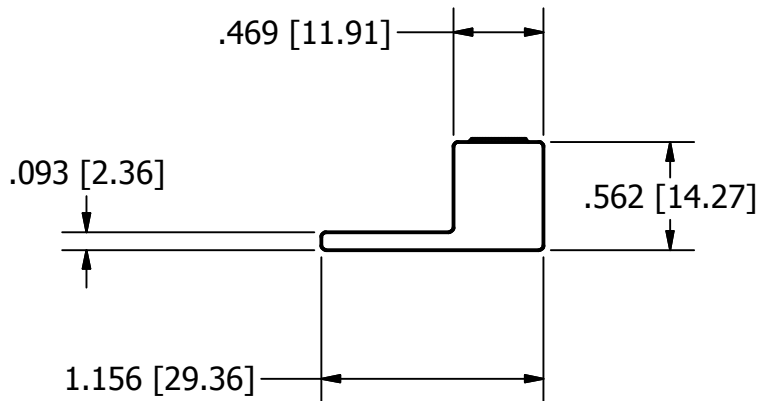
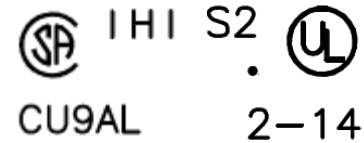


UL AND CSA MARKING



MOUNTING BOLTS: (2) EACH 5/16 OR M8  
 MAXIMUM CURRENT:  
 115A X 4 WIRES = 460A 75C  
 130A X 4 WIRES = 520A 90C  
 ZMVV LISTED FOR GROUNDING USE  
 SEE ALSO 600 VOLT STANDOFF KITS FOR POWER ISOLATION OR FLOATING GROUND

<small>THIS DRAWING AND DESIGN ARE THE PROPERTY OF INTERNATIONAL HYDRAULICS, INC., CLEVELAND, OHIO, AND MAY NOT BE DUPLICATED, USED FOR THE BASIS OF DESIGN OR MANUFACTURE WITHOUT THE WRITTEN PERMISSION OF INTERNATIONAL HYDRAULICS, INC., CLEVELAND, OHIO.</small>		<b>INTERNATIONAL HYDRAULICS, INC.</b>		
<b>GENERAL TOLERANCES</b> $\pm.015$ ( $\pm 0,39$ )		<b>TITLE:</b> <b>4 PORT POWER &amp; GROUND LUG</b> 2-14 X 4 WIRES		
<b>MATERIAL:</b> 6061-T6	<b>SIZE:</b> A	<b>DRAWN BY:</b> cridley	<b>DWG NO.:</b> 4S2-HEX(SALES)	<b>REV:</b> 0
<b>FINISH:</b> TIN PLATED	<b>DATE:</b> 12-19-2016	<b>IHI CONNECTORS</b>		