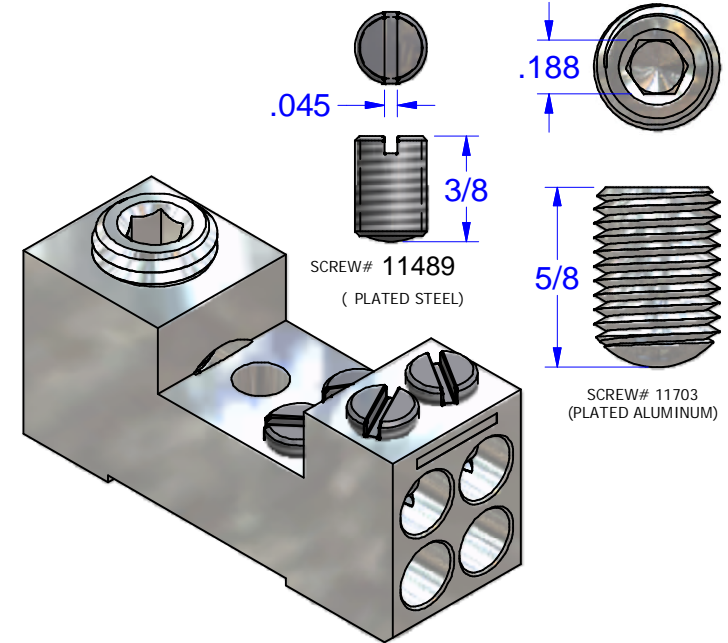
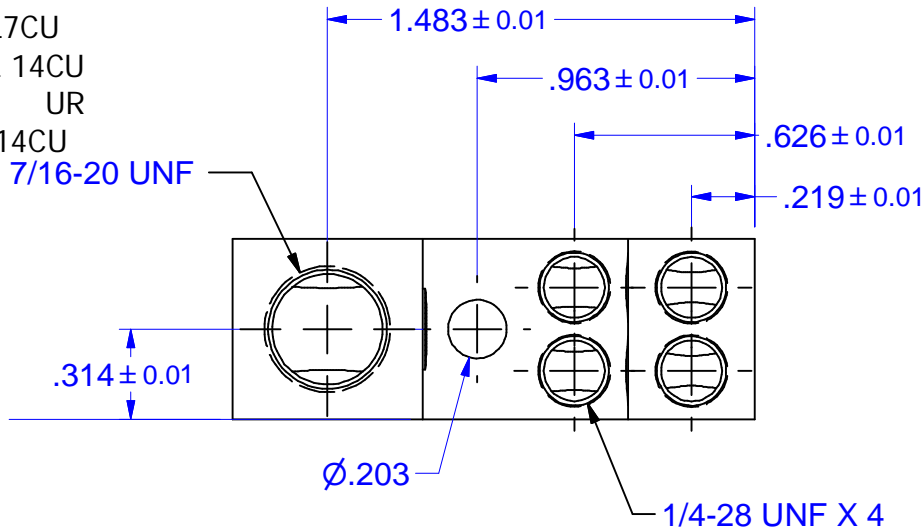


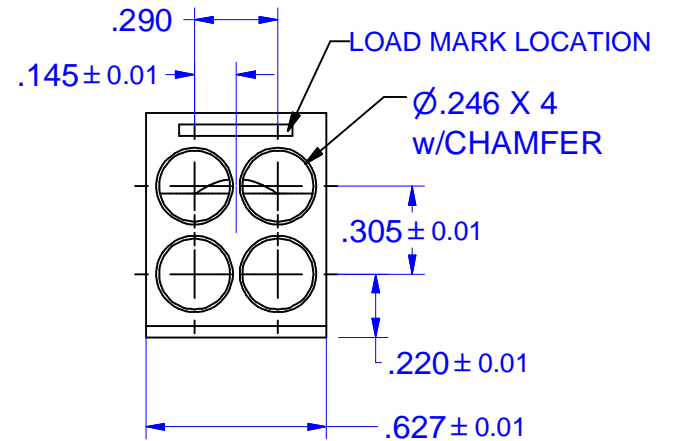
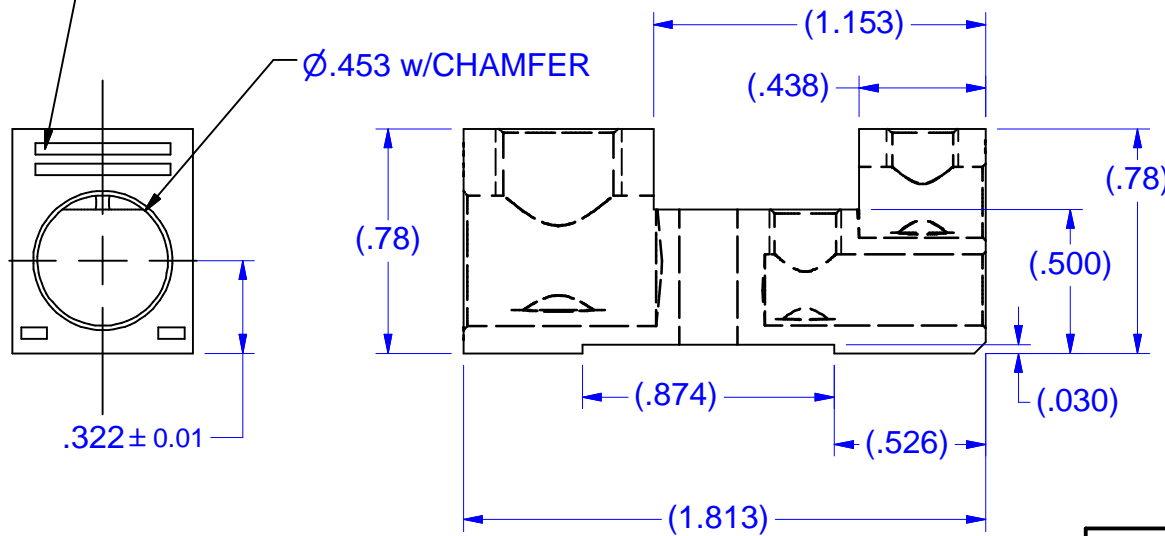
MARKING

LINE SIDE: 7006 AL7CU
 2/0-8AL 14CU
 IHI UR
 LOAD SIDE: 4-8AL-14CU

7/16-20 UNF



LINE MARK LOCATION



NOT FOR USE WHERE FAILURE CREATES A HAZARD TO HUMAN HEALTH OR SAFETY. ALL PRODUCTS ARE SUBJECT TO THIS FULL DISCLAIMER: <http://www.ihconnectors.com/disclaimer.html>

FOR FURTHER INFORMATION ON THE PROPER USE OF THIS PRODUCT IN SPECIFIC APPLICATIONS SEE <http://www.ihconnectors.com/Technical-Data-Installation.htm>

<small>THIS DRAWING AND DESIGN ARE THE PROPERTY OF INTERNATIONAL HYDRAULICS, INC., CLEVELAND, OHIO, AND MAY NOT BE DUPLICATED, USED FOR THE BASIS OF DESIGN OR MANUFACTURE WITHOUT THE WRITTEN PERMISSION OF INTERNATIONAL HYDRAULICS, INC., CLEVELAND, OHIO.</small>		INTERNATIONAL HYDRAULICS, INC.	
GENERAL TOLERANCES ±.015 (±0.038)		TITLE: 7006-IHI-SALES CONNECTOR	
MATERIAL: 6061-T6 ALUMINUM (X7006-P)	SIZE: TDS	DWG NO.: 7006-IHI (SALES)	REV: N/A
FINISH: TIN PLATE: EMS	DATE: 2/10/10	IHI CONNECTORS	