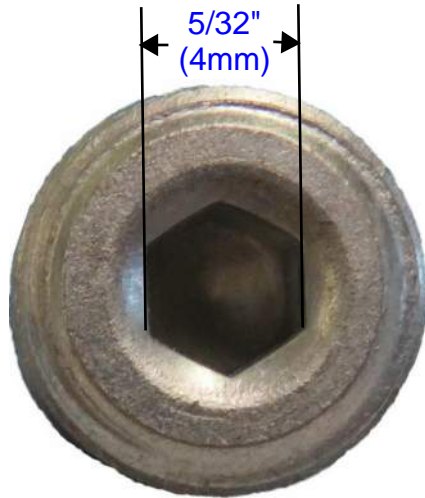


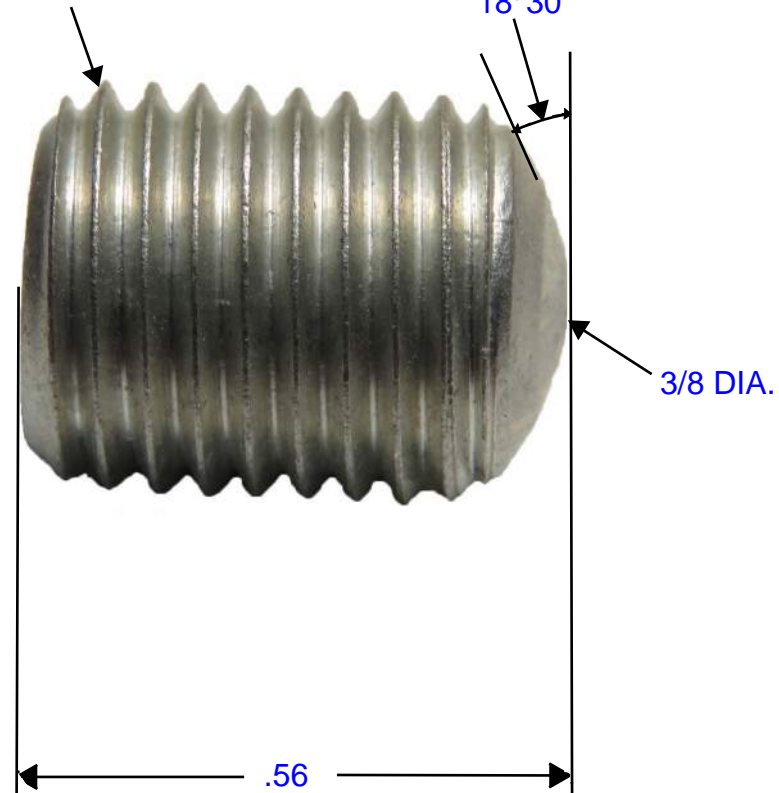
NOT FOR USE WHERE FAILURE CREATES A HAZARD TO HUMAN HEALTH OR SAFETY. ALL PRODUCTS ARE SUBJECT TO THIS FULL DISCLAIMER:  
<http://www.ihconnectors.com/disclaimer.html>

FOR FURTHER INFORMATION ON THE PROPER USE OF THIS PRODUCT IN SPECIFIC APPLICATIONS SEE:  
<https://lugsdirect.com/AluminumSetScrews/aluminum-set-screws-FAQ.html>



7-16-20 UNF 2A

18° 30'



THREAD	7/16-20 UNF 2A
MATERIAL	2024 T4 ALUMINUM
PLATING	TIN
WAX	YES
WIEGHT (LBS)	.0058
MAX WORKING TORQUE	110 IN. LBS
RoHS	YES (10/10)
REACH	YES
LEAD FREE	YES
CONFLICT FREE MATERIALS	YES
ENVIRONMENT	DRY LOCATIONS
COUNTRY OF ORIGIN	USA

ADVANCEMENT INTERNATIONAL LTD

TITLE	7/16-20 X .56 HEX SET SCREW
PART NUMBER	14236

DESCRIPTION  
 ALUMINUM SET SCREW, OVAL POINT,  
 HEX SOCKET

GENERAL TOLERANCES: ±.015 DATE: 9/19/2016 REV.