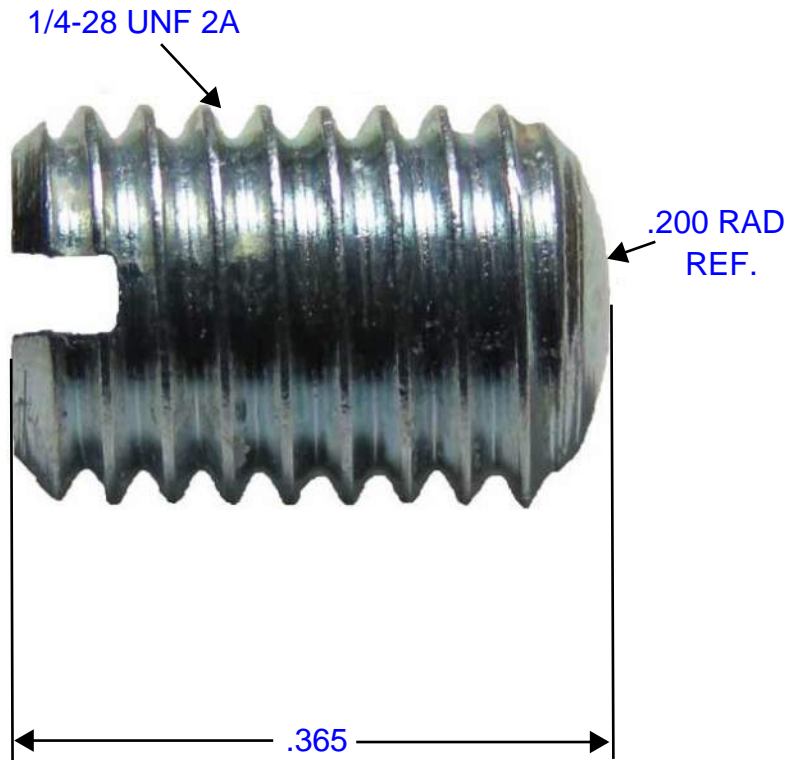
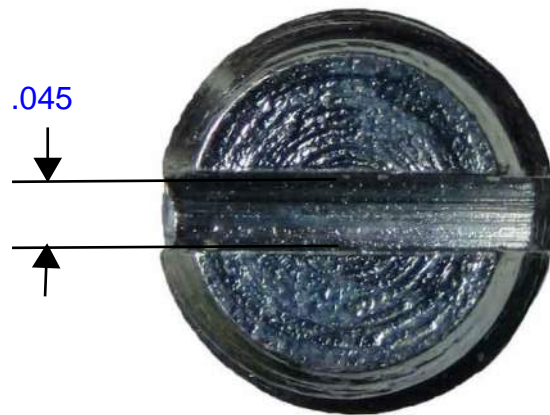


NOT FOR USE WHERE FAILURE CREATES A HAZARD TO HUMAN HEALTH OR SAFETY.
 ALL PRODUCTS ARE SUBJECT TO THIS FULL DISCLAIMER:
<https://ihiconnectors.com/disclaimer.html>



SLOT TO WITHSTAND 35 IN-LB MAXIMUM TORQUE

ADVANCEMENT INTERNATIONAL LTD

THREAD	1/4-28 UNF 2A
MATERIAL	1215 STEEL
PLATING	ZINC/Cr
WAX	YES
WEIGHT (oz)	.0580
RoHS	YES (10/10)
REACH	YES
LEAD FREE	YES
CONFLICT FREE MATERIALS	YES
ENVIRONMENT	DRY LOCATIONS
COUNTRY OF ORIGIN	USA

TITLE	1/4-28 X 3/8 SET SCREW
PART NUMBER	15717

DESCRIPTION	STEEL SET SCREW, OVAL POINT, SLOTTED SET SCREW
-------------	--

GENERAL TOLERANCES: ±.01 DATE: 9/23/2020 REV. 0