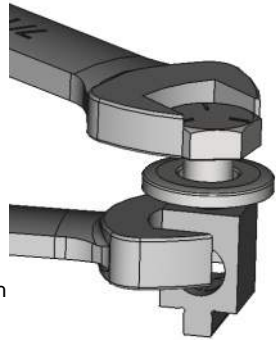


Ring Lug Mount (RLM)

Screw Tightening Torques

All torques in inch-lbs. (Divide by 8.85 for N-m)

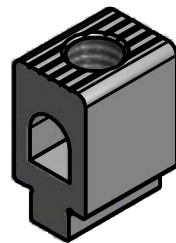
When Using	THT Mounts		SMT Mount	Lug body Wrench Size
	Min	Max		
-RLM			##	11/32" (9mm)
B10-PCB	20	40**	##	



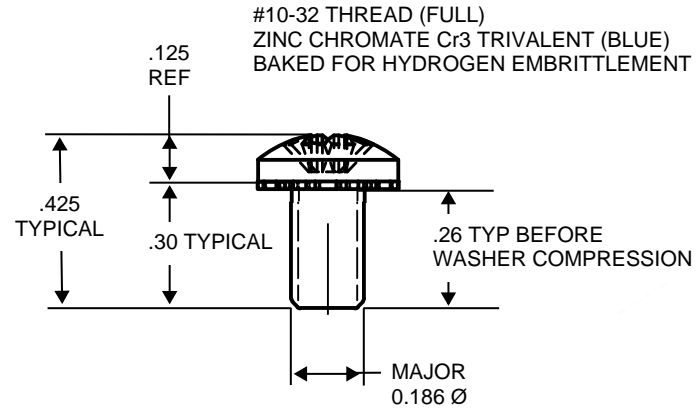
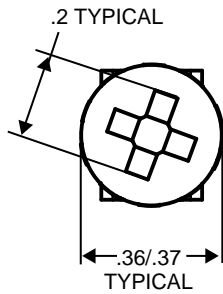
(**) Use of an open ended wrench on the lug to counter the applied torque is recommended in case the soldered mount to PCB is compromised by excessive torque applied through to the soldered PCB joint.

(##) All SMT mounts require that the torque applied should be established by purchaser using data on the strength of the SMT joint in the worst case.

In addition, use of an open ended wrench on the SMT mounted lug to counter the applied torque is recommended in case the soldered mount to PCB is compromised by excessive torque applied through to the soldered PCB joint.



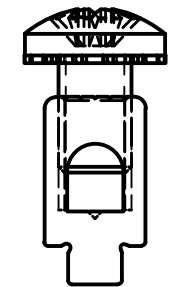
ASSEMBLY	PN	SCREW MATERIAL	TYPE	RoHS
B10-PCB-RLM	PPHW010F-01	STEEL, ZINC PLATED	PHILLIPS	YES 10/10



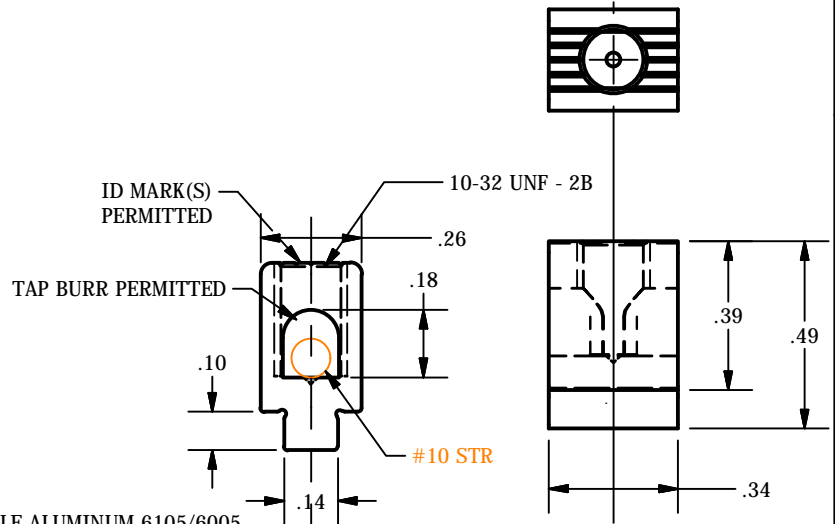
#10-32 THREAD (FULL)
ZINC CHROMATE Cr3 TRIVALENT (BLUE)
BAKED FOR HYDROGEN EMBRITTLEMENT

DIMENSIONS ARE NOMINAL/REF - NOT FOR MFG.

COPYRIGHT IHI 2009-2015 ALL RIGHTS RESERVED



B10-PCB-RLM-KIT



* BODY: HIGH TENSILE ALUMINUM 6105/6005
PER IHI SPECS

SPECS:

#10-14(16) CU STRANDED & SOLID ONLY. FERRULES ARE RECOMMENDED FOR FINE STRANDED WIRES AND SMALLER WIRES. TIN PLATED BODY FOR SOLDERABILITY. * WAVE SOLDERING OR SOLDER PASTE / SMT. NOT UL /CSA RATED BUT CAPABLE OF BEING LISTED AS PART OF A UL RATED ASSEMBLY WITH A HEAT RISE TEST AND PULLOUT TESTS, ETC., TO UL486B OR UL486E WHEN USING IN SMT MODE (LAYING ON THE SIDE) IT IS RECOMMENDED TO USE THE HEX SOCKET SCREW. IF THE HEADED SCREW IS USED THEN CUT OUT THE PCB IN PROXIMITY TO THE HEAD TO GUARD AGAINST INCIDENTAL CONTACT WITH PCB FOIL OR MECHANICAL FOULING WHICH COULD STRESS THE SMT JOINT.

NOT FOR USE WHERE FAILURE CREATES A HAZARD TO HUMAN HEALTH OR SAFETY. ALL PRODUCTS ARE SUBJECT TO THIS FULL DISCLAIMER: <http://www.ihiconnectors.com/disclaimer.html>

FOR FURTHER INFORMATION ON THE PROPER USE OF THIS PRODUCT IN SPECIFIC APPLICATIONS SEE <http://www.ihiconnectors.com/GuideToFlexFlexibleFineStrandedWireCableMechanicalLugsFAQ.html> <http://ihiconnectors.com/Precautions-when-using-SMT.pdf> http://www.ihiconnectors.com/FAQ_SMT_SMD_High_CurrentPCB_Terminal_LugsSolderCreep.htm http://www.ihiconnectors.com/High_Amp_Wide_Trace_PCB_Wire_Connection.html <http://www.ihiconnectors.com/Technical-Data-Installation.htm>

THIS DRAWING AND DESIGN ARE THE PROPERTY OF INTERNATIONAL HYDRAULICS, INC., CLEVELAND, OHIO, AND MAY NOT BE DUPLICATED, USED FOR THE BASIS OF DESIGN OR MANUFACTURE WITHOUT THE WRITTEN PERMISSION OF INTERNATIONAL HYDRAULICS, INC., CLEVELAND, OHIO.					INTERNATIONAL HYDRAULICS, INC.				
GENERAL TOLERANCES -.015 (-0.038)					TITLE: CONNECTOR CAT NO B10-PCB-XX				
MATERIAL:		SIZE:	DRAWN BY:		DWG NO.:		REV:		
		A	FJBarcia		B10-PCB-RLM		2		
FINISH:		DATE:			IHI CONNECTORS				
		12/12/2014							