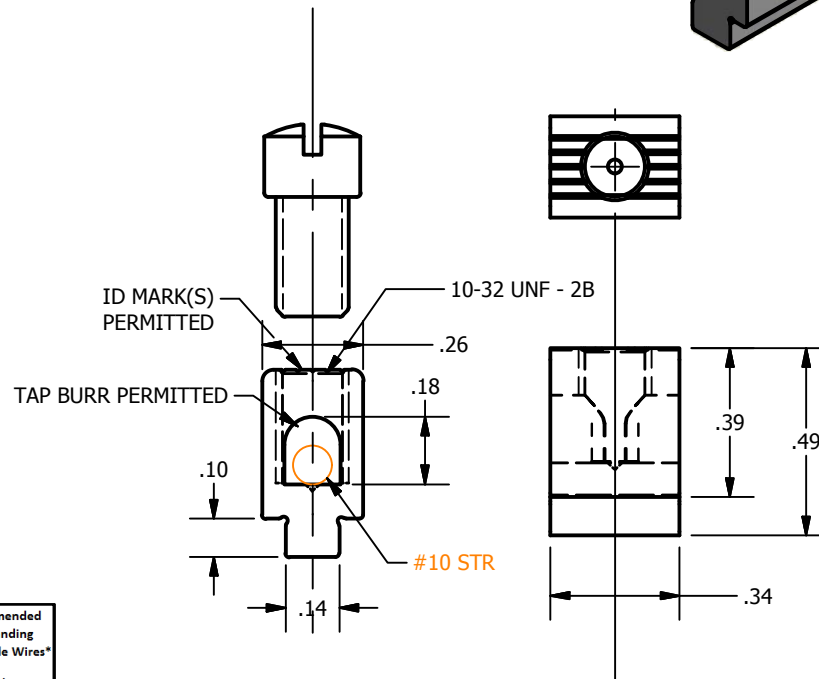
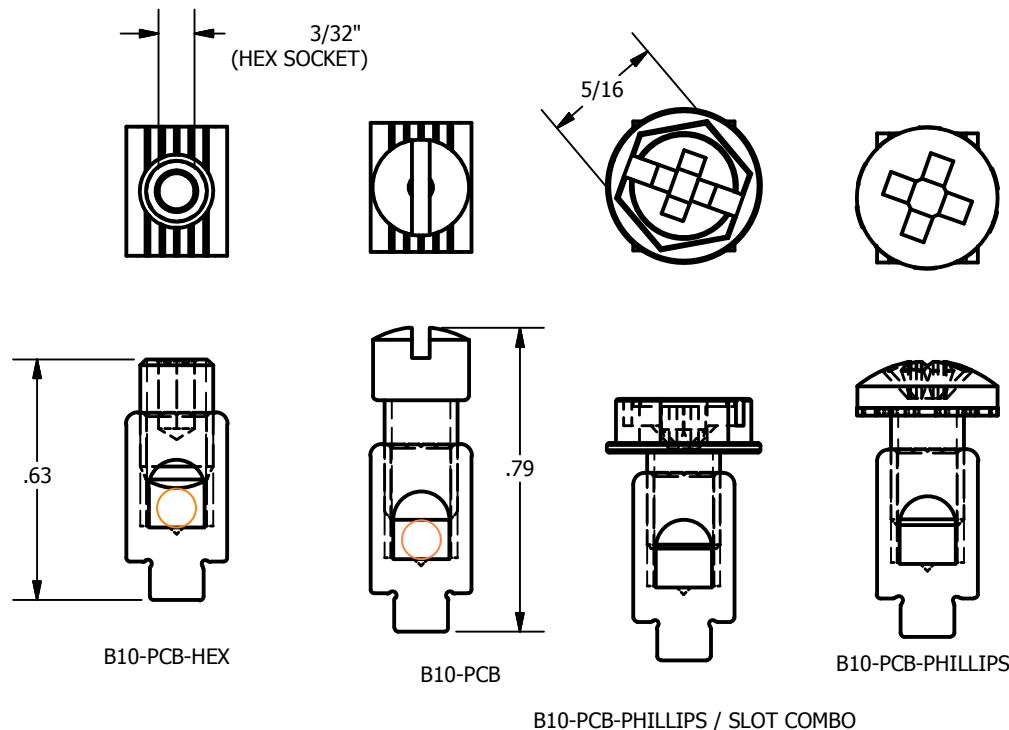
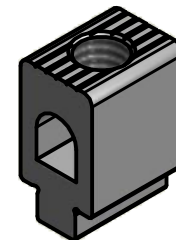


ASSEMBLY	PN	SCREW MATERIAL	TYPE	RoHS
B10-PCB	14288	STEEL, ZINC PLATED	FILISTER HEAD	YES 6/6
B10-PCB-HEX	15715	STEEL, ZINC PLATED	HEX SKT HEAD	YES 6/6
B10-PCB-RLM	PPHW010F-01	STEEL, ZINC PLATED	PHILLIPS	YES 6/6
B10-PCB-RLM-G	PSHH010F-01	STEEL, ZINC PLATED GREEN	PHILLIPS / SLOT COMBO	YES 6/6

REVISION HISTORY			
REV	DESCRIPTION	DATE	AUTHOR
1	REDRAWN IN INVENTOR	12/12/2014	FJB
2	ADD PHILLIPS AND PHILLIPS COMBO TO SCREW SELECTION	10/21/2015	TDS

DIMENSIONS ARE NOMINAL/REF - NOT FOR MFG.  
 COPYRIGHT IHI 2009-2015 ALL RIGHTS RESERVED



**SPECS:**

#10-14(16) CU STRANDED & SOLID ONLY. FERRULES ARE RECOMMENDED FOR FINE STRANDED WIRES AND SMALLER WIRES. TIN PLATED BODY FOR SOLDERABILITY. \* WAVE SOLDERING OR SOLDER PASTE / SMT. NOT UL /CSA RATED BUT CAPABLE OF BEING LISTED AS PART OF A UL RATED ASSEMBLY WITH A HEAT RISE TEST AND PULLOUT TESTS, ETC., TO UL486B OR UL486E WHEN USING IN SMT MODE (LAYING ON THE SIDE) IT IS RECOMMENDED TO USE THE HEX SOCKET SCREW. IF THE HEADED SCREW IS USED THEN CUT OUT THE PCB IN PROXIMITY TO THE HEAD TO GUARD AGAINST INCIDENTAL CONTACT WITH PCB FOIL OR MECHANICAL FOULING WHICH COULD STRESS THE SMT JOINT.

AWG	mm <sup>2</sup>	in-lb	N-M
10	-	20	2.26
-	4		
12	-		
-	2.5		
14	-	-	-

\*For parts with No Screw (i.e. XXX-PCB-NS) Recommended Torque is User Controlled. Wire binding screw torque not applicable to ring lug clamping screws. Suitable torques for flex wire may be different than listed.

\* BODY: HIGH TENSILE ALUMINUM 6105/6005 PER IHI SPECS

NOT FOR USE WHERE FAILURE CREATES A HAZARD TO HUMAN HEALTH OR SAFETY. ALL PRODUCTS ARE SUBJECT TO THIS FULL DISCLAIMER: <http://www.ihconnectors.com/disclaimer.html>

FOR FURTHER INFORMATION ON THE PROPER USE OF THIS PRODUCT IN SPECIFIC APPLICATIONS SEE <http://www.ihconnectors.com/GuideToFlexFlexibleFineStrandedWireCableMechanicalLugsFAQ.html>  
<http://ihconnectors.com/Precautions-when-using-SMT.pdf>  
[http://www.ihconnectors.com/FAQ\\_SMT\\_SMD\\_High\\_CurrentPCB\\_Terminal\\_LugsSolderCreep.htm](http://www.ihconnectors.com/FAQ_SMT_SMD_High_CurrentPCB_Terminal_LugsSolderCreep.htm)  
[http://www.ihconnectors.com/High\\_Amp\\_Wide\\_Trace\\_PCB\\_Wire\\_Connection.html](http://www.ihconnectors.com/High_Amp_Wide_Trace_PCB_Wire_Connection.html)  
<http://www.ihconnectors.com/Technical-Data-Installation.htm>

THIS DRAWING AND DESIGN ARE THE PROPERTY OF INTERNATIONAL HYDRAULICS, INC., CLEVELAND, OHIO, AND MAY NOT BE DUPLICATED, USED FOR THE BASIS OF DESIGN OR MANUFACTURE WITHOUT THE WRITTEN PERMISSION OF INTERNATIONAL HYDRAULICS, INC., CLEVELAND, OHIO.		INTERNATIONAL HYDRAULICS, INC.	
GENERAL TOLERANCES ±.015 (±0,038)		TITLE: CONNECTOR CAT NO B10-PCB-XX	
MATERIAL:	SIZE: A	DRAWN BY: FJBarcia	DWG NO.:
FINISH:	DATE: 12/12/2014	B10-PCB-XX	REV: 2
<b>IHI CONNECTORS</b>			