

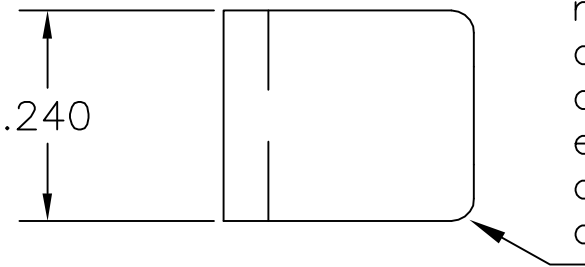
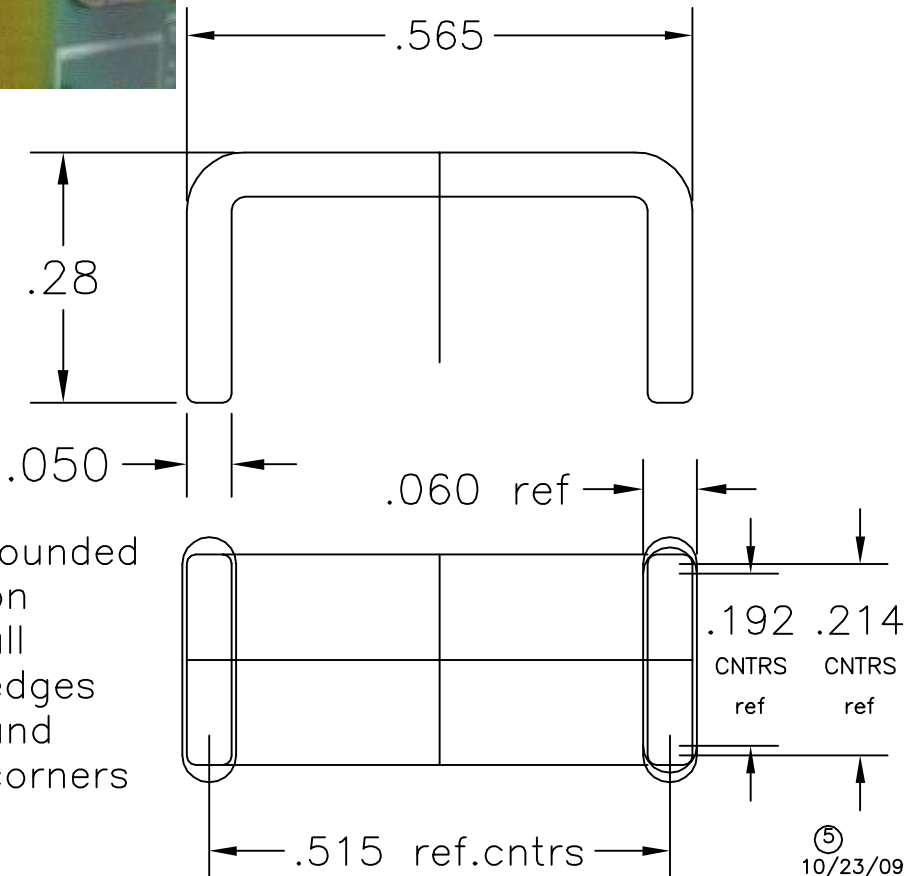
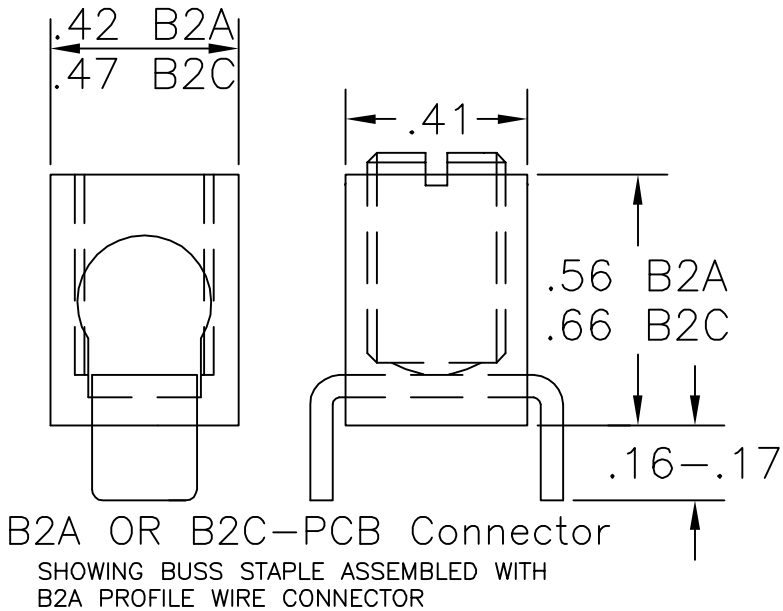
UNLESS OTHERWISE SPECIFIED, DIMENSIONS ARE IN INCHES. REMOVE ALL BURRS AND SHARP EDGES.

TOLERANCES: 2 PLACE (.XX) ±.010 FRACTION ±1/64
 3 PLACE (.XXX) ±.005 ANGLES ±1/2 DEGREE

THIS DRAWING AND DESIGN ARE THE PROPERTY OF INTERNATIONAL HYDRAULICS, INC., MENTOR, OHIO. IT MAY NOT BE DUPLICATED OR USED FOR THE BASIS OF DESIGN OR MANUFACTURE, WITHOUT THE WRITTEN PERMISSION OF INTERNATIONAL HYDRAULICS INC.

REVISIONS		BY	DATE
NR.	DESCRIPTION		

SOME EXAMPLES OF TYPICAL SOLDER PADS



Board requires a routed slot .06 wide x .192/.214 cntrs. long on .515 centers. Hole size in board can be varied to control fit from drop-in to force fit on corners. Some variation in spacing of "legs" on staple may be expected. Final insertion and retention force preferences are the responsibility of the PCB designer.

⑤ 10/23/09
 ④ 5/18/00

NOT FOR USE WHERE FAILURE CREATES A HAZARD TO HUMAN HEALTH OR SAFETY.
 ALL PRODUCTS ARE SUBJECT TO THIS FULL DISCLAIMER: <http://www.ihconnectors.com/disclaimer.html>
 FOR FURTHER INFORMATION ON THE PROPER USE OF THIS PRODUCT IN SPECIFIC APPLICATIONS SEE <http://www.ihconnectors.com/GuideToFlexFibletineStrandedWireCableMechanicalLugsFAQ.html>
http://www.ihconnectors.com/High_Amp_Wide_Trace_PCB_Wire_Connection.html
<http://www.ihconnectors.com/Technical-Data-Installation.htm>

International Hydraulics 7700 ST. CLAIR AVE., MENTOR, OH	DWG BY: CDMR	TITLE Connector Buss Staple	REV# 5
	DATE: 3/13/00	MATERIAL Copper	FINISH Tin Solderable (Spec.EMS1001)
			DWG# 14257cat