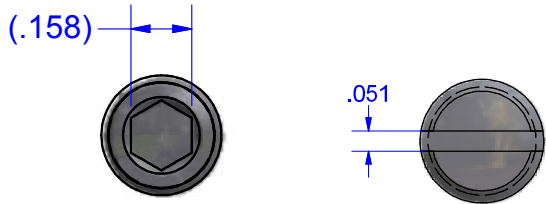


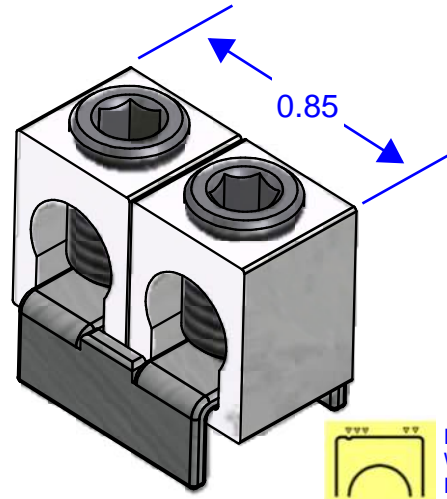
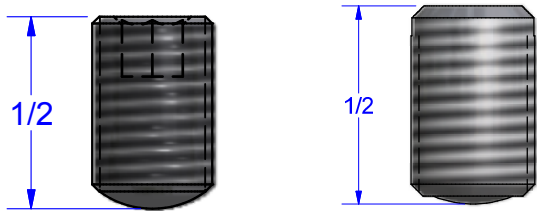
NOT FOR USE WHERE FAILURE CREATES A HAZARD TO HUMAN HEALTH OR SAFETY. ALL PRODUCTS ARE SUBJECT TO THIS FULL DISCLAIMER: <http://www.ihconnectors.com/disclaimer.html>

FOR FURTHER INFORMATION ON THE PROPER USE OF THIS PRODUCT IN SPECIFIC APPLICATIONS SEE http://www.ihconnectors.com/High_Amp_Wide_Trace_PCB_Wire_Connection.html
<http://www.ihconnectors.com/Technical-Data-Installation.htm>
<https://lugsdirect.com/PDF Documents/5-16-SLOTTEDSCREW-BIT-RECOMMENDED-SPECS-IHCONNECTORS.pdf>

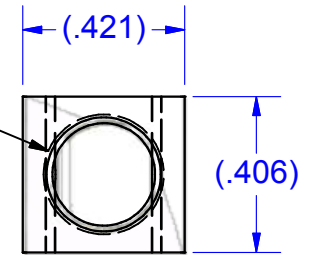
ALL SHOWN AT 2X ACTUAL SIZE



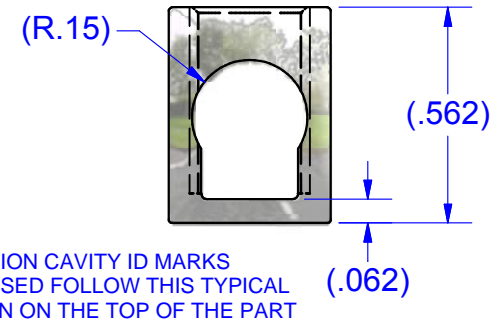
SCREW #12786-HEX STEEL (ZINC PLATED) SCREW # 12786/15718/15720 STEEL (ZINC PLATED)



1/16-24 UNF - 2B



CONNECTOR #B2A ALUMINUM (TIN PLATED)

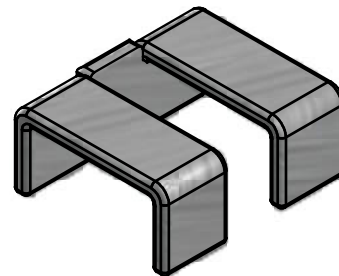
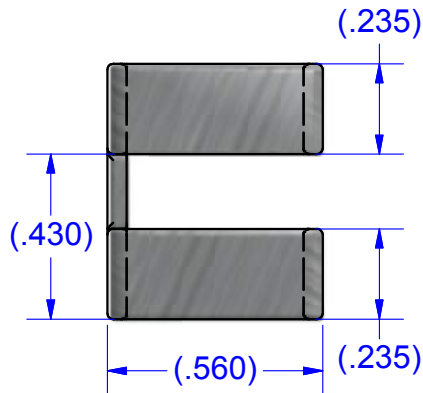


EXTRUSION CAVITY ID MARKS WHEN USED FOLLOW THIS TYPICAL PATTERN ON THE TOP OF THE PART

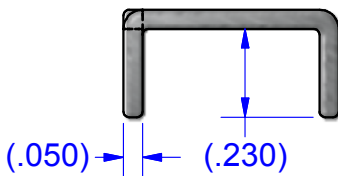
PARTS MARKED

- B2
- IHI LOGO
- CSA LOGO
- UL RECOGNITION LOGO
- 2-14CU7
- 2-8AL7

Schematic drawing covers:
 B2A-2PCB
 B2A-2PCB-HEX



DUAL LUG STAPLE #PT2567 COPPER (TIN SOLDERABLE)



REVISION HISTORY			
REV	DESCRIPTION	DATE	APPROVED
1	INITIAL RELEASE	10/8/2012	TDS
<small>THIS DRAWING AND DESIGN ARE THE PROPERTY OF INTERNATIONAL HYDRAULICS, INC., CLEVELAND, OHIO, AND MAY NOT BE DUPLICATED, USED FOR THE BASIS OF DESIGN OR MANUFACTURE WITHOUT THE WRITTEN PERMISSION OF INTERNATIONAL HYDRAULICS, INC., CLEVELAND, OHIO.</small>		INTERNATIONAL HYDRAULICS, INC.	
GENERAL TOLERANCES ±.015 (±0.038)		TITLE: Connectors+Buss for PCB Mtg. ASSEMBLED CONNECTOR	
MATERIAL: SEE ABOVE	SIZE:	DRAWN BY: TDS	DWG NO.: SEE ABOVE
FINISH:	DATE: 10/8/12 11/10/14	IHI CONNECTORS	
			REV: 2