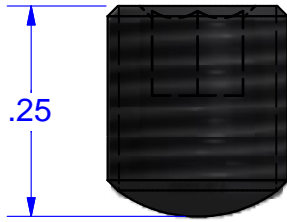
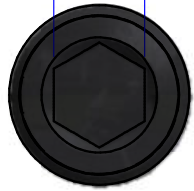
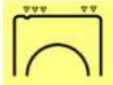


4mm 5/32

LOW PROFILE SCREW



SCREW HEX25
STEEL (BLACK OXIDE)



EXTRUSION CAVITY ID MARKS
WHEN USED FOLLOW THIS TYPICAL
PATTERN ON THE TOP OF THE PART

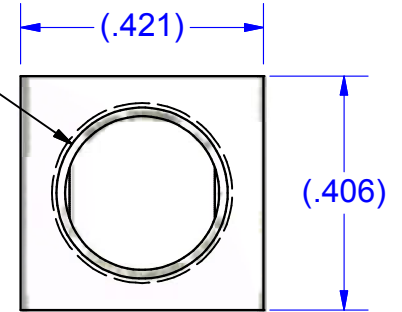
NOT FOR USE WHERE FAILURE CREATES A HAZARD TO HUMAN HEALTH OR SAFETY. ALL PRODUCTS ARE SUBJECT TO THIS FULL DISCLAIMER: <http://www.ihconnectors.com/disclaimer.html>

FOR FURTHER INFORMATION ON THE PROPER USE OF THIS PRODUCT IN SPECIFIC APPLICATIONS SEE <http://www.ihconnectors.com/GuideToFlexFlexibleFineStrandedWireCableMechanicalLugsFAQ.html>

http://www.ihconnectors.com/High_Amp_Wide_Trace_PCB_Wire_Connection.html
<http://www.ihconnectors.com/Technical-Data-Installation.htm>

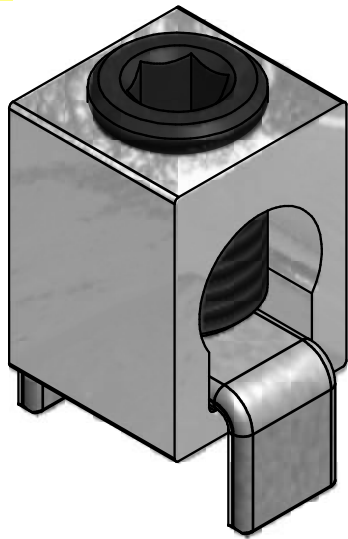
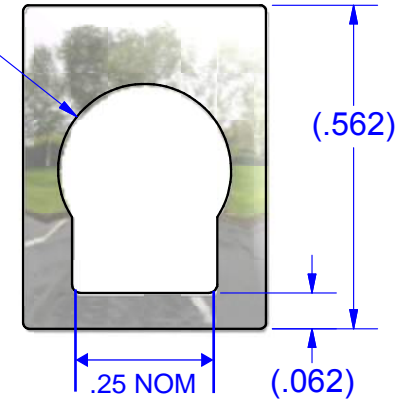
CUSTOMER SUPPLIED
COPPER BUS BAR
AWG 2 .25 ROUND OR .24 MAX SQUARE
AWG .20 ROUND

5/16-24 UNF - 2B



CONNECTOR #B2A
ALUMINUM (TIN PLATED)

(R.150)



NON-UL LISTED COMPONENTS

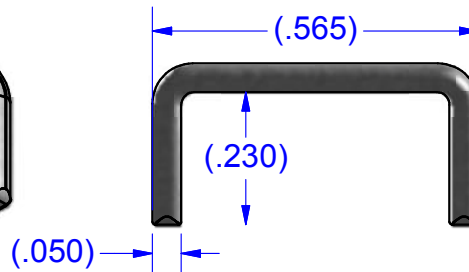
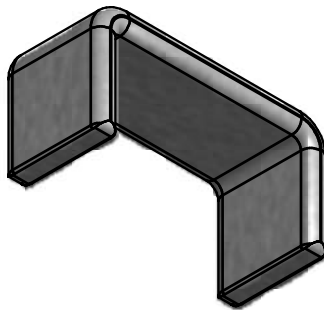
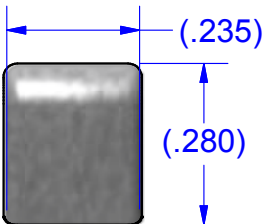


PART NUMBERS

B2A-NM-PCB-HEX25 (ASSEMBLED)

B2A-NM-PCB-HEX25 (KITTED)

BUS #14257
COPPER (TIN SOLDERABLE)



THIS DRAWING AND DESIGN ARE THE PROPERTY OF INTERNATIONAL HYDRAULICS, INC., CLEVELAND, OHIO, AND MAY NOT BE DUPLICATED, USED FOR THE BASIS OF DESIGN OR MANUFACTURE WITHOUT THE WRITTEN PERMISSION OF INTERNATIONAL HYDRAULICS, INC., CLEVELAND, OHIO.

INTERNATIONAL HYDRAULICS, INC.

GENERAL TOLERANCES
±.015 (±0,038mm)

TITLE: BUS BAR MOUNT
Connector + PCB MOUNT
ASSEMBLED CONNECTOR

MATERIAL:
SEE ABOVE

SIZE: DRAWN BY: TDS DWG NO.: B2A-NM-PCB-HEX25(-KIT) REV: 1

FINISH: DATE: 2/27/12
4/20/2015

THIS IS A CAD DRAWING, DO NOT MANUALLY REVISE