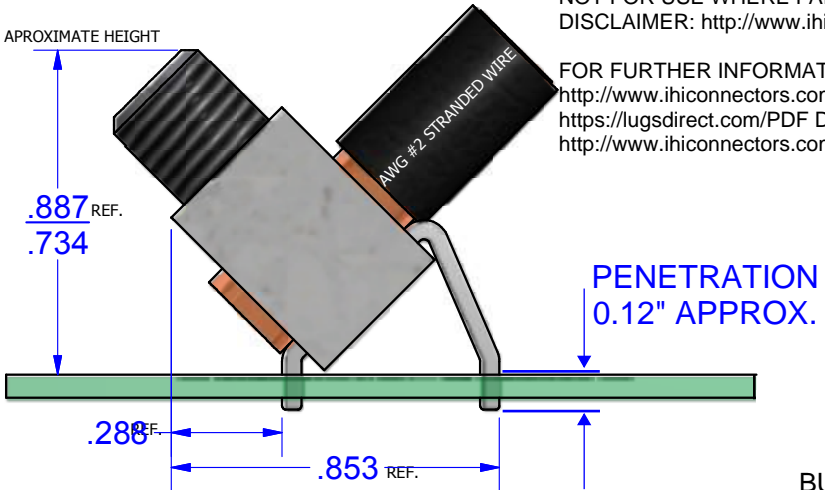


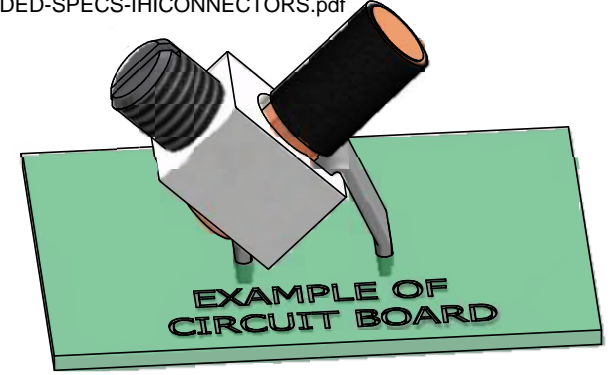
NOT FOR USE WHERE FAILURE CREATES A HAZARD TO HUMAN HEALTH OR SAFETY. ALL PRODUCTS ARE SUBJECT TO THIS FULL DISCLAIMER: <http://www.ihconnectors.com/disclaimer.html>

FOR FURTHER INFORMATION ON THE PROPER USE OF THIS PRODUCT IN SPECIFIC APPLICATIONS SEE
http://www.ihconnectors.com/High_Amp_Wide_Trace_PCB_Wire_Connection.html
https://lugsdirect.com/PDF_Documents/5-16-SLOTTEDSCREW-BIT-RECOMMENDED-SPECS-IHCONNECTORS.pdf
<http://www.ihconnectors.com/Technical-Data-Installation.htm>



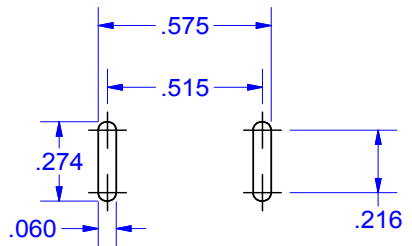
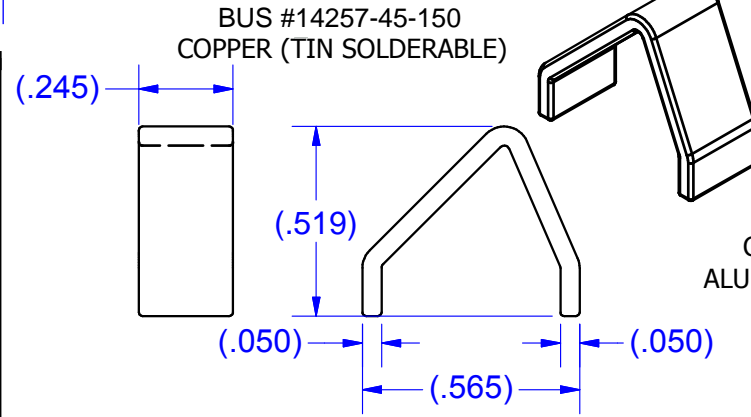
PARTS MARKED

- B2
- IHI LOGO
- CSA LOGO
- UL REGOGNITION LOGO
- 2-14CU7
- 2-8AL7



EXTRUSION CAVITY ID MARKS WHEN USED FOLLOW THIS TYPICAL PATTERN ON THE TOP OF THE PART

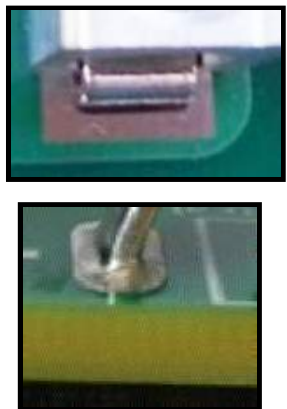
5/16-24 UNF - 2B



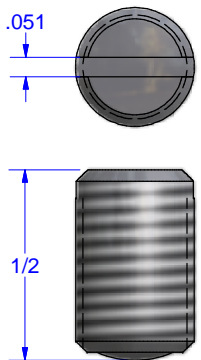
EXAMPLE OF CIRCUIT BOARD

Component Screw Options

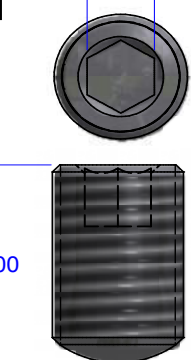
EXAMPLES OF TYPICAL SOLDER PADS



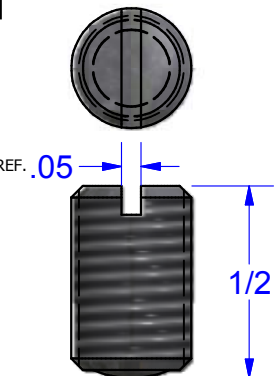
SCREW #12786SS STAINLESS STEEL INSERTED TO BOTTOM OF WIRE HOLE



Screw #12786-HEX Steel (Zinc Plated) 4mm 5/32



SCREW # 12786/15718/15720 Steel (Zinc Plated) INSERTED TO BOTTOM OF WIRE HOLE



Schematic drawing covers:
 B2A-PCB-45-150
 B2A-PCB-45-150-HEX
 B2A-PCB-45-150-SS

THIS DRAWING AND DESIGN ARE THE PROPERTY OF INTERNATIONAL HYDRAULICS, INC., CLEVELAND, OHIO, AND MAY NOT BE DUPLICATED, USED FOR THE BASIS OF DESIGN OR MANUFACTURE WITHOUT THE WRITTEN PERMISSION OF INTERNATIONAL HYDRAULICS, INC., CLEVELAND, OHIO.

GENERAL TOLERANCES ±.015 (±0.038)

MATERIAL: SEE ABOVE

FINISH:

INTERNATIONAL HYDRAULICS, INC.

TITLE: Connector + bus for PCB Mount 45deg. ASSEMBLED CONNECTOR

SIZE: DRAWN BY: TDS DWG NO.: "MULTI" SEE ABOVE REV: 1

DATE: 11/7/11 11/7/14 IHI CONNECTORS