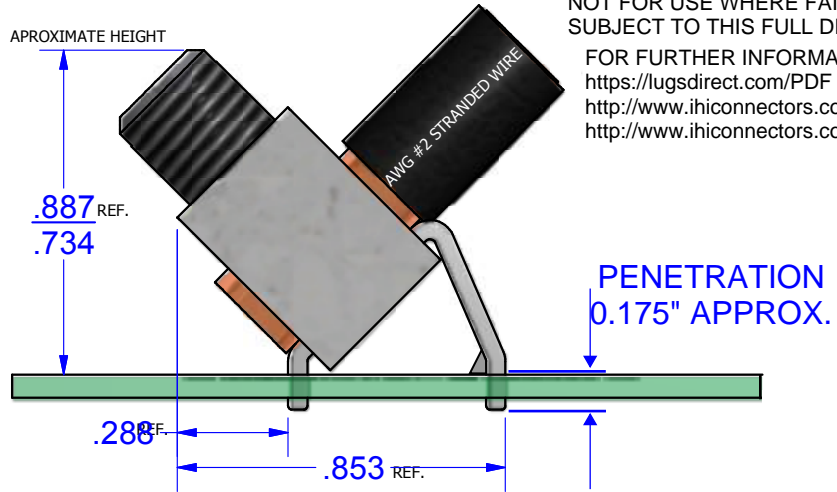
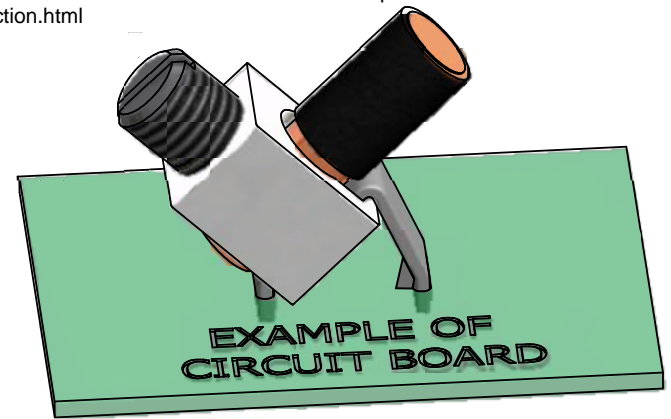



NOT FOR USE WHERE FAILURE CREATES A HAZARD TO HUMAN HEALTH OR SAFETY. ALL PRODUCTS ARE SUBJECT TO THIS FULL DISCLAIMER: <http://www.ihconnectors.com/disclaimer.html>
 FOR FURTHER INFORMATION ON THE PROPER USE OF THIS PRODUCT IN SPECIFIC APPLICATIONS SEE <https://lugsdirect.com/PDF Documents/5-16-SLOTTEDSCREW-BIT-RECOMMENDED-SPECS-IHCONNECTORS.pdf>
http://www.ihconnectors.com/High_Amp_Wide_Trace_PCB_Wire_Connection.html
<http://www.ihconnectors.com/Technical-Data-Installation.htm>

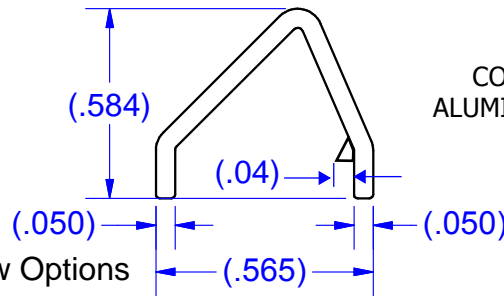
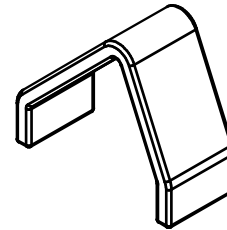
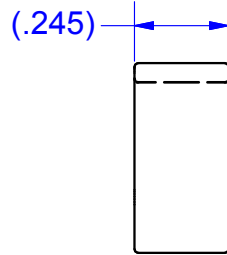


PARTS MARKED
 B2
 IHI LOGO
 CSA LOGO
 UL REGOGNITION LOGO
 2-14CU7
 2-8AL7

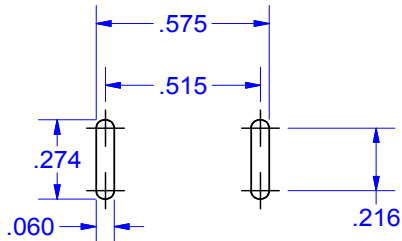
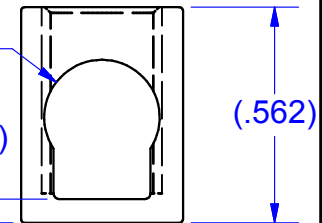
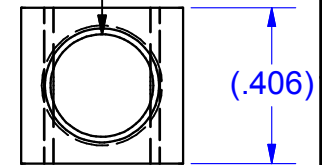


 EXTRUSION CAVITY ID MARKS WHEN USED FOLLOW THIS TYPICAL PATTERN ON THE TOP OF THE PART
 5/16-24 UNF - 2B

BUS #14257-45-175
 COPPER (TIN SOLDERABLE)

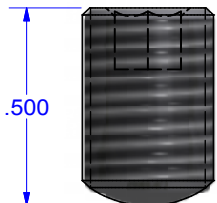
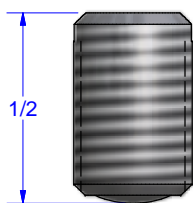
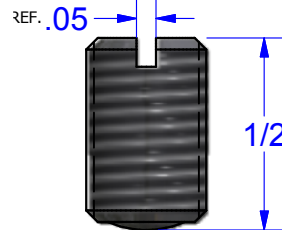
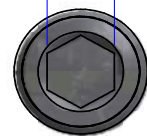
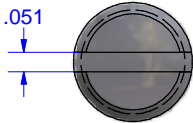
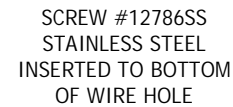
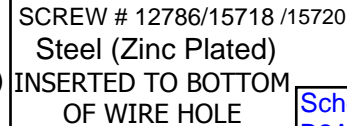
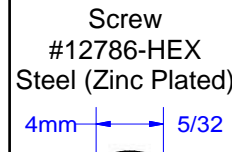


CONNECTOR #B2A
 ALUMINUM (TIN PLATED)

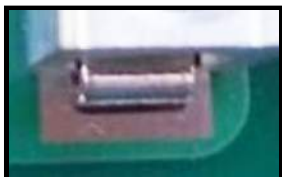


EXAMPLE OF CIRCUIT BOARD

Component Screw Options



EXAMPLES OF TYPICAL SOLDER PADS



Schematic drawing covers:
 B2A-PCB-45-175
 B2A-PCB-45-175-HEX
 B2A-PCB-45-175-SS

THIS DRAWING AND DESIGN ARE THE PROPERTY OF INTERNATIONAL HYDRAULICS, INC., CLEVELAND, OHIO, AND MAY NOT BE DUPLICATED, USED FOR THE BASIS OF DESIGN OR MANUFACTURE WITHOUT THE WRITTEN PERMISSION OF INTERNATIONAL HYDRAULICS, INC., CLEVELAND, OHIO.

GENERAL TOLERANCES
 ±.015 (±0.038)

MATERIAL: SEE ABOVE

FINISH:

INTERNATIONAL HYDRAULICS, INC.

TITLE:
 Connector + bus for PCB Mount
 45deg. ASSEMBLED CONNECTOR

SIZE: DRAWN BY: TDS DWG NO.: "MULTI" SEE ABOVE REV: 1

DATE: 11/7/11 11/7/14 IHI CONNECTORS