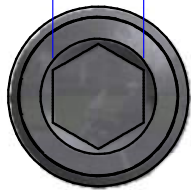
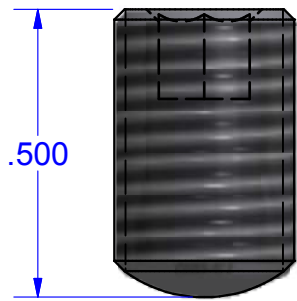


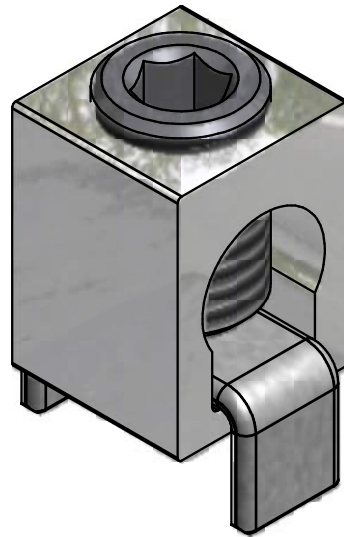
4mm 5/32



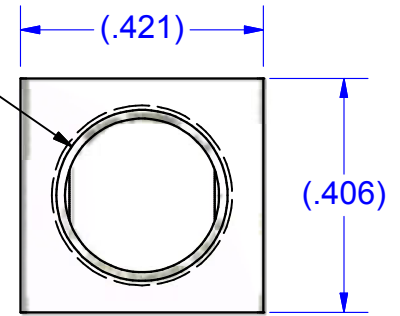
SCREW #12786-HEX
STEEL (ZINC PLATED)



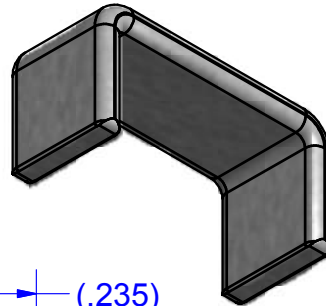
.500



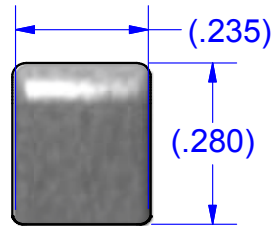
5/16-24 UNF - 2B



CONNECTOR #B2A
ALUMINUM (TIN PLATED)

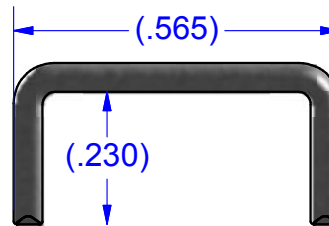


BUSS #14257
COPPER (TIN SOLDERABLE)



(.235)

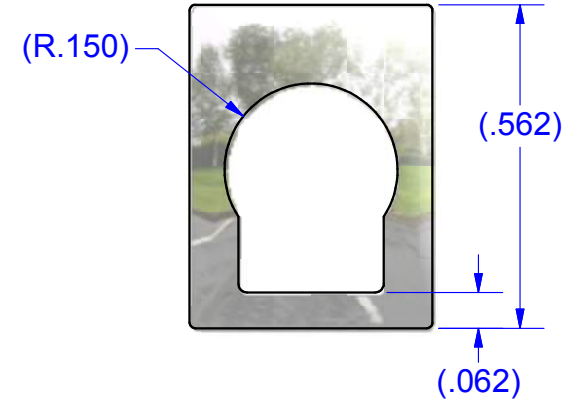
(.280)



(.565)

(.230)

(.050)



(R.150)

(.562)

(.062)

PARTS MARKED

- B2
- IHI LOGO
- CSA LOGO
- UL REGOGNITION LOGO
- 2-14CU7
- 2-8AL7

NOT FOR USE WHERE FAILURE CREATES A HAZARD TO HUMAN HEALTH OR SAFETY. ALL PRODUCTS ARE SUBJECT TO THIS FULL DISCLAIMER:
<http://www.ihiconnectors.com/disclaimer.html>

FOR FURTHER INFORMATION ON THE PROPER USE OF THIS PRODUCT IN SPECIFIC APPLICATIONS SEE
<http://www.ihiconnectors.com/GuideToFlexFlexibleFineStrandedWireCableMechanicalLugsFAQ.html>
http://www.ihiconnectors.com/High_Amp_Wide_Trace_PCB_Wire_Connection.html
<http://www.ihiconnectors.com/Technical-Data-Installation.htm>

THIS DRAWING AND DESIGN ARE THE PROPERTY OF INTERNATIONAL HYDRAULICS, INC., CLEVELAND, OHIO, AND MAY NOT BE DUPLICATED, USED FOR THE BASIS OF DESIGN OR MANUFACTURE WITHOUT THE WRITTEN PERMISSION OF INTERNATIONAL HYDRAULICS, INC., CLEVELAND, OHIO.

INTERNATIONAL HYDRAULICS, INC.

GENERAL TOLERANCES
±.015 (±0,038mm)

TITLE:
Connector + Buss for PCB Mount
ASSEMBLED CONNECTOR

MATERIAL:
SEE ABOVE

SIZE: DRAWN BY: **TDS** DWG NO.: **B2A-PCB-HEX (SALES)** REV: **1**

FINISH:

DATE: **2/27/12** THIS IS A CAD DRAWING, DO NOT MANUALLY REVISE