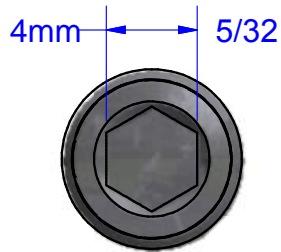


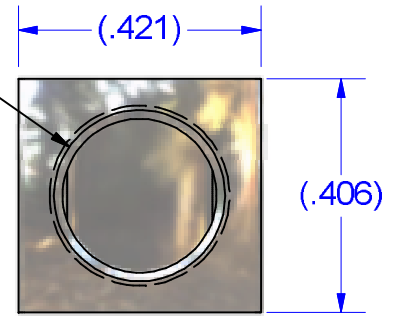
SCREW # 12786/15718/15720
STEEL (ZINC PLATED)



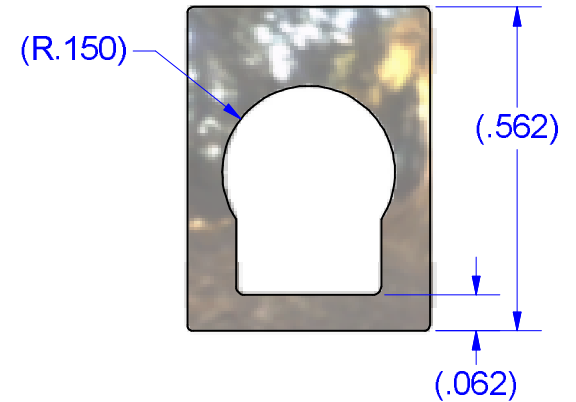
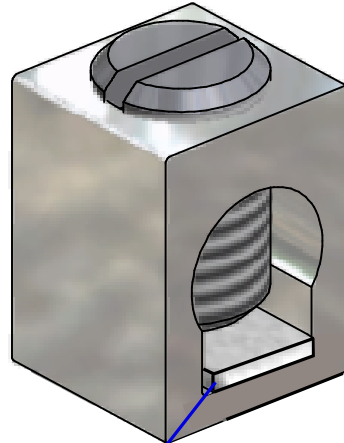
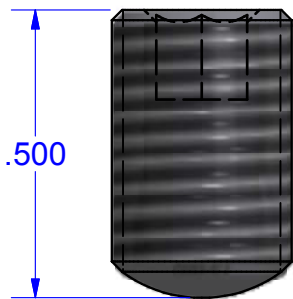
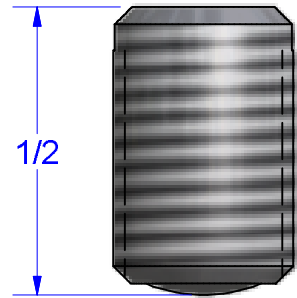
SCREW #12786-HEX
STEEL (ZINC PLATED)



EXTRUSION CAVITY ID MARKS
WHEN USED FOLLOW THIS TYPICAL
PATTERN ON THE TOP OF THE PART



CONNECTOR #B2A
ALUMINUM (TIN PLATED)



ALSO AVAILABLE: 4mm HEX SOCKET

CUSTOMER SUPPLIED BUS STRIP & COLLAR RETENTION
115 AMP .24 X .04 CROSS SECTION
50 AMP .25 X .032 CROSS SECTION
TIN PLATED COPPER ALLOY
MEANS FOR ANTI-ROTATION AND ANTI-PULL OFF
CONSULT IHI FOR PROPER BUS FIT TOLERANCES

PARTS MARKED

- B2
- IHI LOGO
- CSA LOGO
- UL REGOGNITION LOGO
- 2-14CU7
- 2-8AL7

NOT FOR USE WHERE FAILURE CREATES A HAZARD TO HUMAN HEALTH OR SAFETY. ALL PRODUCTS ARE SUBJECT TO THIS FULL DISCLAIMER: <http://www.ihiconnectors.com/disclaimer.html>

FOR FURTHER INFORMATION ON THE PROPER USE OF THIS PRODUCT IN SPECIFIC APPLICATIONS SEE http://www.ihiconnectors.com/High_Amp_Wide_Trace_PCB_Wire_Connection.html
<http://www.ihiconnectors.com/Technical-Data-Installation.htm>
<https://lugsdirect.com/PDF Documents/5-16-SLOTTEDSCREW-BIT-RECOMMENDED-SPECS-IHICONNECTORS.pdf>

<small>THIS DRAWING AND DESIGN ARE THE PROPERTY OF INTERNATIONAL HYDRAULICS, INC., CLEVELAND, OHIO, AND MAY NOT BE DUPLICATED, USED FOR THE BASIS OF DESIGN OR MANUFACTURE WITHOUT THE WRITTEN PERMISSION OF INTERNATIONAL HYDRAULICS, INC., CLEVELAND, OHIO.</small>					INTERNATIONAL HYDRAULICS, INC.				
GENERAL TOLERANCES ±.015 (±0,038mm)					TITLE: <h2 style="text-align: center;">Connector</h2> <h3 style="text-align: center;">ASSEMBLED CONNECTOR</h3>				
MATERIAL: SEE ABOVE		SIZE:	DRAWN BY: TDS	DWG NO.: B2A (SALES)	REV: 2				
FINISH:		DATE: 12/15/08 11/10/14		THIS IS A CAD DRAWING, DO NOT MANUALLY REVISE					