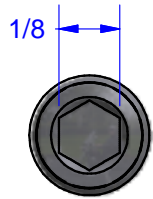


NOT FOR USE WHERE FAILURE CREATES A HAZARD TO HUMAN HEALTH OR SAFETY. ALL PRODUCTS ARE SUBJECT TO THIS FULL DISCLAIMER: <http://www.ihconnectors.com/disclaimer.html>

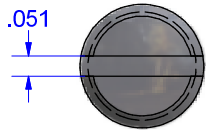
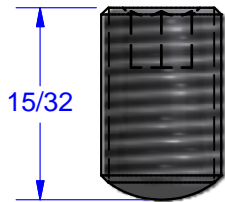
FOR FURTHER INFORMATION ON THE PROPER USE OF THIS PRODUCT IN SPECIFIC APPLICATIONS SEE

<http://www.ihconnectors.com/GuideToFlexFlexibleFineStrandedWireCableMechanicalLugsFAQ.html>
http://www.ihconnectors.com/High_Amp_Wide_Trace_PCB_Wire_Connection.html
<http://www.ihconnectors.com/Technical-Data-Installation.htm>

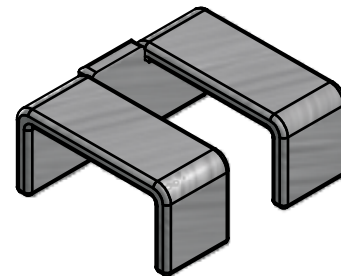
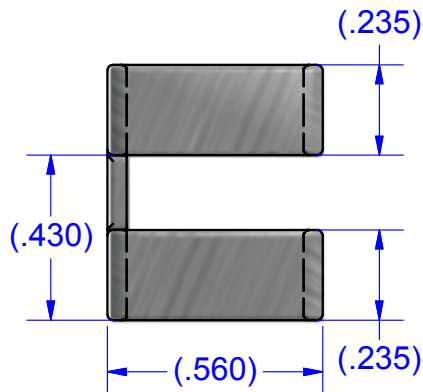
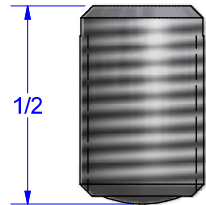
ALL SHOWN AT 2X ACTUAL SIZE



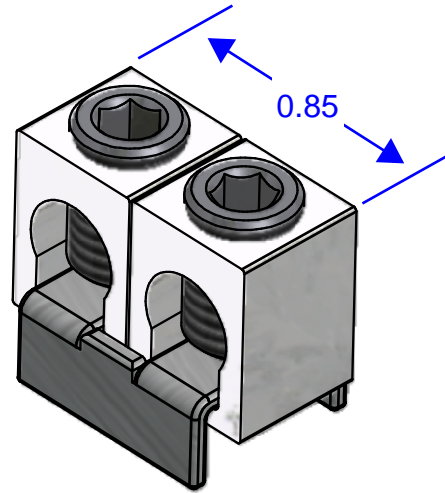
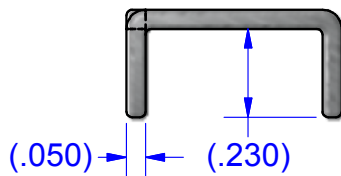
SCREW #13627
ALUMINUM
(TIN PLATED)



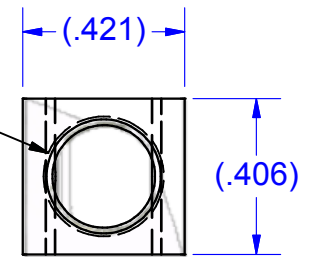
SCREW #10850
ALUMINUM
(TIN PLATED)



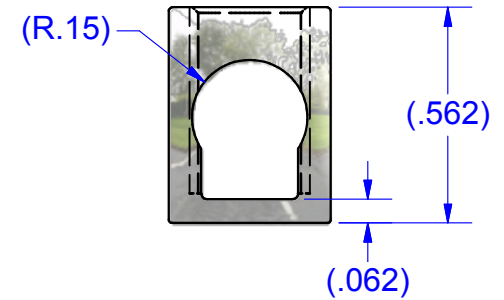
DUAL LUG STAPLE #PT2567
COPPER (TIN SOLDERABLE)



5/16-24 UNF - 2B



CONNECTOR #B2A
ALUMINUM (TIN PLATED)



PARTS MARKED

- 4513
- IHI LOGO
- UL RECOGNITION LOGO
- 2-14CU9
- 2-8AL9

Schematic drawing covers:
B2A9-2PCB
B2A9-2PCB-HEX

THIS DRAWING AND DESIGN ARE THE PROPERTY OF INTERNATIONAL HYDRAULICS, INC., CLEVELAND, OHIO, AND MAY NOT BE DUPLICATED, USED FOR THE BASIS OF DESIGN OR MANUFACTURE WITHOUT THE WRITTEN PERMISSION OF INTERNATIONAL HYDRAULICS, INC., CLEVELAND, OHIO.		INTERNATIONAL HYDRAULICS, INC.	
GENERAL TOLERANCES ±.015 (±0.038)		TITLE: Connectors+Buss for PCB Mtg. ASSEMBLED CONNECTOR	
MATERIAL: SEE ABOVE	SIZE:	DRAWN BY: JLF	DWG NO.: SEE ABOVE
FINISH:	DATE: 2/21/2018	IHI CONNECTORS	