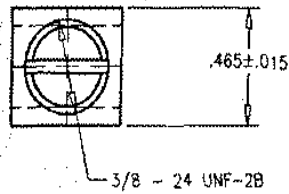
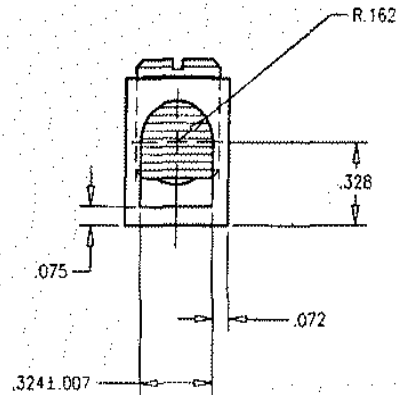
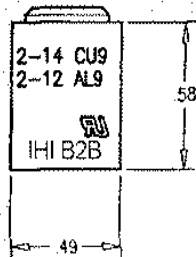


CONDITIONS OF ACCEPTABILITY ARE NOMINALLY PROVIDED BY THE CUSTOMER BUS BAR & / OR PLASTIC TURN PREVENT & PULL OFF PREVENT.

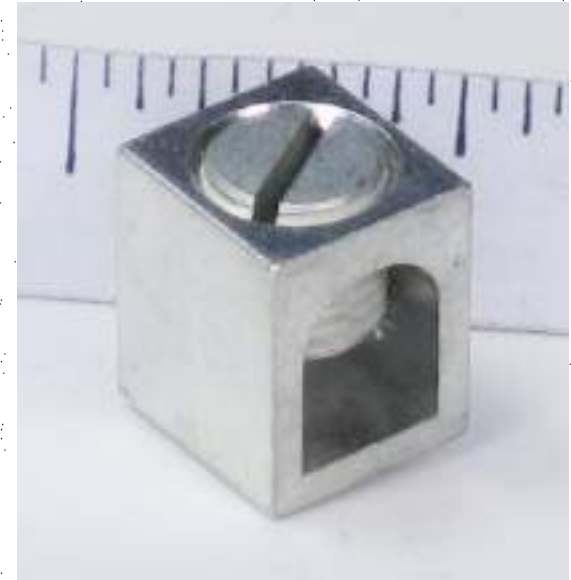


IHI SUPPLIES BODY AND ASSEMBLED SCREW
 CUSTOMER SUPPLIES BUS TO MEET UL SPECS
 CUSTOMER PROVIDES ANTI-ROTATION/PULL OFF
 BUS CROSS SECTION .0312 X .045 COPPER ALLOY BUS
 BODY + BUS RATED AT 65 AMPS



NOTES:

1. WIRE RANGE: AWG #2 -14 COPPER & AWG #2 12 ALUMINUM
2. UL RECOGNIZED "UR" UNDER UL486 FOR DUAL RATING OF COPPER & ALUMINUM WIRES
3. SCREW TIGHTENING TORQUE:
 AWG 2 - 3 50 in-lb AWG 4 - 6 45 in-lb AWG 8 40 in-lb AWG 10 - 14 35 in-lb
4. BODY AND SCREW - TIN PLATED HIGH TENSILE ALUMINUM
5. MULTIPLE WIRES: TWO (2) #10 AWG WIRES MAY BE USED IN ONE CONNECTOR.
 ALL OTHER WIRE SIZES, ONE (1) ONLY MAY BE USED
6. WIRE HEAT RATING 90C (UL CU9AL)
7. MAXIMUM CURRENT RATING 65 AMPS
8. BUS SIZE AND MATERIAL - CROSS SECTION .312 X .045, Cu
9. BUS & TURN PREVENTION PROVIDED BY INTEGRATOR OF ASSEMBLY
10. WIRE CLAMPING SCREW: ALUMINUM ALLOY. 3/8 - 24 X 13/32 SLOTTED HEADLESS SET SCREW
 W/ DOME SHAPED BOTTOM SUPPLY 1 PER CUSTOMER
11. FINISH: TIN PLATE .0001" MIN THICK



NOT FOR USE WHERE FAILURE CREATES A HAZARD TO HUMAN HEALTH OR SAFETY. ALL PRODUCTS ARE SUBJECT TO THIS FULL DISCLAIMER:
<http://www.ihiconnectors.com/disclaimer.html>

FOR FURTHER INFORMATION ON THE PROPER USE OF THIS PRODUCT IN SPECIFIC APPLICATIONS SEE:
http://www.ihiconnectors.com/High_Amp_Wide_Trace_PCB_Wire_Connection.html
<http://www.ihiconnectors.com/Technical-Data-Installation.htm>

IHI CONNECTORS®

© International Hydraulics Inc

B2B

Rev