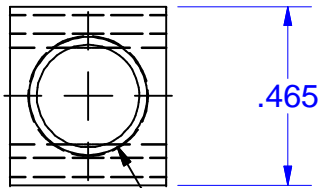


PART MARKED

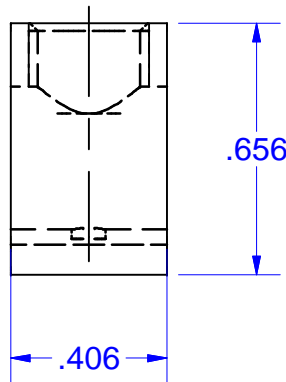
B2C 2-8AL7
 2-14CU7
 RU LOGO
 CSA LOGO
 IHI



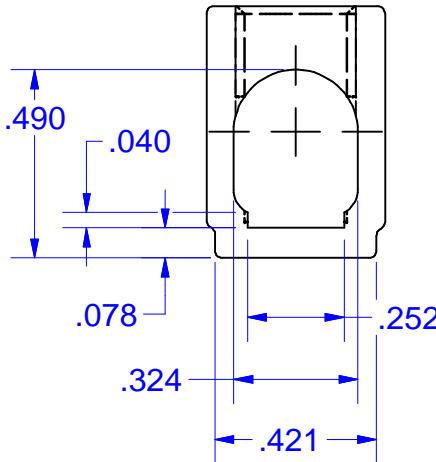
.465

5/16-24 UNF - 2B

CUSTOMER SUPPLIED BUS STRIP & COLLAR RETENTION
 115 AMP .24 X .04 CROSS SECTION
 50 AMP .25 X .032 CROSS SECTION
 TIN PLATED COPPER ALLOY
 MEANS FOR ANTI-ROTATION AND ANTI-PULL OFF
 CONSULT IHI FOR PROPER BUS FIT TOLERANCES



.656



.490

.040

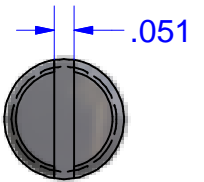
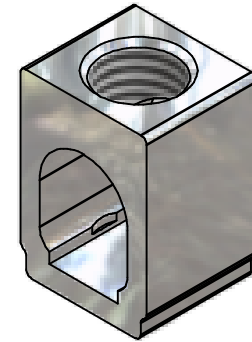
.078

.324

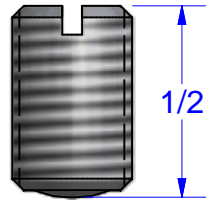
.421

.252

REVISION HISTORY			
REV	DESCRIPTION	DATE	APPROVED
1	ADD NOTES	12/05/03	CDMR
2	REDRAWN IN CAD ALSO ADD ASSEMBLY VIEW	11/18/08	TIM SMITH

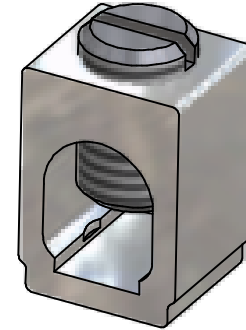


.051



1/2

SCREW #12786/15718
 (PLATED STEEL)



NOT FOR USE WHERE FAILURE CREATES A HAZARD TO HUMAN HEALTH OR SAFETY. ALL PRODUCTS ARE SUBJECT TO THIS FULL DISCLAIMER: <http://www.ihiconnectors.com/disclaimer.html>

FOR FURTHER INFORMATION ON THE PROPER USE OF THIS PRODUCT IN SPECIFIC APPLICATIONS SEE http://www.ihiconnectors.com/High_Amp_Wide_Trace_PCB_Wire_Connection.html
<http://www.ihiconnectors.com/Technical-Data-Installation.htm>

NOTES:

1. WIRE RANGE: #2-#8 AWG. AL7. #2-#14 AWG. CU7
 2. CONNECTOR MUST WITHSTAND $\frac{8.93 \text{ Kg-cm}}{50 \text{ Lbs-in}}$ OF TIGHTENING TORQUE WITH WIRE
 3. PART FEATURES TO BE SYMMETRICAL ABOUT THE INDICATED CENTERLINE.
- AND SCREW # 12786/15718 INSTALLED WITHOUT DAMAGE TO CONNECTOR OR SCREW.

CONNECTOR AS SHOWN: B2C

ASSEMBLED WITH

1. 12786 SLOTTED PLATED STEEL SCREW AVAILABLE WITH STAINLESS SLOTTED SCREW OR HEX SOCKET PLATED STEEL SCREW

THIS DRAWING AND DESIGN ARE THE PROPERTY OF INTERNATIONAL HYDRAULICS, INC., CLEVELAND, OHIO, AND MAY NOT BE DUPLICATED, USED FOR THE BASIS OF DESIGN OR MANUFACTURE WITHOUT THE WRITTEN PERMISSION OF INTERNATIONAL HYDRAULICS, INC., CLEVELAND, OHIO.

UNLESS OTHERWISE SPECIFIED:
 1. DIMENSIONS ARE IN INCHES
 2. REMOVE ALL BURRS AND SHARP EDGES
 3. TOLERANCE ON DIMENSIONS:
 2 PLACES (.00) +/- .015
 3 PLACES (.000) +/- .005
 FRACTIONS (.000) +/- 1-32
 ANGLES (00°) +/- 0.5°
 ANGLES (0.00°) +/- 0.05°

MATERIAL: 6061-T6 ALUMINUM
 FINISH: TIN PLATE: EMS

INTERNATIONAL HYDRAULICS, INC.

TITLE:

B2C-SALES
 CONNECTOR

SIZE:	DRAWN BY: TDS	DWG NO.: B2C-SALES	REV: 2
DATE: 11/18/08	THIS IS A CAD DRAWING, DO NOT MANUALLY REVISE		