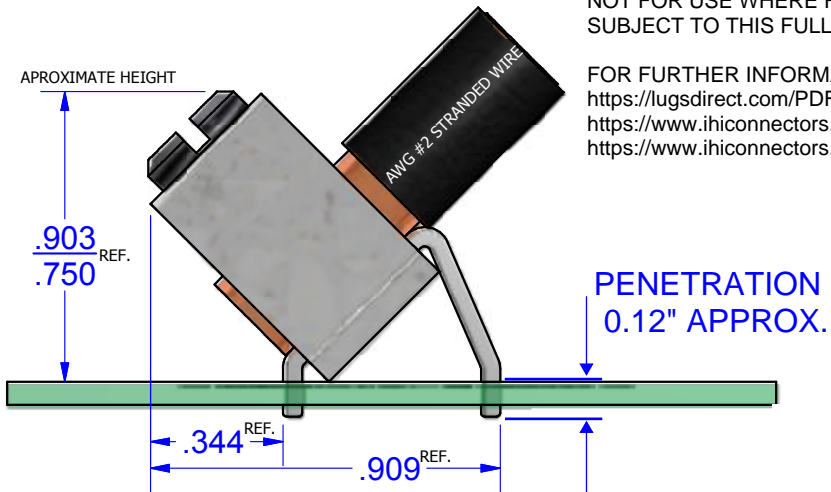
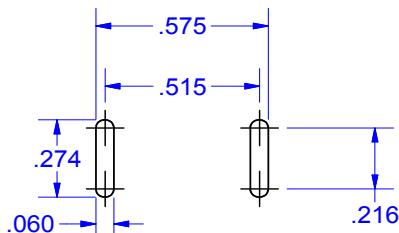
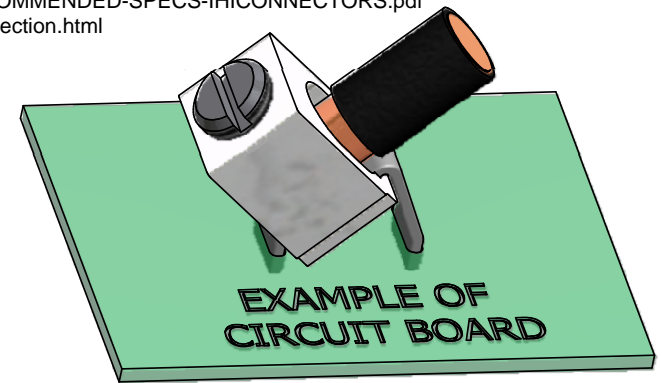


NOT FOR USE WHERE FAILURE CREATES A HAZARD TO HUMAN HEALTH OR SAFETY. ALL PRODUCTS ARE SUBJECT TO THIS FULL DISCLAIMER: <http://www.ihconnectors.com/disclaimer.html>

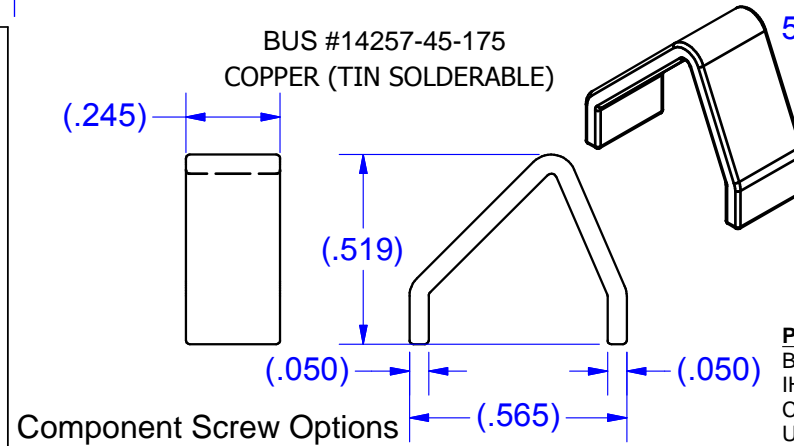
FOR FURTHER INFORMATION ON THE PROPER USE OF THIS PRODUCT IN SPECIFIC APPLICATIONS SEE <https://lugsdirect.com/PDF Documents/5-16-SLOTTEDSCREW-BIT-RECOMMENDED-SPECS-IHCONNECTORS.pdf>
https://www.ihconnectors.com/High_Amp_Wide_Trace_PCB_Wire_Connection.html
<https://www.ihconnectors.com/Technical-Data-Installation.htm>



CONDITIONS OF ACCEPTABILITY ARE NOMINALLY PROVIDED BY THE TURN PREVENT STAPLES OF MINIMUM REQUIRED CROSS SECTION IN CONJUNCTION WITH ADEQUATE PCB STRUCTURE.



EXAMPLE OF CIRCUIT BOARD



Component Screw Options

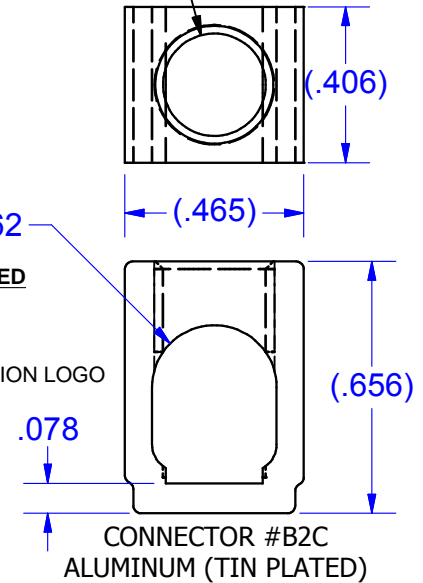
BUS #14257-45-175
COPPER (TIN SOLDERABLE)

5/16-24 UNF - 2B

PARTS MARKED

B2C
IHI LOGO
CSA LOGO
UL RECOGNITION LOGO
2-14CU7
2-8AL7

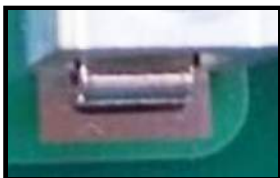
R.162



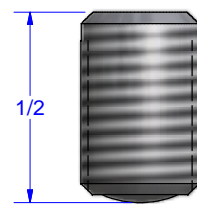
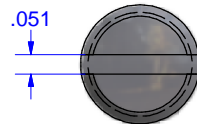
CONNECTOR #B2C
ALUMINUM (TIN PLATED)

Schematic drawing covers:
B2C-PCB-45-150
B2C-PCB-45-150-HEX
B2C-PCB-45-150-SS

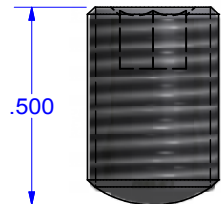
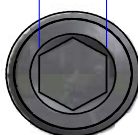
EXAMPLES OF TYPICAL SOLDER PADS



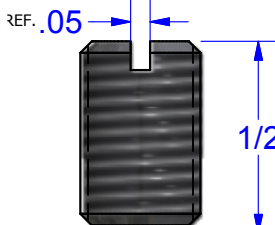
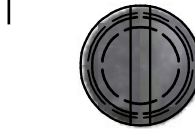
SCREW #12786SS
STAINLESS STEEL
INSERTED TO BOTTOM
OF WIRE HOLE



Screw
#12786-HEX
Steel (Zinc Plated)
4mm 5/32



SCREW #12786/15718/15720
Steel (Zinc Plated)
INSERTED TO BOTTOM
OF WIRE HOLE



THIS DRAWING AND DESIGN ARE THE PROPERTY OF INTERNATIONAL HYDRAULICS, INC., CLEVELAND, OHIO, AND MAY NOT BE DUPLICATED, USED FOR THE BASIS OF DESIGN OR MANUFACTURE WITHOUT THE WRITTEN PERMISSION OF INTERNATIONAL HYDRAULICS, INC., CLEVELAND, OHIO.

GENERAL TOLERANCES
±.015 (±0.038)

MATERIAL: **SEE ABOVE**

FINISH:

INTERNATIONAL HYDRAULICS, INC.

TITLE:
**Connector + bus for PCB Mount
45deg. ASSEMBLED CONNECTOR**

SIZE: DWG NO.: **TDS "MULTI" SEE ABOVE** REV: **1**

DATE: 11/7/11
11/7/14 **IHI CONNECTORS**