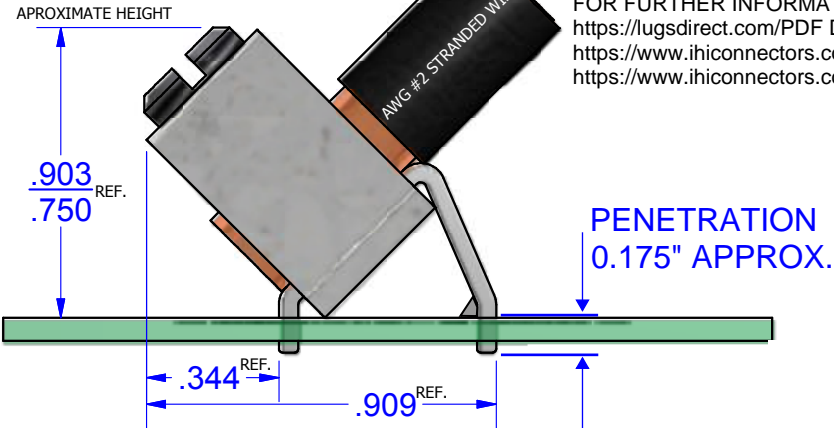


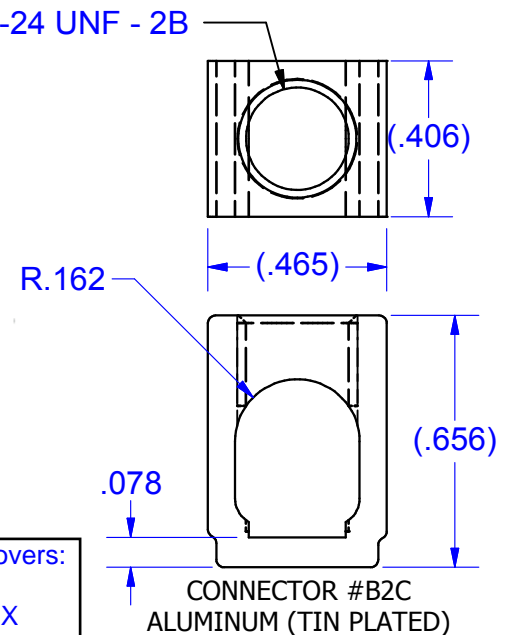
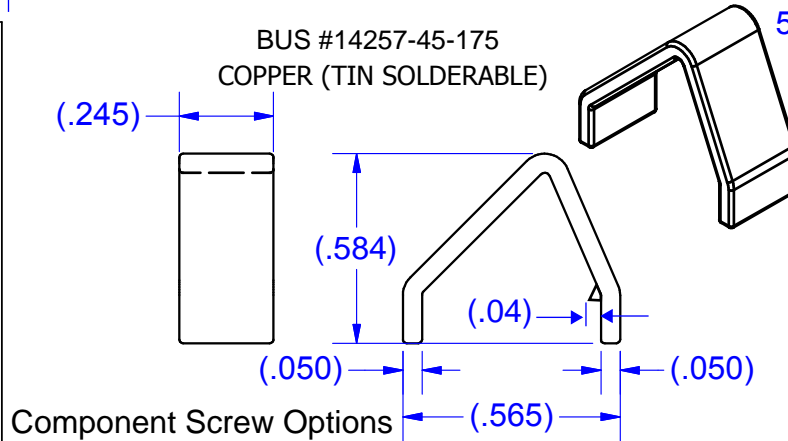
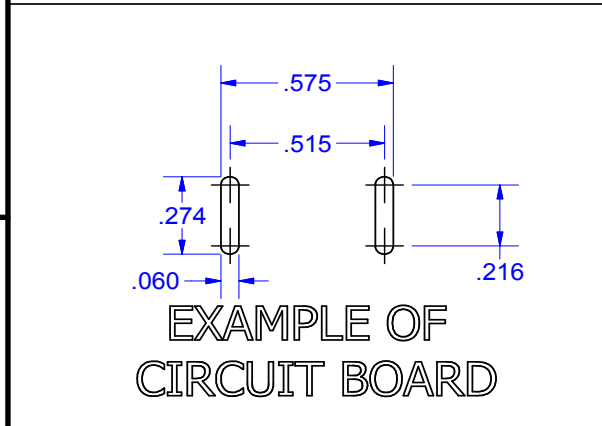
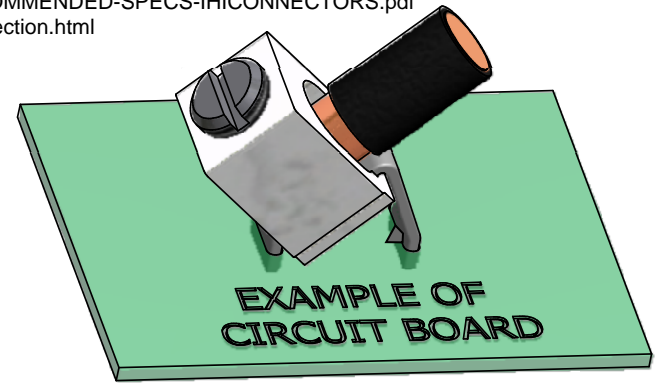
NOT FOR USE WHERE FAILURE CREATES A HAZARD TO HUMAN HEALTH OR SAFETY. ALL PRODUCTS ARE SUBJECT TO THIS FULL DISCLAIMER: <http://www.ihiconnectors.com/disclaimer.html>

FOR FURTHER INFORMATION ON THE PROPER USE OF THIS PRODUCT IN SPECIFIC APPLICATIONS SEE <https://lugsdirect.com/PDF Documents/5-16-SLOTTEDSCREW-BIT-RECOMMENDED-SPECS-IHICONNECTORS.pdf>
https://www.ihiconnectors.com/High_Amp_Wide_Trace_PCB_Wire_Connection.html
<https://www.ihiconnectors.com/Technical-Data-Installation.htm>

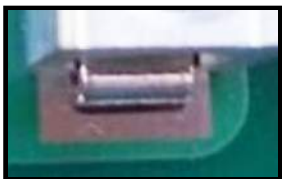


PARTS MARKED

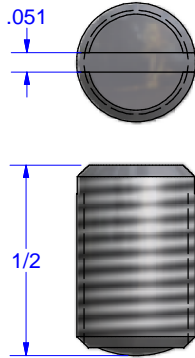
- B2C
- IHI LOGO
- CSA LOGO
- UL REGOGNITION LOGO
- 2-14CU7
- 2-8AL7



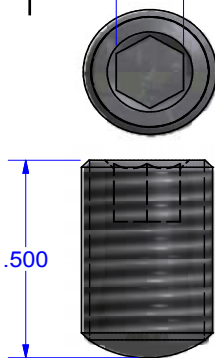
EXAMPLES OF TYPICAL SOLDER PADS



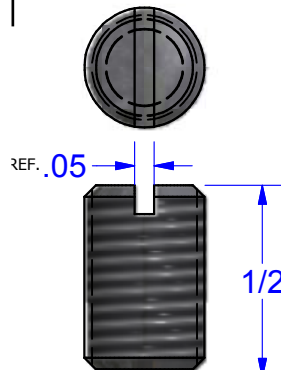
SCREW #12786SS
STAINLESS STEEL
INSERTED TO BOTTOM
OF WIRE HOLE



Screw #12786-HEX
Steel (Zinc Plated)
4mm 5/32



SCREW # 12786/15718/15720
Steel (Zinc Plated)
INSERTED TO BOTTOM
OF WIRE HOLE



Schematic drawing covers:
B2C-PCB-45-175
B2C-PCB-45-175-HEX
B2C-PCB-45-175-SS

THIS DRAWING AND DESIGN ARE THE PROPERTY OF INTERNATIONAL HYDRAULICS, INC., CLEVELAND, OHIO, AND MAY NOT BE DUPLICATED, USED FOR THE BASIS OF DESIGN OR MANUFACTURE WITHOUT THE WRITTEN PERMISSION OF INTERNATIONAL HYDRAULICS, INC., CLEVELAND, OHIO.

GENERAL TOLERANCES
±.015 (±0.038)

MATERIAL: **SEE ABOVE**

FINISH:

INTERNATIONAL HYDRAULICS, INC.

TITLE:
**Connector + bus for PCB Mount
45deg. ASSEMBLED CONNECTOR**

SIZE: DRAWN BY: DWG NO.: REV:
TDS "MULTI" SEE ABOVE 1

DATE: 11/7/11
11/7/14

IHI CONNECTORS