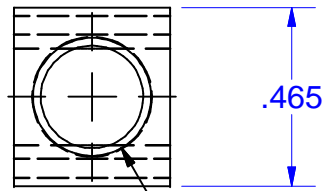


PART MARKED

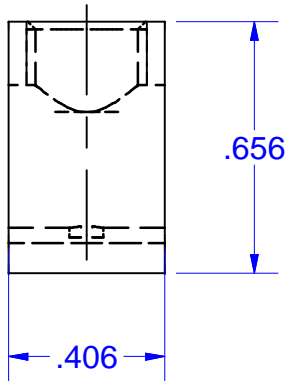
B2C 2-8AL7
 2-14CU7
 RU LOGO
 CSA LOGO
 IHI



.465

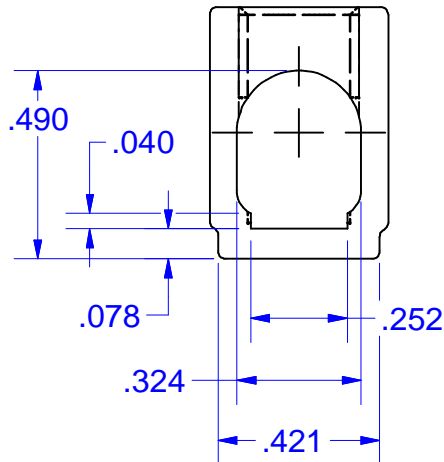
5/16-24 UNF - 2B

CONDITIONS OF ACCEPTABILITY ARE NOMINALLY PROVIDED BY THE CUSTOMER BUS BAR & / OR PLASTIC TURN PREVENT & PULL OFF PREVENT.
 115 AMP .24 X .04 CROSS SECTION
 50 AMP .25 X .032 CROSS SECTION
 TIN PLATED COPPER BUSBAR
 MEANS FOR ANTI-ROTATION AND ANTI PULL OFF
 CONSULT IHI FOR PROPER BUS FIT TOLERANCES



.656

.406



.490

.040

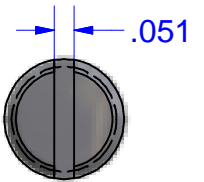
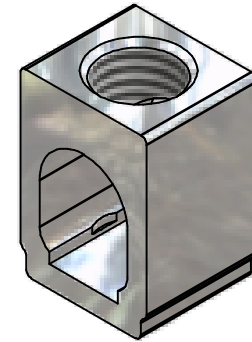
.078

.324

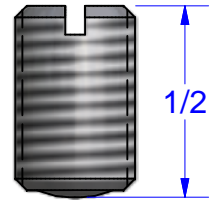
.252

.421

REVISION HISTORY			
REV	DESCRIPTION	DATE	APPROVED
1	ADD NOTES	12/05/03	CDMR
2	REDRAWN IN CAD ALSO ADD ASSEMBLY VIEW	11/18/08	TIM SMITH

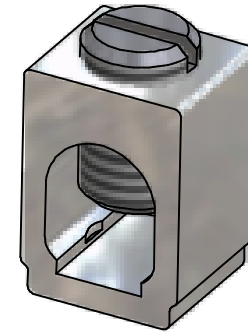


.051



1/2

SCREW #12786SS
 STAINLESS
 (UNPLATED)



NOTES:

1. WIRE RANGE: #2-#8 AWG. AL7. #2-#14 AWG. CU7
2. CONNECTOR MUST WITHSTAND $\frac{8.93 \text{ Kg-cm}}{50 \text{ Lbs-in}}$ OF TIGHTENING TORQUE WITH WIRE
3. PART FEATURES TO BE SYMMETRICAL ABOUT THE INDICATED CENTERLINE.

NOT FOR USE WHERE FAILURE CREATES A HAZARD TO HUMAN HEALTH OR SAFETY. ALL PRODUCTS ARE SUBJECT TO THIS FULL DISCLAIMER: <http://www.ihiconnectors.com/disclaimer.html>

FOR FURTHER INFORMATION ON THE PROPER USE OF THIS PRODUCT IN SPECIFIC APPLICATIONS SEE http://www.ihiconnectors.com/High_Amp_Wide_Trace_PCB_Wire_Connection.html
<http://www.ihiconnectors.com/Technical-Data-Installation.htm>

CONNECTOR AS SHOWN: B2C

ASSEMBLED WITH

1. 12786 SLOTTED PLATED STEEL SCREW
 AVAILABLE WITH STAINLESS SLOTTED SCREW
 OR HEX SOCKET PLATED STEEL SCREW

THIS DRAWING AND DESIGN ARE THE PROPERTY OF INTERNATIONAL HYDRAULICS, INC., CLEVELAND, OHIO, AND MAY NOT BE DUPLICATED, USED FOR THE BASIS OF DESIGN OR MANUFACTURE WITHOUT THE WRITTEN PERMISSION OF INTERNATIONAL HYDRAULICS, INC., CLEVELAND, OHIO.

UNLESS OTHERWISE SPECIFIED:
 1. DIMENSIONS ARE IN INCHES
 2. REMOVE ALL BURRS AND SHARP EDGES
 3. TOLERANCE ON DIMENSIONS:
 2 PLACES (.00) +/- .015
 3 PLACES (.000) +/- .005
 FRACTIONS (00) +/- 1-32
 ANGLES (00°) +/- 0.5°
 ANGLES (0.00°) +/- 0.05°

MATERIAL: **6061-T6 ALUMINUM**
 FINISH: **TIN PLATE: EMS**

INTERNATIONAL HYDRAULICS, INC.

TITLE:

**B2C-SALES
 CONNECTOR**

SIZE:	DRAWN BY: TDS	DWG NO.:	REV:
		B2C-SALES	2
DATE:	THIS IS A CAD DRAWING, DO NOT MANUALLY REVISE		
11/18/08			