

**IHI Connectors**  
 International Hydraulics Inc.  
 ihiconnectors.com™



To be used with  
 "Conditions of Acceptability"

**File E129884**

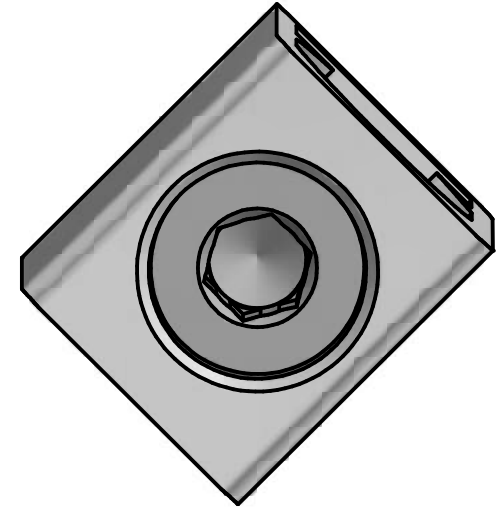
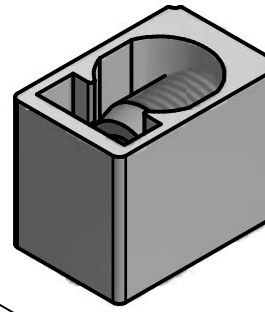
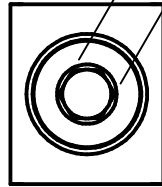
**Pressure Terminal  
 Connectors**

UL Cat. No.  
**B300**

**Wire Size** 300 kcmil –  
 4 AWG

**Rated Torque** 200 IN. LBS.

**300 – 4 AL7CU**

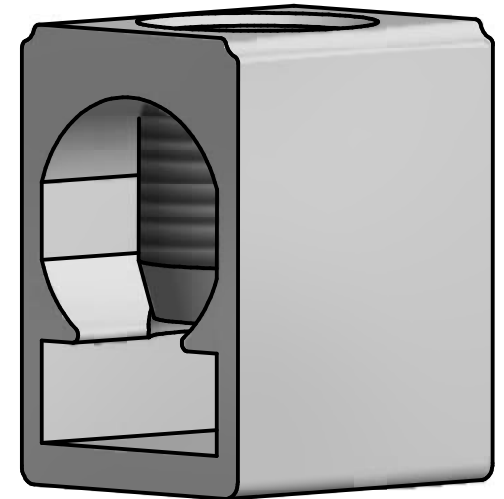
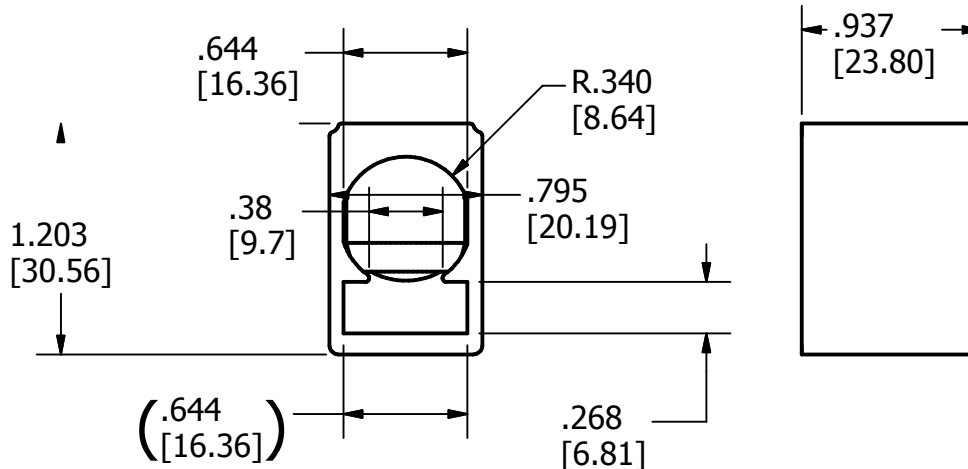


CONDITIONS OF ACCEPTABILITY ARE  
 NOMINALLY PROVIDED BY THE CUSTOMER  
 BUS BAR  
 & / OR PLASTIC TURN PREVENT & PULL OFF  
 PREVENT. MINIMUM REQUIRED CROSS  
 SECTION

.25" X .63" (.625") TIN  
 PLATED ALUMINUM OR  
 COPPER BUSBAR  
 OR  
 2 X .125" X .63" (.625")  
 TIN PLATED COPPER  
 BUSBAR

ALL PARTS  
 ASSEMBLED  
 WITH:  
 (1) 13562 SCREW

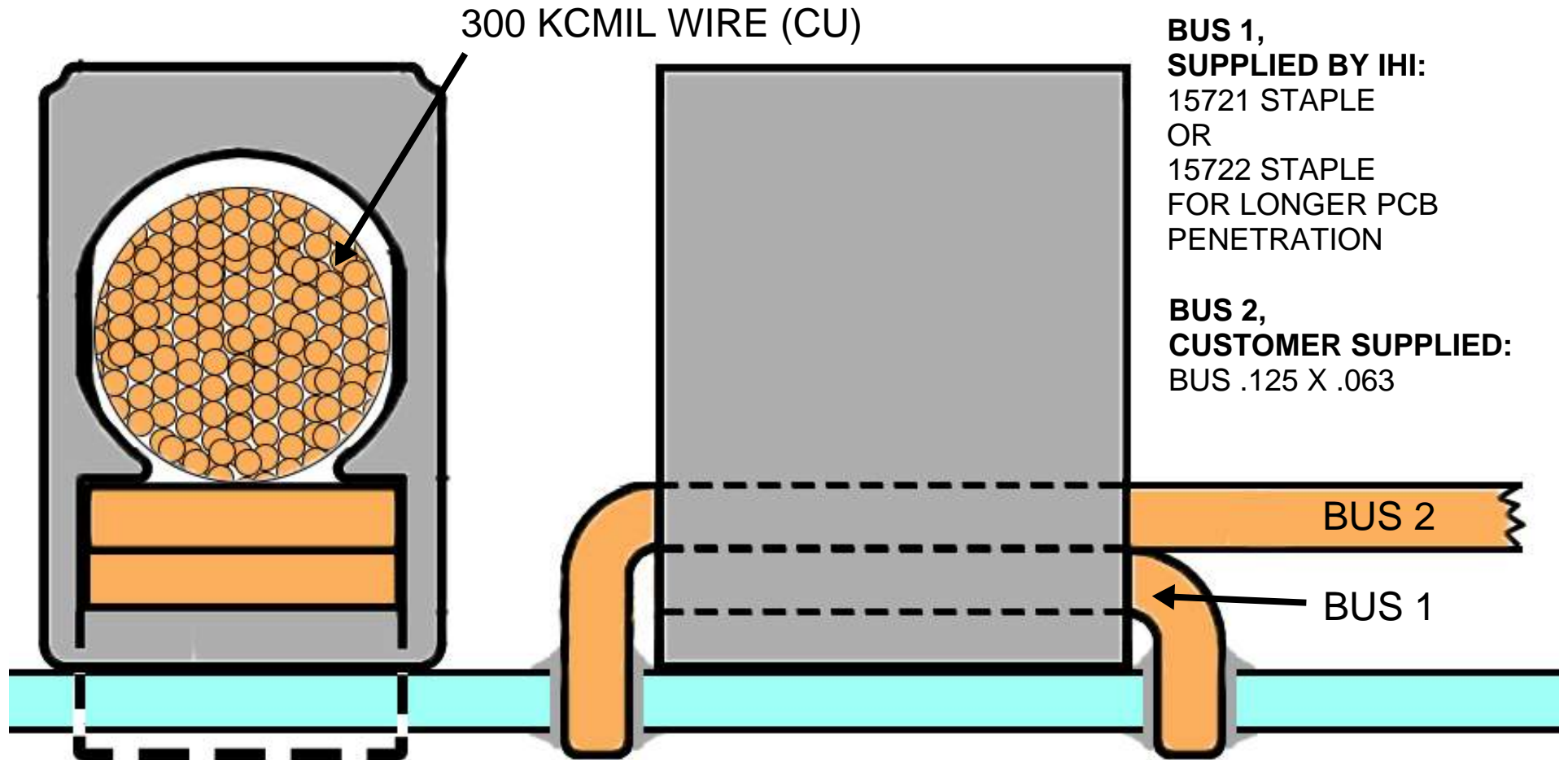
.250  
 [6.35]  
 HEX KEY DRIVE  
 13562 SCREW ALUM TIN PLATED



NOT FOR USE WHERE FAILURE CREATES A HAZARD TO HUMAN HEALTH OR SAFETY. ALL PRODUCTS ARE SUBJECT TO THIS FULL DISCLAIMER: <http://www.ihiconnectors.com/disclaimer.html> FOR FURTHER INFORMATION ON THE PROPER USE OF THIS PRODUCT IN SPECIFIC APPLICATIONS SEE [http://www.ihiconnectors.com/High\\_Amp\\_Wide\\_Trace\\_PCB\\_Wire\\_Connection.htm](http://www.ihiconnectors.com/High_Amp_Wide_Trace_PCB_Wire_Connection.htm) <http://www.ihiconnectors.com/Technical-Data-Installation.htm>

THIS DRAWING AND DESIGN ARE THE PROPERTY OF INTERNATIONAL HYDRAULICS, INC., CLEVELAND, OHIO, AND MAY NOT BE DUPLICATED, USED FOR THE BASIS OF DESIGN OR MANUFACTURE WITHOUT THE WRITTEN PERMISSION OF INTERNATIONAL HYDRAULICS, INC., CLEVELAND, OHIO.		<b>INTERNATIONAL HYDRAULICS, INC.</b>		
<b>GENERAL TOLERANCES</b> ±.015 (±0,39)		TITLE: <b>B300 BODY &amp; SCREW</b> <b>300-4 AWG BUS LUG</b>		
MATERIAL: ALUMINUM	SIZE: A	DRAWN BY: cridley	DWG NO.: B300(SALES)	REV: 2
FINISH: TIN PLATED	DATE: 12-20-2016		<b>IHI CONNECTORS</b>	

## B300 and B300-PCB Mounting Option



WHEN USED WITH A SINGLE PCB LEG THE UPPER BUSBAR NEEDS TO BE ANCHORED IN A WAY TO PREVENT THE LUG BODY FROM ROTATING WHEN THE WIRE BINDING SCREW IS TORQUED AND FROM SLIDING WHEN WIRE IS PULLED. FULL LINE CURRENT FROM WIRE IS SPLIT 50/50 BETWEEN TWO BUS LOADS, 1 AND 2.