

**IHI Connectors**  
 International Hydraulics Inc.  
 ihiconnectors.com™

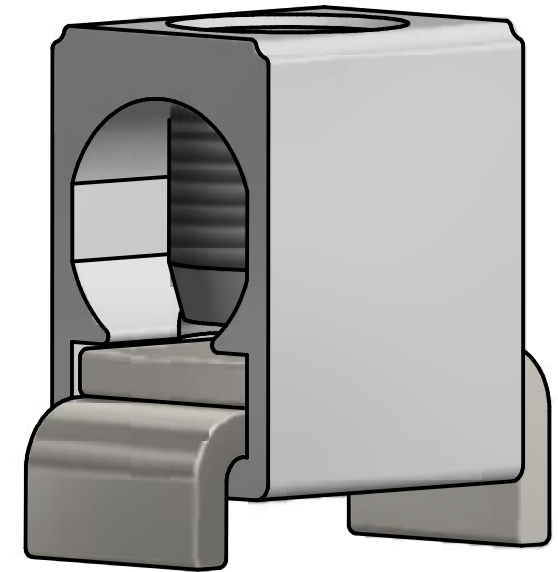
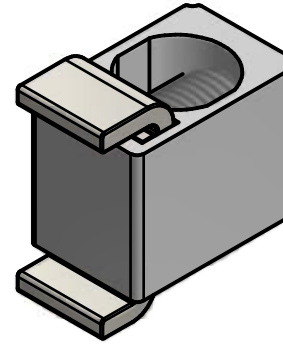
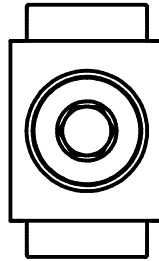


To be used with  
 "Conditions of Acceptability"

File E129884

Pressure Terminal  
 Connectors

UL Cat. No.  
**B300**



Wire Size Rated Torque  
 300 kcmil – 200 IN. LBS.  
 4 AWG

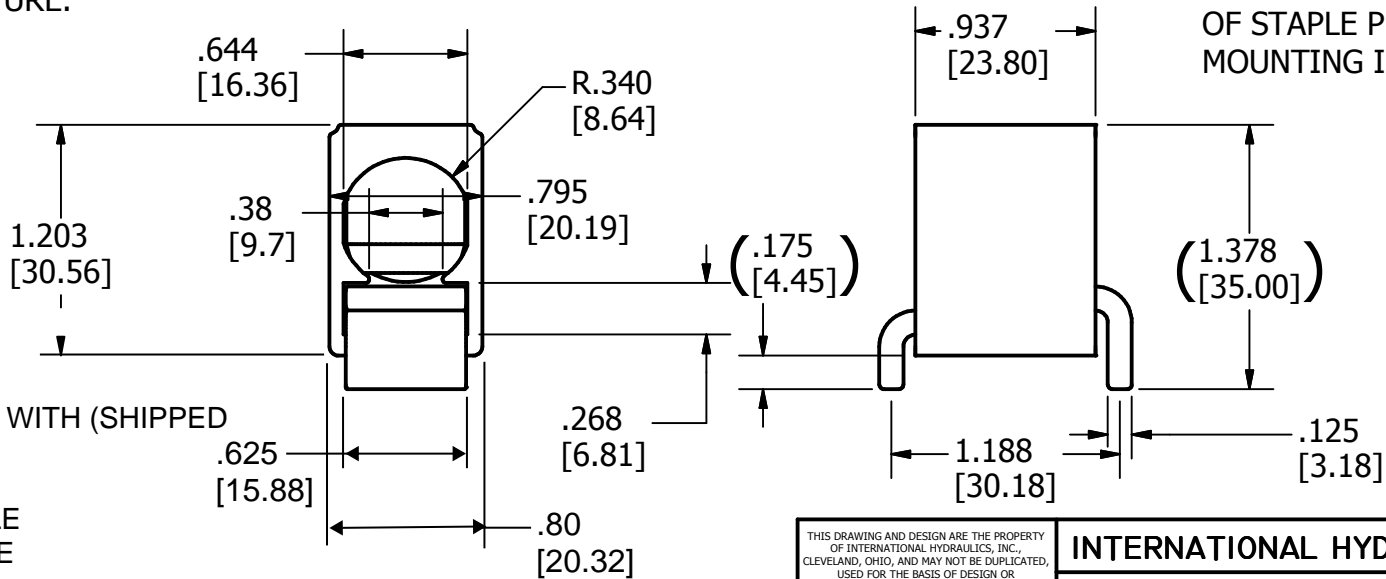
300 – 4 AL7CU

CONDITIONS OF ACCEPTABILITY ARE  
 NOMINALLY PROVIDED BY THE TURN  
 PREVENT STAPLES OF MINIMUM REQUIRED  
 CROSS SECTION IN CONJUNCTION WITH  
 ADEQUATE PCB STRUCTURE.

ALL PARTS  
 ASSEMBLED  
 WITH:  
 (1) 13562 SCREW

ORDER NUMBERS  
 1. B300-PCB-KIT KITTED WITH (SHIPPED  
 IN SEPARATE  
 BAG WITH LUGS):  
 (1) 15721 LOWER STAPLE  
 (1) 15722 UPPER STAPLE  
 OR  
 2. B300-PCB PURCHASED ASSEMBLED

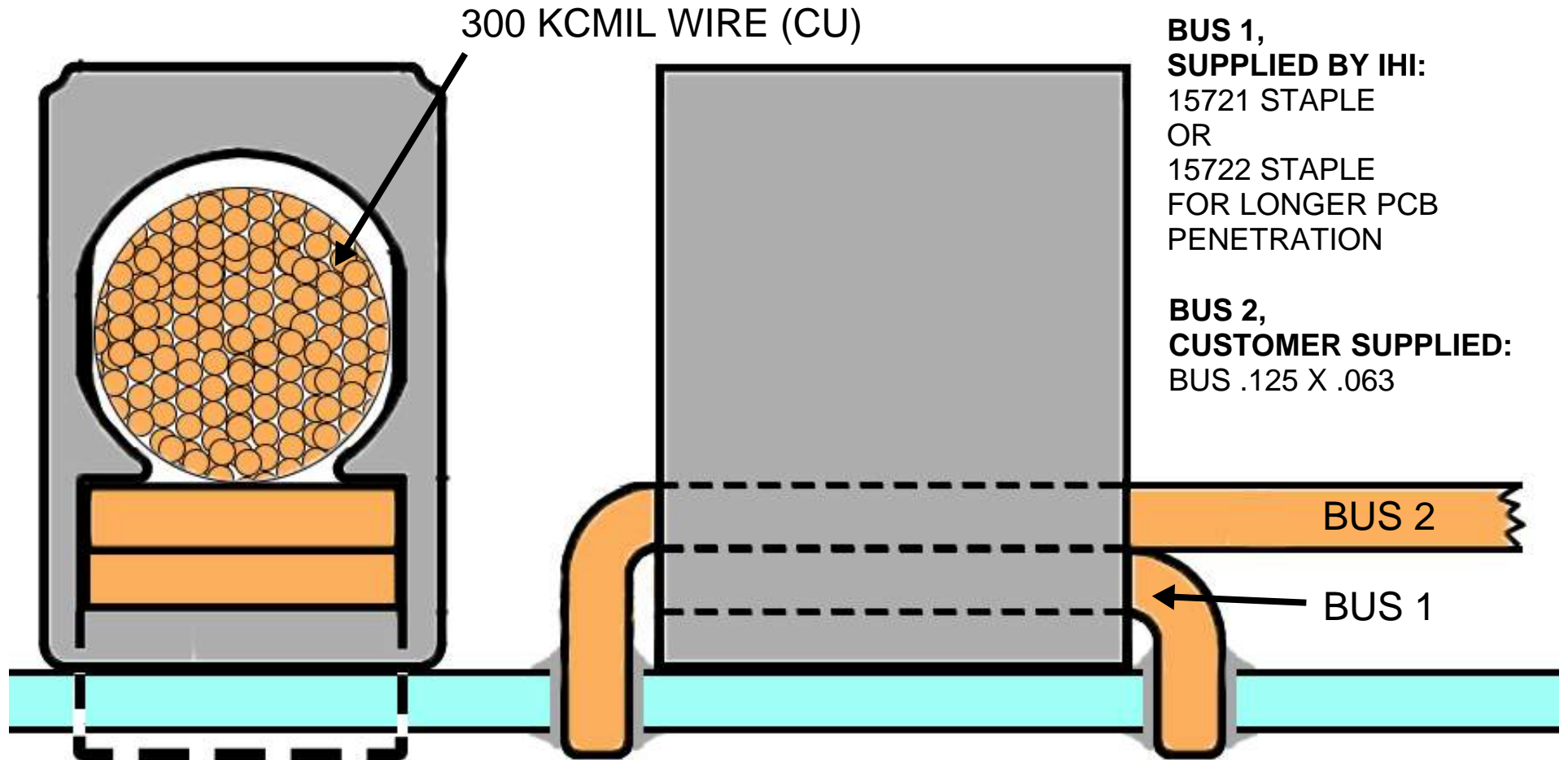
NOT FOR USE WHERE FAILURE CREATES A HAZARD TO HUMAN HEALTH OR SAFETY. ALL PRODUCTS ARE SUBJECT TO THIS FULL DISCLAIMER: <http://www.ihiconnectors.com/disclaimer.html> FOR FURTHER INFORMATION ON THE PROPER USE OF THIS PRODUCT IN SPECIFIC APPLICATIONS SEE [http://www.ihiconnectors.com/High\\_Amp\\_Wide\\_Trace\\_PCB\\_Wire\\_Connection.htm](http://www.ihiconnectors.com/High_Amp_Wide_Trace_PCB_Wire_Connection.htm) <http://www.ihiconnectors.com/Technical-Data-Installation.htm>



SHOWN AFTER ASSEMBLY  
 OF STAPLE PRIOR TO  
 MOUNTING IN PCB

THIS DRAWING AND DESIGN ARE THE PROPERTY OF INTERNATIONAL HYDRAULICS, INC., CLEVELAND, OHIO, AND MAY NOT BE DUPLICATED, USED FOR THE BASIS OF DESIGN OR MANUFACTURE WITHOUT THE WRITTEN PERMISSION OF INTERNATIONAL HYDRAULICS, INC., CLEVELAND, OHIO.		<b>INTERNATIONAL HYDRAULICS, INC.</b>		
		TITLE: <b>B300-PCB-KIT / B300-PCB</b>		
<b>GENERAL TOLERANCES</b> ±.015 (±0,39)		300-4 AWG PCB THT LUG		
MATERIAL: ALUMINUM AND COPPER	SIZE: A	DRAWN BY: cridley	DWG NO.:	REV:
FINISH: TIN PLATED	DATE: 12-20-2016	B300-PCB(SALES)		2
<b>IHI CONNECTORS</b>				

## B300 and B300-PCB Mounting Option



WHEN USED WITH A SINGLE PCB LEG THE UPPER BUSBAR NEEDS TO BE ANCHORED IN A WAY TO PREVENT THE LUG BODY FROM ROTATING WHEN THE WIRE BINDING SCREW IS TORQUED AND FROM SLIDING WHEN WIRE IS PULLED. FULL LINE CURRENT FROM WIRE IS SPLIT 50/50 BETWEEN TWO BUS LOADS, 1 AND 2.