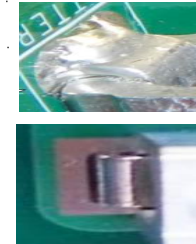
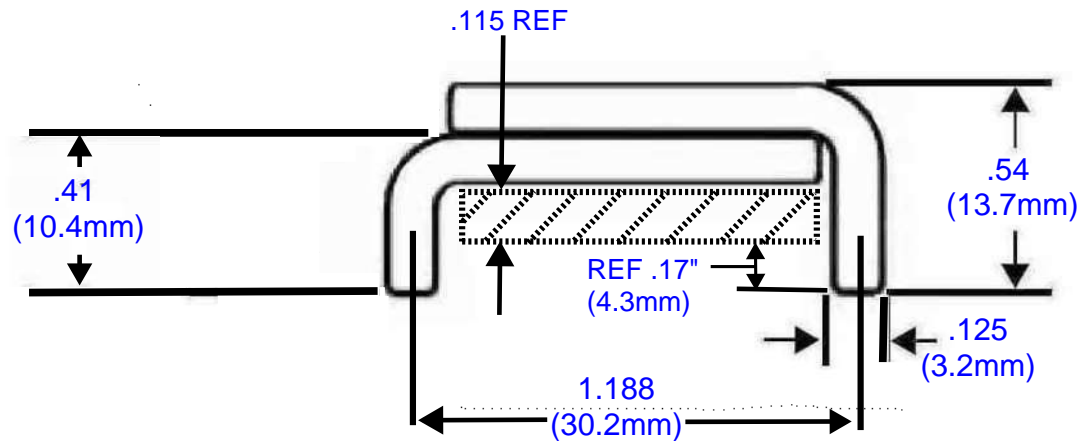
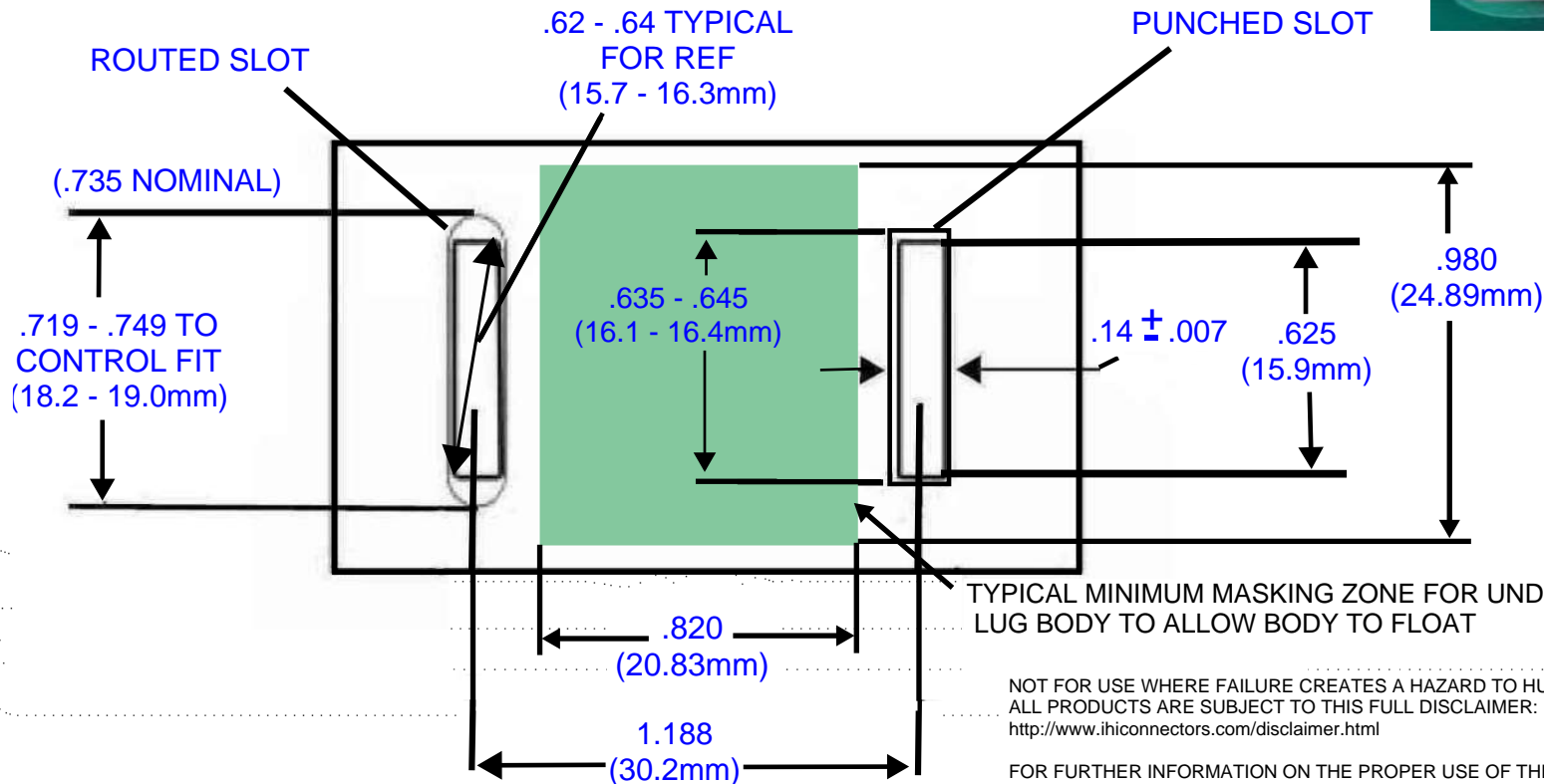
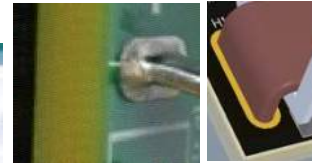


# B300-PCB STAPLE PAD LAYOUT

1. USER MAY VARY THE SLOT WIDTH AND SLOT LENGTH TO OBTAIN THE DESIRED FIT CHARACTERISTICS
2. STAPLE LEGS ARE SUPPLIED .125 X .625 ON 1.188 NOMINAL CENTERS WITH AN ALLOWANCE FOR ASSEMBLY VARIATION [3.18 mm x 15.88mm X 30.18mm]
3. PLATED THROUGH SLOTS ARE RECOMMENDED
4. BASE LINE TESTING AT 300AMPS. TESTING CARRIED OUT WITH 3 OUNCE DOUBLE SIDED .063 THICK FR4.



SOME EXAMPLES OF TYPICAL SOLDER PADS



TYPICAL MINIMUM MASKING ZONE FOR UNDERNEATH THE NON SOLDERED LUG BODY TO ALLOW BODY TO FLOAT

NOT FOR USE WHERE FAILURE CREATES A HAZARD TO HUMAN HEALTH OR SAFETY.  
ALL PRODUCTS ARE SUBJECT TO THIS FULL DISCLAIMER:  
<http://www.ihiconnectors.com/disclaimer.html>

FOR FURTHER INFORMATION ON THE PROPER USE OF THIS PRODUCT IN SPECIFIC APPLICATIONS SEE  
[http://www.ihiconnectors.com/High\\_Amp\\_Wide\\_Trace\\_PCB\\_Wire\\_Connection.html](http://www.ihiconnectors.com/High_Amp_Wide_Trace_PCB_Wire_Connection.html)  
<http://www.ihiconnectors.com/Technical-Data-Installation.htm>