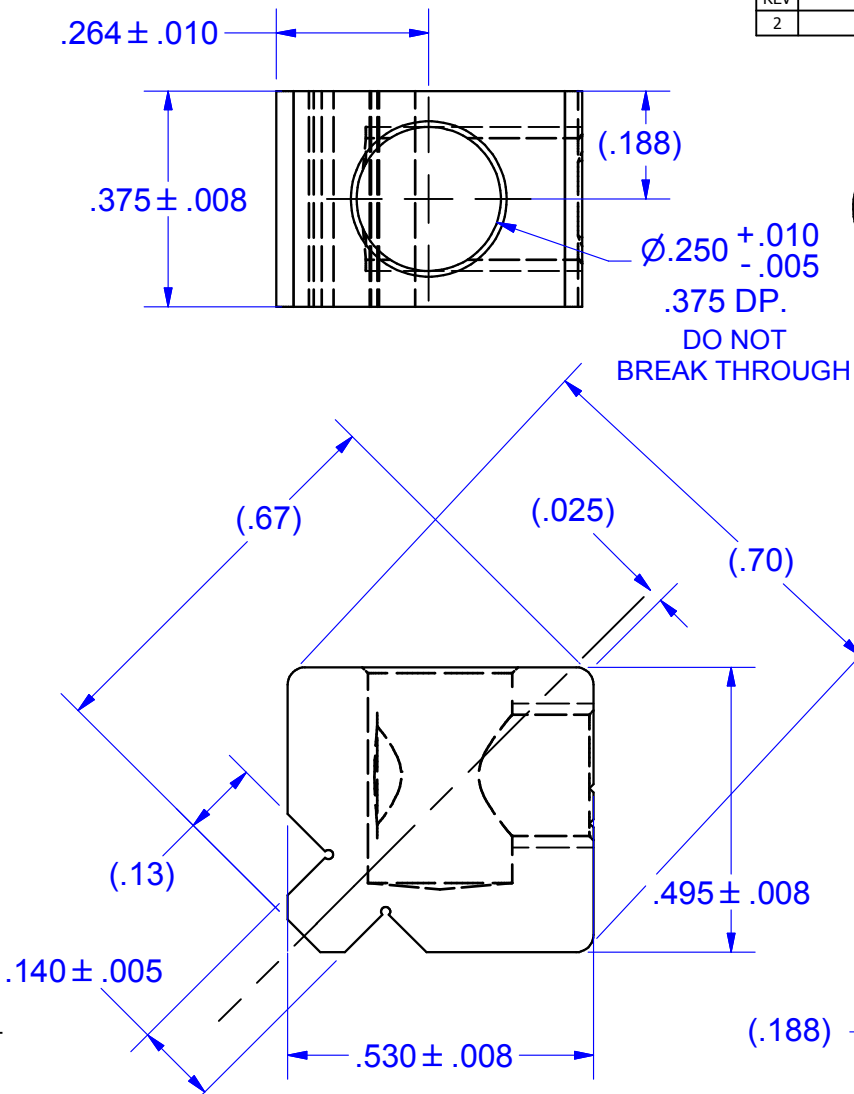


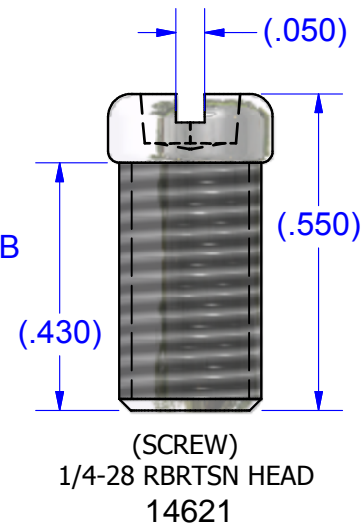
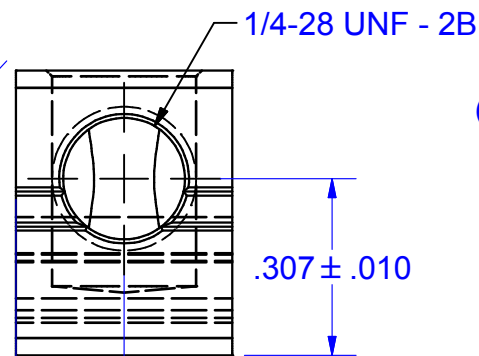
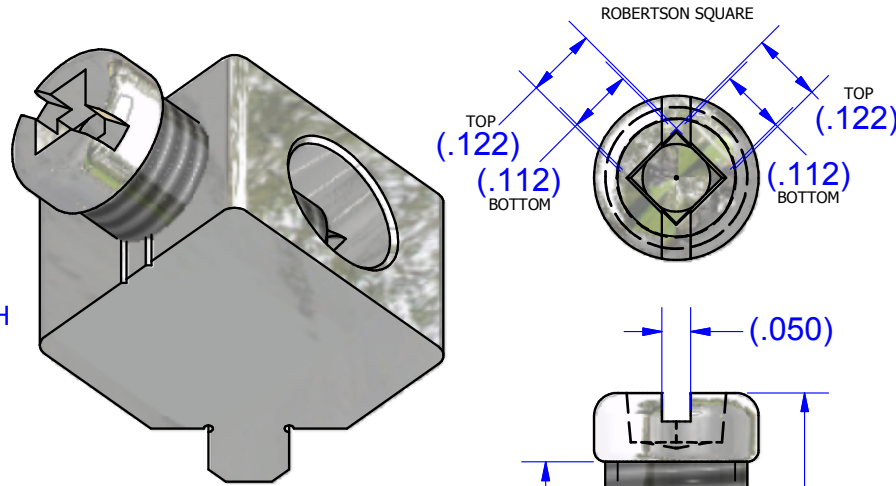
NOT FOR USE WHERE FAILURE CREATES A HAZARD TO HUMAN HEALTH OR SAFETY.
ALL PRODUCTS ARE SUBJECT TO THIS FULL DISCLAIMER: <http://www.ihconnectors.com/disclaimer.html>

FOR FURTHER INFORMATION ON THE PROPER USE OF THIS PRODUCT IN SPECIFIC APPLICATIONS SEE
<http://www.ihconnectors.com/GuideToFlexFlexibleFineStrandedWireCableMechanicalLugsFAQ.html>
<http://ihconnectors.com/Precautions-when-using-SMT.pdf>
http://www.ihconnectors.com/FAQ_SMT_SMD_High_CurrentPCB_Terminal_LugsSolderCreep.htm
http://www.ihconnectors.com/High_Amp_Wide_Trace_PCB_Wire_Connection.html
<http://www.ihconnectors.com/Technical-Data-Installation.htm>

B4A-PCB-45-NS USER TORQUE IS USER CONTROLLED



REVISION HISTORY			
REV	DESCRIPTION	DATE	APPROVED
2	REDRAWN IN INVENTOR FORMAT ALSO ADD 14621 SCREW REF. INFO	7/1/2011	TDS



- B4A-PCB-45-RS (SQUARE/SLOT ROBERTSON)
- B4A-PCB-45-HEX (1/8" HEX SKT. SET SCREW)
- B4A-PCB-45-HEX-M (3mm HEX SKT. SET SCREW)
- B4A-PCB-45 (SLOTTED SET SCREW)
- B4A-PCB-SMT (MOUNTED ON FLAT SIDE, ANY SCREW CHOICE)

Wire Binding Screw Recommended Torque Chart for Wire Stranding Classes Listed in UL486A-B Code Wires*			
AWG 4-14 (mm ² 16-2.5)			
AWG	mm ²	in-lb	N-M
4	-	35	3.95
-	16		
6	-		
8	-	25	2.82
-	10		
10	-		
12	-	20	2.26
-	6		
14	-		
-	4		
-	2.5		

*For parts with No Screw (i.e. XXX-PCB-NS) Recommended Torque is User Controlled. Wire binding screw torque not applicable to ring lug clamping screws. Suitable torques for flex wire may be different than listed.

- NOTES:**
1. FINISH: TIN PLATE FOR SOLDERING
 2. PART IS NOT UL/CSA LISTED/CERTIFIED (SEE PART B2A-PCB OR B12-PCB FOR LISTED PARTS) BUT IS CAPABLE OF PASSING UL686
 3. FOR .06 PCB MIN. BOARD THICKNESS
 4. USE ROUTED SLOT IN PCB FOR .140 FOOT, ALL FINAL PCB SPECS BASED ON BUYER TESTING AND APPROVAL
 5. STANDARD PART HAS #2 ROBERTSON SQUARE STYLE STEEL SCREW INSTALLED.
 6. ACCEPTS COPPER OF ALUMINUM WIRE (SOLID OR STRANDED)
 7. RECOMMEND THE USE OF FERRULES FOR SMALL OR FINE STRANDED WIRE

THIS DRAWING AND DESIGN ARE THE PROPERTY OF INTERNATIONAL HYDRAULICS, INC., CLEVELAND, OHIO, AND MAY NOT BE DUPLICATED, USED FOR THE BASIS OF DESIGN OR MANUFACTURE WITHOUT THE WRITTEN PERMISSION OF INTERNATIONAL HYDRAULICS, INC., CLEVELAND, OHIO.	
GENERAL TOLERANCES ±.015 (±0.038)	
MATERIAL: 6061-T6 XBXA-PCB-45	FINISH: SEE NOTE

INTERNATIONAL HYDRAULICS, INC.			
TITLE: PCB 45 COLLAR AWG 4-18* CONNECTOR W/PRINTED CIRCUIT BOARD TAB			
SCALE: 3:1	DRAWN BY: TDS	DWG NO.: B4A-PCB-45-(SALES)	REV: 2
DATE: 7/1/11	THIS IS A CAD DRAWING, DO NOT MANUALLY REVISE		