

Ring Lug Mount (RLM)

Screw Tightening Torques

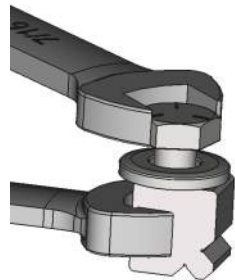
All torques in inch-lbs. (Divide by 8.85 for N-m)

When Using	THT Mounts		SMT Mount	Lug body Wrench Size
	Min	Max		
-RLM			##	3/8" (9.5mm)
B4A-PCB	35	37-80**	##	

(**) Use of an open ended wrench on the lug to counter the applied torque is recommended in case the soldered mount to PCB is compromised by excessive torque applied through to the soldered PCB joint.

(##) All SMT mounts require that the torque applied should be established by purchaser using data on the strength of the SMT joint in the worst case.

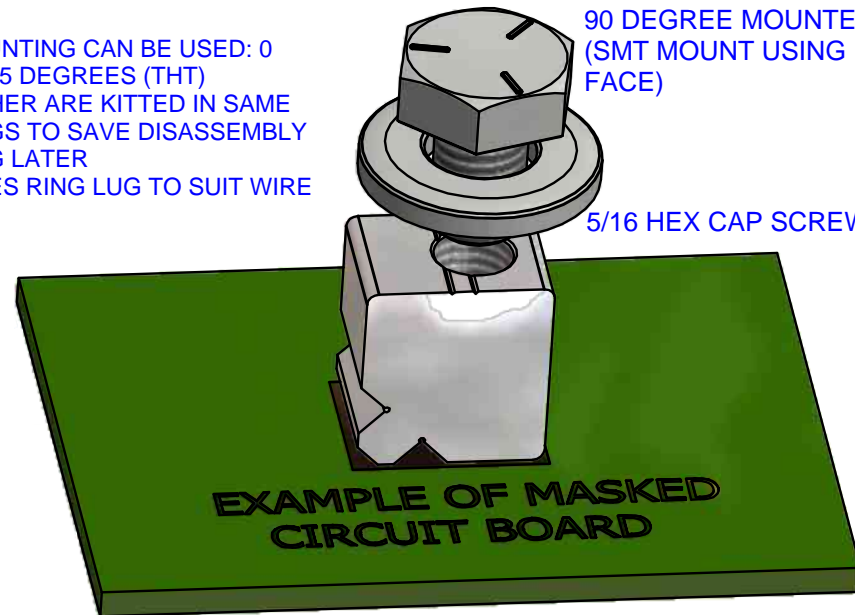
In addition, use of an open ended wrench on the SMT mounted lug to counter the applied torque is recommended in case the soldered mount to PCB is compromised by excessive torque applied through to the soldered PCB joint.



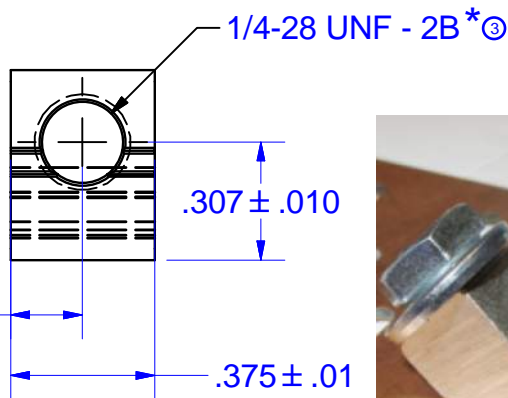
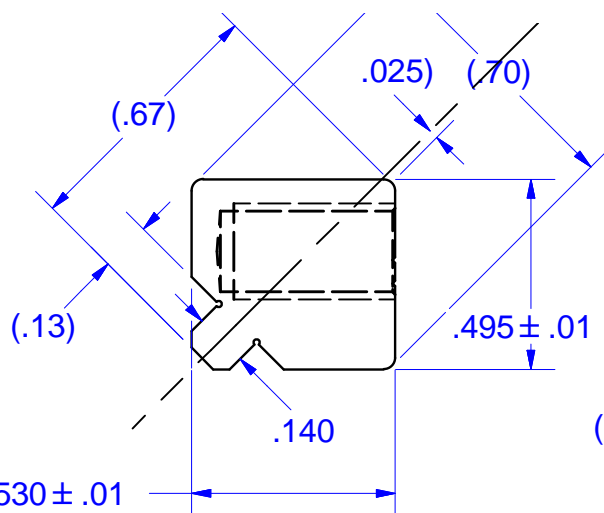
1. TWO TYPES OF MOUNTING CAN BE USED: 0 DEGREES (SMT) AND 45 DEGREES (THT)
2. CAP SCREW & WASHER ARE KITTED IN SAME BOX IN SEPERATE BAGS TO SAVE DISASSEMBLY FOR ADDING RING LUG LATER
3. CUSTOMER SUPPLIES RING LUG TO SUIT WIRE SIZE NEEDED.

90 DEGREE MOUNTED (SMT MOUNT USING FACE)

5/16 HEX CAP SCREW



EXAMPLE OF MASKED CIRCUIT BOARD



*DUE TO THREAD LENGTH & PLATING VARIATION, PD MAY BE .2258-.2321.

RUNNING TORQUE FOR SCREWS REFERENCE 1-5 In-Lb



45 DEGREE MOUNTED (THT MOUNT USING CORNER FOOT)



NOTES:

1. FINISH: TIN PLATE FOR SOLDERING
 2. PART IS NOT UL/CSA LISTED/CERTIFIED BUT IS CAPABLE OF PASSING UL486 IF PROPERLY IMPLEMENTED ON PCB
 3. FOR .06" - .10" BOARD THICKNESS
 4. USE ROUTED SLOT IN PCB FOR .140 FOOT, ALL FINAL PCB SPECS BASED ON BUYER TESTING AND APPROVAL
 5. STANDARD PART HAS 1 HEX SCREW & 1 WASHER KITTED.
- NOT FOR USE WHERE FAILURE CREATES A HAZARD TO HUMAN HEALTH OR SAFETY. ALL PRODUCTS ARE SUBJECT TO THIS FULL DISCLAIMER: <http://www.ihconnectors.com/disclaimer.html>

FOR FURTHER INFORMATION ON THE PROPER USE OF THIS PRODUCT IN SPECIFIC APPLICATIONS SEE
<http://www.ihconnectors.com/GuideToFlexFlexibleFineStrandedWireCableMechanicalLugsFAQ.html>
<http://ihconnectors.com/Precautions-when-using-SMT.pdf>
http://www.ihconnectors.com/FAQ_SMT_SMD_High_CurrentPCB_Terminal_LugsSolderCreep.htm
http://www.ihconnectors.com/High_Amp_Wide_Trace_PCB_Wire_Connection.html
<http://www.ihconnectors.com/Technical-Data-Installation.htm>

THIS DRAWING AND DESIGN ARE THE PROPERTY OF INTERNATIONAL HYDRAULICS, INC., CLEVELAND, OHIO, AND MAY NOT BE DUPLICATED, USED FOR THE BASIS OF DESIGN OR MANUFACTURE WITHOUT THE WRITTEN PERMISSION OF INTERNATIONAL HYDRAULICS, INC., CLEVELAND, OHIO.

GENERAL TOLERANCES
-.015 (-0.038)

MATERIAL: 6061-T6
XBXA-PCB-45

FINISH:
SEE NOTE

INTERNATIONAL HYDRAULICS, INC.

TITLE: RING LUG MOUNT (RLM) CONNECTOR W/PRINTED CIRCUIT BOARD TAB

SCALE: 3:1
DRAWN BY: TDS
DWG NO.: B4A-PCB-45-RLM (WEB)
REV: 3

DATE: 7/1/11
THIS IS A CAD DRAWING, DO NOT MANUALLY REVISE