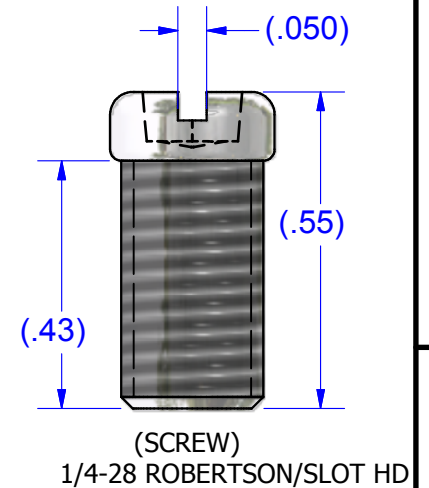
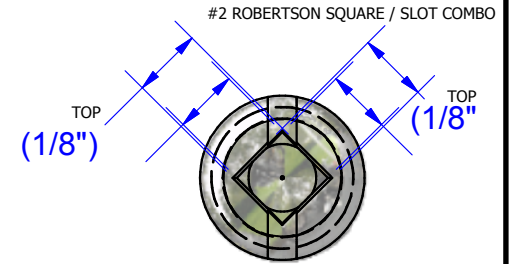
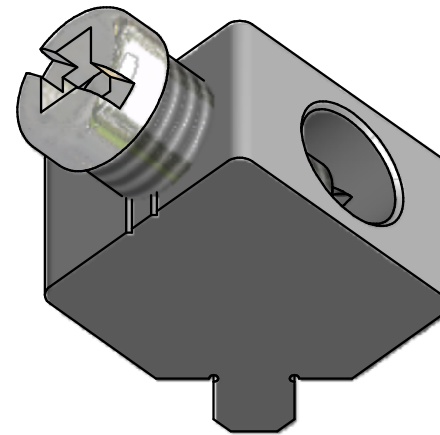


EVISION HISTORY			
REV	DESCRIPTION	DATE	APPROVED
2	REDRAWN IN INVENTOR FORMAT ALSO ADD 14621 SCREW REF. INFO.	7/1/2011	TDS



**NOTES:**

1. FINISH: TIN PLATE FOR SOLDERING -PROPRIETARY PROCESS
2. PART IS NOT UL/CSA LISTED/CERTIFIED (SEE PART B2A-PCB OR B12-PCB FOR LISTED PARTS) BUT IS CAPABLE OF PASSING UL486 AS PART OF AN APPROVED ASSEMBLY.
3. FOR .06 PCB MIN. BOARD THICKNESS. PLATED THROUGH HOLES RECOMMENDED.
4. USE ROUTED SLOT IN PCB FOR .140 FOOT, ALL FINAL PCB SPECS BASED ON BUYER TESTING AND APPROVAL. SEE WAVE SOLDER CHART FOR TYPICAL PROCESS.
5. STANDARD PART HAS #2 ROBERTSON SQUARE STYLE STEEL SCREW INSTALLED.
6. ACCEPTS COPPER OR ALUMINUM WIRE (SOLID OR STRANDED)

THIS DRAWING AND DESIGN ARE THE PROPERTY OF INTERNATIONAL HYDRAULICS, INC., CLEVELAND, OHIO, AND MAY NOT BE DUPLICATED, USED FOR THE BASIS OF DESIGN OR MANUFACTURE WITHOUT THE WRITTEN PERMISSION OF INTERNATIONAL HYDRAULICS, INC., CLEVELAND, OHIO		INTERNATIONAL HYDRAULICS, INC.	
GENERAL TOLERANCES ±.015 (±0.038)		TITLE: PCB 45 COLLAR AWG 6-18 CONNECTOR W/PRINTED CIRCUIT BOARD TAB	
MATERIAL: 6061-T6 XBXA-PCB-45	SCALE: 3:1	DRAWN BY: CDMR	DWG NO.: B6A-PCB-45-(WEB)
FINISH: SEE NOTE	DATE: 8/8/11	REV: 2a	THIS IS A CAD DRAWING, DO NOT MANUALLY REVISE