

Ring Lug Mount (RLM) Screw Tightening Torques

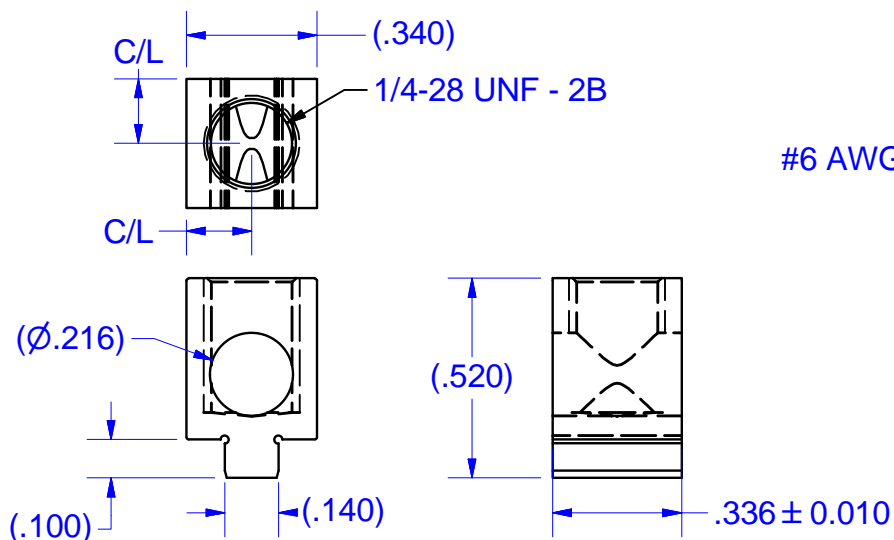
All torques in inch-lbs. (Divide by 8.85 for N-m)

When Using	THT Mounts		SMT Mount	Lug body Wrench Size
	Min	Max		
-RLM			##	11/32" (9mm)
B6A-PCB	35	37-80**		

(**) Use of an open ended wrench on the lug to counter the applied torque is recommended in case the soldered mount to PCB is compromised by excessive torque applied through to the soldered PCB joint.

(##) All SMT mounts require that the torque applied should be established by purchaser using data on the strength of the SMT joint in the worst case.

In addition, use of an open ended wrench on the SMT mounted lug to counter the applied torque is recommended in case the soldered mount to PCB is compromised by excessive torque applied through to the soldered PCB joint.

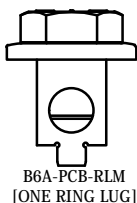
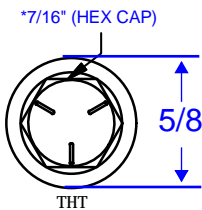


NOTES:

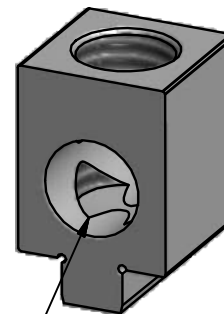
1. FINISH: TIN PLATE FOR SOLDERING
2. PART IS NOT UL/CSA LISTED/CERTIFIED (SEE PART B2A-PCB OR B12-PCB FOR LISTED PARTS) BUT IS CAPABLE OF PASSING UL486
3. FOR .06 PCB MIN. BOARD THICKNESS
4. USE ROUTED SLOT IN PCB FOR .140 FOOT, ALL FINAL PCB SPECS BASED ON BUYER TESTING AND APPROVAL
5. ACCEPTS COPPER OR ALUMINUM WIRE (SOLID OR STRANDED)
6. RING LUG MOUNT PARTS ARE SUPPLIED WITH HARDWARE KITTED. NOT ASSEMBLED
7. FERRULES ARE RECOMMENDED FOR FINE AND STRANDED SMALL WIRES
8. SMT MOUNTED VERSIONS MOUNTED AT 90° ON SIDE

REVISION HISTORY			
REV	DESCRIPTION	DATE	APPROVED
1	DRAWN IN INVENTOR	11/15/2011	TIM SMITH

*FOR USE WITH CUSTOMER SUPPLIED RING LUGS
1/4"/6MM BOLT SIZE



NO MARKING
REQUIRED



#6 AWG TO #14/16*/18*



NOT FOR USE WHERE FAILURE CREATES A HAZARD TO HUMAN HEALTH OR SAFETY.
ALL PRODUCTS ARE SUBJECT TO THIS FULL DISCLAIMER:

<http://www.ihiconnectors.com/disclaimer.html>
FOR FURTHER INFORMATION ON THE PROPER USE OF THIS PRODUCT IN SPECIFIC APPLICATIONS SEE
[ihiconnectors.com/GuideToFlexibleFineStrandedWireCableMechanicalLugsFAQ.html](http://www.ihiconnectors.com/GuideToFlexibleFineStrandedWireCableMechanicalLugsFAQ.html)
[ihiconnectors.com/Precautions-when-using-SMT.pdf](http://www.ihiconnectors.com/Precautions-when-using-SMT.pdf)
[ihiconnectors.com/FAQ_SMT_SMD_High_CurrentPCB_Terminal_LugsSolderCreep.htm](http://www.ihiconnectors.com/FAQ_SMT_SMD_High_CurrentPCB_Terminal_LugsSolderCreep.htm)
[ihiconnectors.com/NOTESonPCBPrintLayouts\(SMT-SMD-Mode\).pdf](http://www.ihiconnectors.com/NOTESonPCBPrintLayouts(SMT-SMD-Mode).pdf)
[ihiconnectors.com/High_Amp_Wide_Trace_PCB_Wire_Connection.htm](http://www.ihiconnectors.com/High_Amp_Wide_Trace_PCB_Wire_Connection.htm)
[ihiconnectors.com/Technical-Data-Installation.htm](http://www.ihiconnectors.com/Technical-Data-Installation.htm)

THIS DRAWING AND DESIGN ARE THE PROPERTY OF INTERNATIONAL HYDRAULICS, INC., CLEVELAND, OHIO, AND MAY NOT BE DUPLICATED, USED FOR THE BASIS OF DESIGN OR MANUFACTURE WITHOUT THE WRITTEN PERMISSION OF INTERNATIONAL HYDRAULICS, INC., CLEVELAND, OHIO.

INTERNATIONAL HYDRAULICS, INC.

GENERAL TOLERANCES		TITLE:		
- .015		RING LUG MOUNT PCB TERMINAL 65 AMP, THT FOOT MOUNTED		
SALES PRINT				
MATERIAL:	6061-T6 (13521)	SIZE:	DRAWN BY:	DWG NO.:
FINISH:	SEE NOTE	DATE:	TDS	B6A-PCB-RLM
				REV: 2
				THIS IS A CAD DRAWING, DO NOT MANUALLY REVISE