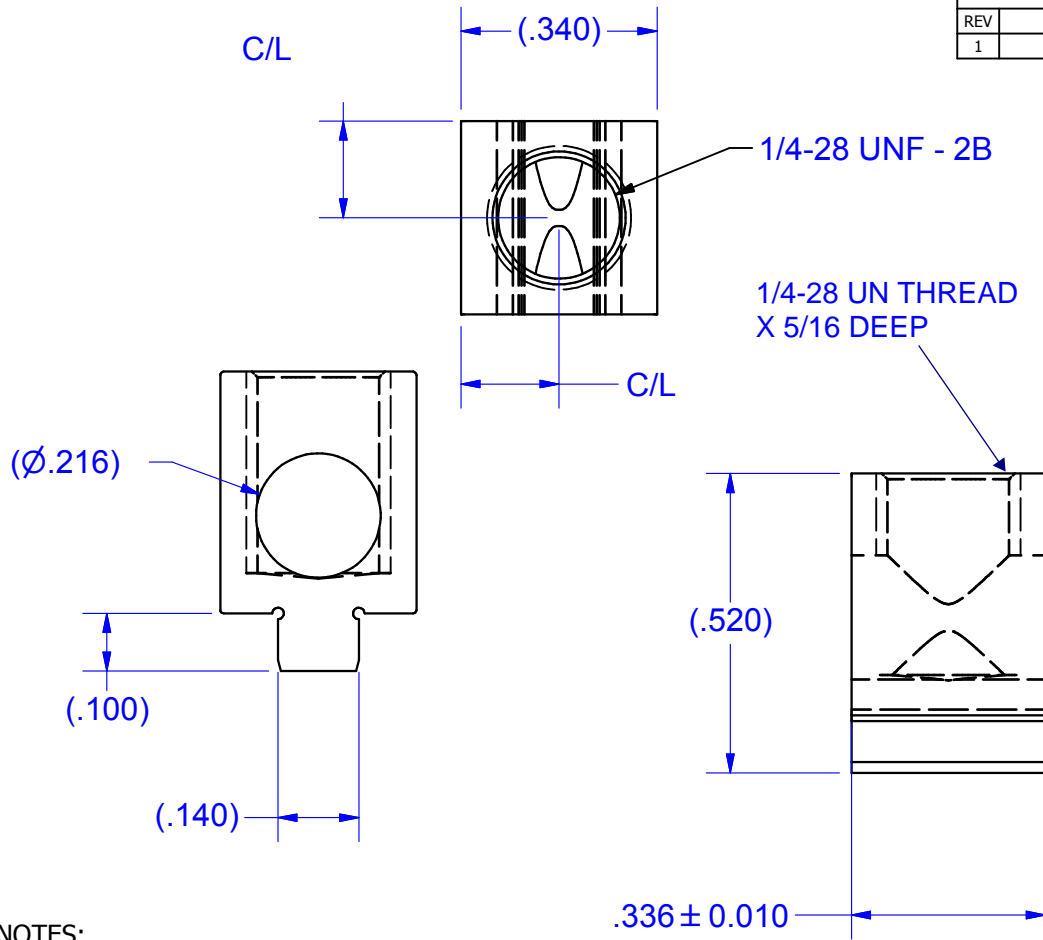
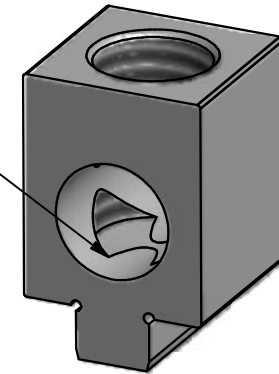


REVISION HISTORY			
REV	DESCRIPTION	DATE	APPROVED
1	DRAWN IN INVENTOR	11/15/2011	TIM SMITH



BODY ONLY VERSION: RING LUG BOLT/WASHER OR WIRE BINOING SCREW TO BE SUPPLIED BY CUSTOMER



AWG #6 MAX WIRE SIZE

WIRE RANGE DEPENDS ON SCREW TYPE

USER TORQUE IS USER CONTROLLED

NO MARKING REQUIRED

NOTES:

1. FINISH: TIN PLATE FOR SOLDERING
2. PART IS NOT UL/CSA LISTED/CERTIFIED (SEE PART B2A-PCB OR B12-PCB FOR LISTED PARTS) BUT IS CAPABLE OF PASSING UL486 SUBJECT TO HARDWARE.
3. FOR .06 PCB MIN. BOARD THICKNESS, MAX 0.09" THICK
4. USE ROUTED SLOT IN PCB FOR .140 FOOT, ALL FINAL PCB SPECS BASED ON BUYER TESTING AND APPROVAL
5. RECOMMEND USE OF FERRULE FOR SMALL OR FINE STRANDED WIRE.

NOT FOR USE WHERE FAILURE CREATES A HAZARD TO HUMAN HEALTH OR SAFETY. ALL PRODUCTS ARE SUBJECT TO THIS FULL DISCLAIMER: <http://www.ihconnectors.com/disclaimer.html>

FOR FURTHER INFORMATION ON THE PROPER USE OF THIS PRODUCT IN SPECIFIC APPLICATIONS SEE ihconnectors.com/GuideToFlexFlexibleFineStrandedWireCableMechanicalLugsFAQ.html
ihconnectors.com/Precautions-when-using-SMT.pdf
ihconnectors.com/FAQ_SMT_SMD_High_CurrentPCB_Terminal_LugsSolderCreep.htm
[ihconnectors.com/NOTESonPCBFootPrintLayouts\(SMT-SMD-Mode\).pdf](http://ihconnectors.com/NOTESonPCBFootPrintLayouts(SMT-SMD-Mode).pdf)
ihconnectors.com/High_Amp_Wide_Trace_PCB_Wire_Connection.html
ihconnectors.com/Technical-Data-Installation.htm

THIS DRAWING AND DESIGN ARE THE PROPERTY OF INTERNATIONAL HYDRAULICS, INC., CLEVELAND, OHIO, AND MAY NOT BE DUPLICATED, USED FOR THE BASIS OF DESIGN OR MANUFACTURE WITHOUT THE WRITTEN PERMISSION OF INTERNATIONAL HYDRAULICS, INC., CLEVELAND, OHIO.		INTERNATIONAL HYDRAULICS, INC.	
UNLESS OTHERWISE SPECIFIED: GENERAL TOLERANCES ±.015 (±0,038mm)		TITLE: AWG 6-14 PCB TERMINAL 65 AMP, THT FOOT MOUNTED SALES PRINT	
MATERIAL: 6061-T6 (13521)	SIZE:	DRAWN BY: TDS	DWG NO.: B6A-PCB-RS-NS
FINISH: SEE NOTE	DATE: 11/14/11	THIS IS A CAD DRAWING, DO NOT MANUALLY REVISE	