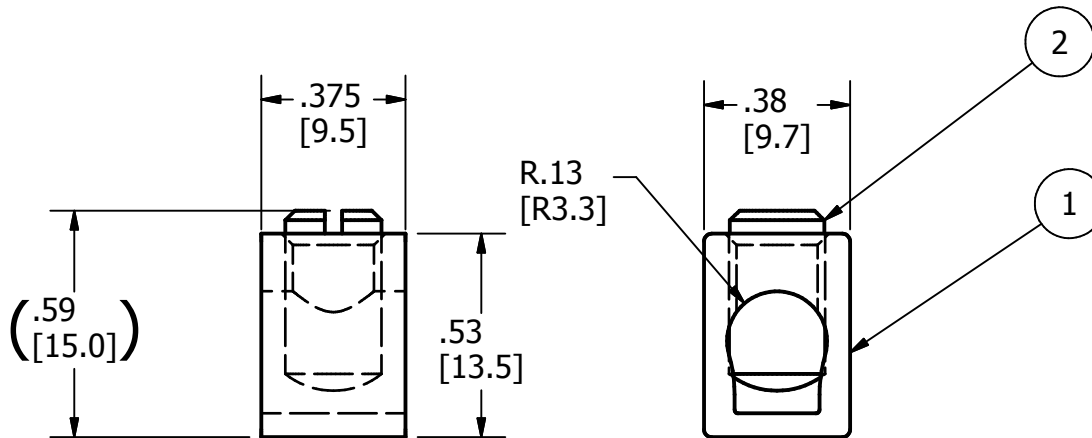
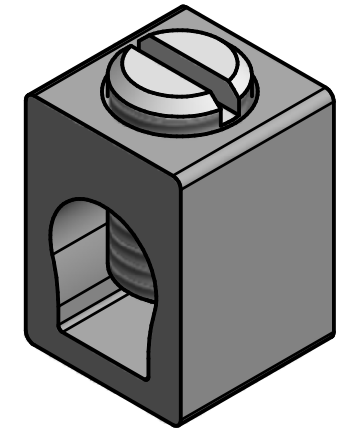
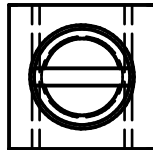


**PARTS MARKED**

B6B  
 IHI LOGO  
 CSA LOGO  
 UL RECOGNITION LOGO  
 6-14 CU7  
 6-8 AL

**BOM**

1. B6B 6061-T6 ALUMINUM BODY TIN PLATED (Sn/Cu)
2. 14216-LF STEEL SCREW 1/4-28 X 15/32 [ X12mm] ZINC CHROMATE PLATED (Cr/Zn)



**CONDITIONS OF ACCEPTABILITY**

1. 0.200" WIDE COPPER BUS X MIN. 0.032" THICK  
75C TEMP RATING
2. THE CONNECTOR MUST BE PREVENTED FROM TURNING BY CLOSE FITTING WALLS OR EQUIVALENT (EX. A RIGID BUS)

**IHI Connectors**  
 International Hydraulics Inc.  
 ihiconnectors.com™



To be used with  
 "Conditions of Acceptability"

Wire Size	Rated Torque
6 AWG	35 IN. LBS.
8 AWG	25 IN. LBS.
10-14 AWG	20 IN. LBS.

**6-14 CU7  
 6-8 AL7**

**UL File E129884**

**Pressure Terminal  
 Connectors  
 NRTL Cat. No.  
 B6B**

**75°C**

NOT FOR USE WHERE FAILURE CREATES A HAZARD TO HUMAN HEALTH OR SAFETY.  
 ALL PRODUCTS ARE SUBJECT TO THIS FULL DISCLAIMER:  
<http://www.ihiconnectors.com/disclaimer.html>

FOR FURTHER INFORMATION ON THE PROPER USE OF THIS PRODUCT IN SPECIFIC APPLICATIONS SEE

[http://www.ihiconnectors.com/High\\_Amp\\_Wide\\_Trace\\_PCB\\_Wire\\_Connection.html](http://www.ihiconnectors.com/High_Amp_Wide_Trace_PCB_Wire_Connection.html)

<http://www.ihiconnectors.com/Technical-Data-Installation.htm>

<small>THIS DRAWING AND DESIGN ARE THE PROPERTY OF INTERNATIONAL HYDRAULICS, INC., CLEVELAND, OHIO, AND MAY NOT BE DUPLICATED, USED FOR THE BASIS OF DESIGN OR MANUFACTURE WITHOUT THE WRITTEN PERMISSION OF INTERNATIONAL HYDRAULICS, INC., CLEVELAND, OHIO.</small>		<b>IHI CONNECTORS</b> INTERNATIONAL HYDRAULICS, INC.	
<b>GENERAL TOLERANCES</b> ±.015 (±0,39)		<b>TITLE:</b> B6B 65AMP CUAL OEM LUG UL RECOGNIZED CSA CERT'D	
<b>MATERIAL:</b> 6061-T6, STEEL SCREW	<b>SIZE:</b> A	<b>DRAWN BY:</b> cridley	<b>DWG NO.:</b> B6B(SALES)
<b>FINISH:</b> TIN PLATED SOLDERABLE	<b>DATE:</b> 6-18-2019	<b>REV:</b> 0	