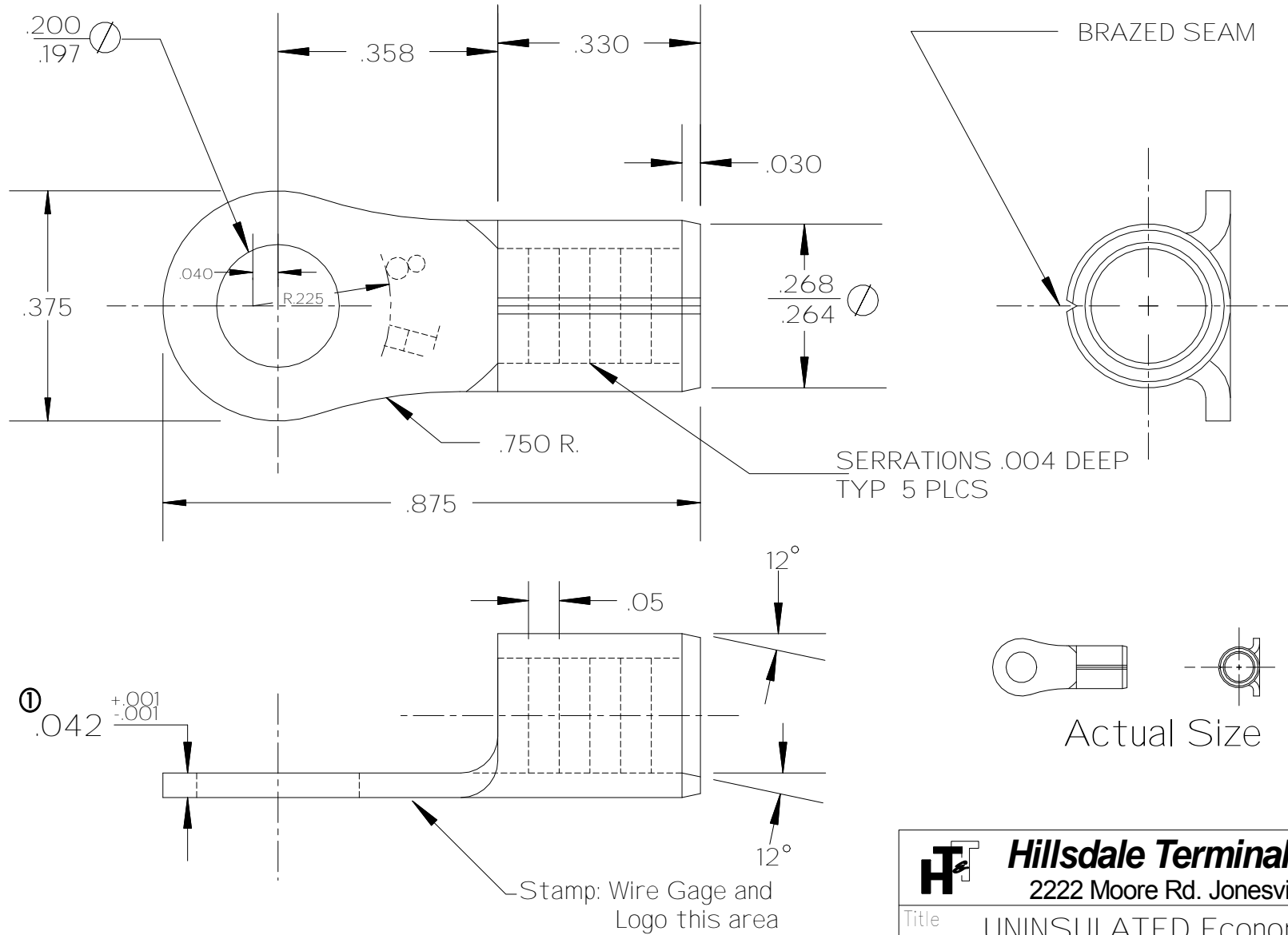



Num	Date	By	Revision Note
1	06/01/07	jim	was .044



1. Material: Alloy 110 Copper-1/2 Hard Temper
2. Finish: Flash Electro Tin Plate

 Hillsdale Terminal & Tools 2222 Moore Rd. Jonesville Mi. 49250			
		Title UNINSULATED Economy 8 GA. #10 STUD RING	
Drawn by	J. Condon	Date	09/03/08
Checked by		Scale	4X
Material	See Notes	Drawing #	10609