

**LugsDirect.com**

Factory Direct Lugs At Factory Direct Prices

## Multi-Wire Neutral Power Bars

Power collection (solar), Power distribution, Ground Bar, Floating Ground bar, Neutral Bar.

Multi-purpose, compact, 3-tier, 600V, 2000V, multi-wire power and ground and neutral lug for panel builders UL508A. Bus mounted or optional insulated stand-off mounted, SA1.1 Listed category ZMVV. Usable with UL508A table SA1.1 Listed Category QEUY2 standoffs. Modular design allows: 24 wire and 36 wire versions 4-14 AWG, 85A per wire NEC rated with 75C wire, 310A 1x350kcmil copper wire, 620A 2x 350kcmil copper wire, Three tier design provides compact footprint to save panel space, Lug rated under UL486A-B for up to 2000V uninsulated, Supplied with or without 350kcmil-6 line wire lug, 1 line lug per kit (24S4-3) and 1 or 2 line lugs per kit (36S4-3), Includes anti-rotation feature for line wire lug(s), Line lug mounting hardware included in kit, Two types of customer mounting bolt configuration possible: bolts with and without nuts. Optional standoffs insulators for wide range of QEUY2 rated voltages. Slotted steel zinc plated 4014 binding screws for universal screwdriver availability. Hex socket 350kcmil line wire binding screw for ease of torquing large wires. Optional hex socket load screws.

**GET STARTED**

This catalog has been provided to help you build the right part for your project. This catalog is also user interactive, select an kit option (or image), and you'll jump to that kit's specifications. Please click here to get started, or scroll down. You may also print this at any time.



"24S4-3" WIRE BODY.  
24 WIRE HOLES, 4-14 AWG,  
TWO MOUNTING BOLT HOLES.  
[CLICK TO SEE MORE  
ON PAGE 6](#)



36S4-3 WIRE BODY.  
36 WIRE HOLES, 4-14 AWG,  
TWO MOUNTING BOLT HOLES,  
[CLICK TO SEE MORE  
ON PAGE 7](#)



600 VOLT KIT  
WITH 5/16-18 UNC  
HEX WASHER HEAD CAP  
SCREW  
[CLICK TO SEE MORE  
ON PAGE 3](#)



2000 VOLT KIT  
WITH 5/16-18 UNC  
HEX CAP SCREW & WASHER  
[CLICK TO SEE MORE  
ON PAGE 4](#)



S350 KIT  
WITH 5/16-18 UNC  
HEX WASHER HEAD CAP  
SCREW & WASHER  
[CLICK TO SEE MORE  
ON PAGE 5](#)



"600v-Kit" Voltage Insulator  
With 5/16-18 UNC x 3/4 long  
Hex washer screw  
[CLICK TO SEE MORE  
ON PAGE 3](#)



"2000v-Kit" Voltage Insulator  
With 5/16-18 UNC x 3/4 long Hex  
washer screw, and  
5-16 SAE flat washer  
[CLICK TO SEE MORE ON PAGE 4](#)



"S350-Kit" 350kcmil-6 AWG  
24 WIRE HOLES, 4-14 AWG,  
TWO MOUNTING BOLT HOLES,  
[CLICK TO SEE MORE ON PAGE 5](#)



"24S4-3" WIRE BODY.  
24 WIRE HOLES, 4-14 AWG,  
TWO MOUNTING BOLT HOLES.  
[CLICK TO SEE MORE  
ON PAGE 6](#)



36S4-3 WIRE BODY.  
36 WIRE HOLES, 4-14 AWG,  
TWO MOUNTING BOLT HOLES,  
[CLICK TO SEE MORE  
ON PAGE 7](#)



"24S4-3-S350"  
24 WIRE HOLES, 4-14 AWG,  
TWO MOUNTING BOLT HOLES,  
[CLICK TO SEE MORE ON PAGE 8](#)



"24S4-3-600v"  
24 WIRE HOLES, 4-14 AWG,  
x2 600 Volt Insulators,  
with supplied hardware.  
[CLICK TO SEE MORE ON PAGE 9](#)



"24S4-3-S350-600v"  
24 WIRE HOLES, 4-14 AWG,  
TWO MOUNTING BOLT HOLES,  
[CLICK TO SEE MORE ON PAGE 10](#)



"24S4-3-S350-600v"  
24 WIRE HOLES, 4-14 AWG,  
TWO MOUNTING BOLT HOLES,  
[CLICK TO SEE MORE ON PAGE 11](#)



"24S4-3-S350-2000v"  
24 WIRE HOLES, 4-14 AWG,  
TWO MOUNTING BOLT HOLES,  
[CLICK TO SEE MORE ON PAGE 12](#)



"36S4-3-S350"  
36 WIRE HOLES, 4-14 AWG,  
WITH 350kcmil-6 AWG WIRE LUG,  
[CLICK TO SEE MORE ON PAGE 13](#)



"36S4-3-600v".  
36 WIRE HOLES, 4-14 AWG,  
x2 600 Volt Insulators,  
with supplied hardware.  
[CLICK TO SEE MORE ON PAGE 14](#)



"36S4-3-2000v"  
36 WIRE HOLES, 4-14 AWG,  
x2 2000 Volt Insulators,  
with supplied hardware.  
[CLICK TO SEE MORE ON PAGE 15](#)



"36S4-3-S350-600v"  
36 WIRE HOLES, 4-14 AWG,  
x2 600 Volt Insulators, & (1) 350kcmil-6  
AWG WIRE LUG with supplied hardware.  
[CLICK TO SEE MORE ON PAGE 16](#)



"36S4-3-S350-2000v"  
36 WIRE HOLES, 4-14 AWG,  
x2 2000 Volt Insulators, & (1) 350kcmil-6  
AWG WIRE LUG with supplied hardware.  
[CLICK TO SEE MORE ON PAGE 17](#)



36S4-3-x2-S350 KIT.  
36 WIRE HOLES, 4-14 AWG,  
(x2) 350kcmil-6 AWG wire lug,  
with supplied hardware.  
[CLICK TO SEE MORE ON PAGE 18](#)



"36S4-3-S350-600v"  
36 WIRE HOLES, 4-14 AWG,  
x2 600 Volt Insulators, & 350kcmil-6 AWG  
WIRE LUG with supplied hardware.  
[CLICK TO SEE MORE ON PAGE 19](#)



"36S4-3-S350-2000v"  
36 WIRE HOLES, 4-14 AWG,  
x2 2000 Volt Insulators, & 350kcmil-6 AWG  
WIRE LUG with supplied hardware.  
[CLICK TO SEE MORE ON PAGE 20](#)

[Click here to see the 600 volt  
insulator lug part schematics](#)

[Click here to see the 2000 volt  
insulator lug part schematics](#)

[Click here to see the 24 wire/hole  
line lug part schematics](#)

[Click here to see the 36 wire/hole  
line lug part schematics](#)

Click on a picture or description to see more details about this product.  
Please contact us if you have any questions:

Phone: 330-562-8983 | Fax: 330-562-9990  
e-Mail: [sales@lugsdirect.com](mailto:sales@lugsdirect.com)

## 600 Volt Insulator Kit



600 volt insulator, UL508A List SA1.1 category QEUY2  
Recognized standoffs for power voltages and floating  
ground applications when used in accordance with  
UL508A and NEC code requirements. Screw for lug to  
standoff fastening is provided. Zinc plated steel screw.



Kit includes: (x1) 600 volt insulator,  
(x1) 5/16-18 UNC x  $\frac{3}{4}$  long Steel zinc  
plated RoHS hex washer head screw.  
*Two kits are needed to complete a full kitted  
project.*

TO BE ADDED WITH OTHER  
AVAILABLE KIT OPTIONS.  
See website for current pricing.  
<https://lugsdirect.com>

Click to see part  
schematics

RETURN  
TO MENU

## 2000 Volt Insulator Kit



2000 volt insulator, UL508A List SA1.1 category QEUY2  
Recognized standoffs for power voltages and floating  
ground applications when used in accordance with  
UL508A and NEC code requirements. Screw for lug to  
standoff fastening is provided Zinc plated steel  
screw and 5/16 SAE flat washer, steel zinc plated and  
RoHS.



Kit includes: (x1) 2000 volt insulator,  
(x1) 5/16-18 UNC x 7/8" long Steel zinc  
plated RoHS hex head cap screw and (x1)  
5/16 SAE flat washer steel zinc plated  
RoHS.

*Two kits are required to complete a full kit  
project.*

TO BE ADDED WITH OTHER  
AVAILABLE KIT OPTIONS.  
See website for current pricing.  
<https://lugsdirect.com>

Click to see part  
schematics

RETURN  
TO MENU

## S350-Kit



350 kcmil-6 AWG wire range, and FLEX wire class G-K including mm2 class 5, 1 barrel, aluminum or copper wire, CU9AL, 90C temperature rating, one mounting hole of .343 inch dia 5/16" bolt, UL Listed, CSA Certified.



Supplied with 5/16-18 UNC x  $\frac{3}{4}$  long Steel zinc plated RoHS hex head cap screw and (1) 5/16 SAE flat washer steel zinc plated RoHS.

### EXAMPLES OF S350-KITS FULLY ASSEMBLED IN KITTED PROJECTS



TO BE ADDED WITH OTHER  
AVAILABLE KIT OPTIONS.  
See website for current pricing.  
<https://lugsdirect.com>

RETURN  
TO MENU



## 24S4-3



Multi-wire, Lug body only.

(24) twenty four 4-14 wire holes lug for power distribution, power collection, structure grounding, floating ground or neutral bar applications.

UL486 ZMVV Listed, UL508A SA1.1 Listed category, and CSA Certified. (2) two mounting bolt holes with clearance for ¼" full threaded bolts and threaded for 5/16 UNC bolts.

May be bus mounted, bare panel case, or bare chassis mounted or insulated using optional UL508A List SA1.1 category QEUY2 Recognized standoffs for power voltages up to 2000V and floating ground applications when used in accordance with UL508A and NEC code requirements. Copper and tin plated aluminum high strength alloy. Zinc plated steel slotted screws.

TO BE ADDED WITH OTHER  
AVAILABLE KIT OPTIONS.  
See website for current pricing.  
<https://lugsdirect.com>



Customer Supplied  
Mounting bolts from the top  
(1/4-20 bolts X2)



Customer Supplied  
Mounting bolts from the bottom  
(5/16-18 bolts X2)

RETURN  
TO MENU

## 36S4-3



### Multi-wire, Lug Body Only

(36) thirty six 4-14 wire holes lug for power distribution, power collection, structure grounding, floating ground or neutral bar applications.

UL486 ZMVV Listed, UL508A SA1.1 Listed category, and CSA Certified. (2) two mounting bolt holes with clearance for 1/4" full threaded bolts and threaded for 5/16 UNC bolts.

May be bus mounted, bare panel case, or bare chassis mounted or insulated using optional UL508A List SA1.1 category QEUY2 Recognized standoffs for power voltages up to 2000V and floating ground applications when used in accordance with UL508A and NEC code requirements. Copper and tin plated aluminum high strength alloy. Zinc plated steel slotted screws.

TO BE ADDED WITH OTHER  
AVAILABLE KIT OPTIONS.  
See website for current pricing.  
<https://lugsdirect.com>



Customer Supplied  
Mounting bolts from the top  
(1/4-20 bolts X2)



Customer Supplied  
Mounting bolts from the bottom  
(5/16-18 bolts X2)

RETURN  
TO MENU

# 24S4-3-S350-KIT



After customer assembly of line lug

Multi-wire lug supplied with (1) Kitted 350 kcmil-6 AWG line lug with mounting screw & washer. Anti-rotation feature prevent twisting of lug when tightening mounting screw or wire binding screw of mounting lug.

(24) Twenty-four 4-14 wire holes lug for power distribution, power collection, structure grounding, floating ground or neutral bar applications. UL486 ZMVV Listed, UL508A SA1.1 Listed category, and CSA Certified. (2) Two mounting bolt holes with clearance for ¼" full threaded bolts and threaded for 5/16 UNC bolts.



May be bus mounted, bare panel case, or bare chassis mounted or insulated using optional UL508A List SA1.1 category QEUY2 Recognized standoffs for power voltages up to 2000V and floating ground applications when used in accordance with UL508A and NEC code requirements. Copper and tin plated aluminum high strength alloy. Zinc plated steel slotted screws.

## Purchase list for **24S4-3-S350-KIT.**

- (x1) 24S4-3 Body per kit project.
- (x1) S350-Kit, per kit project.

See website for current pricing.  
<https://lugsdirect.com>



24S4-3 BODY



S350-KIT

RETURN  
TO MENU



# 24S4-3-600V-KIT



After customer assembly of line lug

Multi-wire lug with (2) two SA1.1 category QEUY2 600 volt standoffs. (24) twenty four 4-14 wire holes lug for power distribution, power collection, structure grounding, floating ground or neutral bar applications. UL486 ZMVV Listed, UL508A SA1.1 Listed category, and CSA Certified. (2) Two mounting bolt holes with clearance for 1/4" full threaded bolts and threaded for 5/16 UNC bolts.



Insulated using (2) two UL508A List SA1.1 category QEUY2 Recognized standoffs for power voltages up to 600V and floating ground applications when used in accordance with UL508A and NEC code requirements. (2) Two screws for lug to standoff fastening is provided. Copper and tin plated aluminum high strength alloy. Zinc plated steel slotted screws.

## Purchase list for 24S4-3-600V-KIT

- (x1) 24S4-3 Body per kit project.
  - (x2) 600 Volt Insulator-Kit, per kit project.
- Two kits are needed to complete one full kit-project.*

See website for current pricing.  
<https://lugsdirect.com>



24S4-3 BODY



600v insulator-KIT

[Click to see part schematics](#)

[RETURN TO MENU](#)

# 24S4-3-2000V-KIT



After customer assembly of line lug

Multi-wire lug with (2) two SA1.1 category QEUY2 2000 volt standoffs. (24) twenty four 4-14 wire holes lug for power distribution, power collection, structure grounding, floating ground or neutral bar applications. UL486 ZMVV Listed, UL508A SA1.1 Listed category, and CSA Certified. (2) Two mounting bolt holes with clearance for 1/4" full threaded bolts and threaded for 5/16 UNC bolts.



Insulated using (2) two UL508A List SA1.1 category QEUY2 Recognized standoffs for power voltages up to 2000V and floating ground applications when used in accordance with UL508A and NEC code requirements. (2) Two screws for lug to standoff fastening is provided. Copper and tin plated aluminum high strength alloy. Zinc plated steel slotted screws.

## Purchase list for 24S4-3-2000V-KIT

- (x1) 24S4-3 Body per kit project.
- (x2) 2000 volt insulator, per kit project.  
*Two kits are needed to complete one full kit-project.*

See website for current pricing.  
<https://lugsdirect.com>



24S4-3 BODY

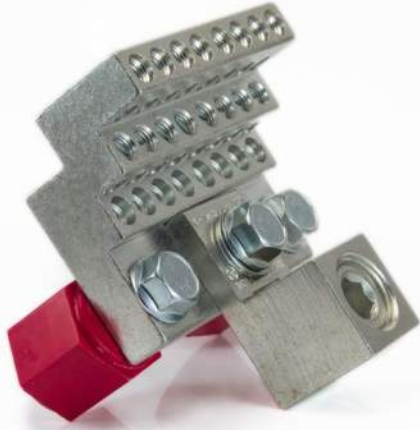


2000v insulator-KIT

Click to see part  
schematics

RETURN  
TO MENU

# 24S4-3-S350-600V-KIT



After customer assembly of line lug

Multi-wire lug supplied with (1) Kitted 350 kcmil-6 AWG line lug and mounting screw & washer. Anti-rotation feature prevents twisting of lug when tightening mounting screw or wire binding screw.

(24) twenty four 4-14 wire holes lug for power distribution, power collection, structure grounding, floating ground or neutral bar applications.

UL486 ZMVV Listed, UL508A SA1.1 Listed category, and CSA Certified.  
(2) Two mounting bolt holes with clearance for 1/4" full threaded bolts and threaded for 5/16 UNC bolts.

Insulated using (2) two UL508A List SA1.1 category QEUY2 Recognized standoffs for power voltages up to 600V and floating ground applications when used in accordance with UL508A and NEC code requirements. (2) Two screws for lug to standoff fastening is provided. Copper and tin plated aluminum high strength alloy. Zinc plated steel slotted screws.



## Purchase list for 24S4-3-S350-600V-KIT

- (x1) 24S4-3 Body per kit project.
- (x1) S350-Kit, per kit project.
- (x2) 600 Volt Insulator kits, per kit project.

See website for current pricing.  
<https://lugsdirect.com>



24S4-3 BODY



S350-KIT



600v insulator-KITS

[Click to see part schematics](#)

[RETURN TO MENU](#)

# 24S4-3-S350-2000V-KIT



After customer assembly of line lug

Multi-wire with (2) two SA1.1 category QEUY2 2000 volt standoffs. (24) twenty four 4-14 wire holes lug for power distribution, power collection, structure grounding, floating ground or neutral bar applications.

UL486 ZMVV Listed, UL508A SA1.1 Listed category, and CSA Certified. (2) Two mounting bolt holes with clearance for 1/4" full threaded bolts and threaded for 5/16 UNC bolts.



Parts sold separately

Insulated using (2) two UL508A List SA1.1 category QEUY2 Recognized standoffs for power voltages up to 2000V and floating ground applications when used in accordance with UL508A and NEC code requirements. (2) Two screws for lug to standoff fastening is provided. Copper and tin plated aluminum high strength alloy. Zinc plated steel slotted screws.

## Purchase list for 24S4-3-S350-2000V-KIT

- (x1) 24S4-3 Body per kit project.
- (x1) S350-Kit, per kit project.
- (x2) 2000 Volt Insulator kits, per kit project.

See website for current pricing.  
<https://lugsdirect.com>



24S4-3 BODY



S350-KIT



600v insulator-KITS

Click to see part  
schematics

RETURN  
TO MENU

# 36S4-3-S350-KIT



After customer assembly of line lug

Multi-wire lug supplied with (1) Kitted 350 kcmil-6 AWG line lug and mounting screw & washer. Anti-rotation feature prevent twisting of lug when tightening mounting screw or wire binding screw.

(36) thirty six 4-14 wire holes lug for power distribution, power collection, structure grounding, floating ground or neutral bar applications.

UL486 ZMVV Listed, UL508A SA1.1 Listed category, and CSA

Certified. (2) Two mounting bolt holes with clearance for 1/4" full threaded bolts and threaded for 5/16 UNC bolts.

May be bus mounted, bare panel case, or bare chassis mounted or insulated using optional UL508A List SA1.1 category QEUY2 Recognized standoffs for power voltages up to 2000V and floating ground applications when used in accordance with UL508A and NEC code requirements. Copper and tin plated aluminum high strength alloy. Zinc plated steel slotted screw.



Parts sold separately

## Purchase list for 36S4-3-S350-KIT

- (x1) 36S4-3 Body per kit project.
- (x1) S350-Kit, per kit project.

See website for current pricing.  
<https://lugsdirect.com>



36S4-3 BODY



S350-KIT

RETURN  
TO MENU



# 36S4-3-600V-KIT



After customer assembly of standoffs

Multi-wire lug with (2) two SA1.1 category QEUY2 600 volt standoffs. (36) thirty six 4-14 wire holes lug for power distribution, power collection, structure grounding, floating ground or neutral bar applications.

UL486 ZMVV Listed, UL508A SA1.1 Listed category, and CSA Certified. (2) Two mounting bolt holes with clearance for 1/4" full threaded bolts and threaded for 5/16 UNC bolts.



Parts sold separately

Insulated using (2) two UL508A List SA1.1 category QEUY2 Recognized standoffs for power voltages up to 600V and floating ground applications when used in accordance with UL508A and NEC code requirements. (1) One screw for standoff fastening is provided. Copper and tin plated aluminum high strength alloy. Zinc plated steel slotted screw.

## Purchase list for 36S4-3-600V-KIT

- (x1) 36S4-3 Body per kit project.
- (x2) 600v-Kit, per kit project.

See website for current pricing.  
<https://lugsdirect.com>



36S4-3 BODY



600v insulator-KITS

Click to see part  
schematics

RETURN  
TO MENU

# 36S4-3-2000V-KIT



After customer assembly of standoffs

Multi-wire lug with (2) two SA1.1 category QEUY2 1500 volt standoffs. (36) thirty six 4-14 wire holes lug for power distribution, power collection, structure grounding, floating ground or neutral bar applications.

UL486 ZMVV Listed, UL508A SA1.1 Listed category, and CSA Certified. (2) Two mounting bolt holes with clearance for  $\frac{1}{4}$ " full threaded bolts and threaded for 5/16 UNC bolts.



Parts sold separately

Insulated using (2) two UL508A List SA1.1 category QEUY2 Recognized standoffs for power voltages up to 2000V and floating ground applications when used in accordance with UL508A and NEC code requirements. (1) One screw for standoff fastening is provided. Copper and tin plated aluminum high strength alloy. Zinc plated steel slotted screw.

## Purchase list for 36S4-3-2000V-KIT

- (x1) 36S4-3 Body per kit project.
- (x2) 2000V-Kit, per kit project.



36S4-3 BODY

2000v insulator-KITS

See website for current pricing.  
<https://lugsdirect.com>

Click to see part  
schematics

RETURN  
TO MENU

# 36S4-3-S350-600V-KIT



After customer assembly  
of line lug and standoffs

Multi-wire supplied with (1) Kitted 350 kcmil-6 AWG line lug and mounting screw & washer. Anti-rotation feature prevent twisting of lug when tightening mounting screw or wire binding screw.

(36) thirty six 4-14 wire holes lug for power distribution, power collection, structure grounding, floating ground or neutral bar applications.

UL486 ZMVV Listed, UL508A SA1.1 Listed category, and CSA Certified. (2) Two mounting bolt holes with clearance for 1/4"

full threaded bolts and threaded for 5/16 UNC bolts.

Insulated using (2) two UL508A List SA1.1 category QEUY2 Recognized standoffs for power voltages up to 600V and floating ground applications when used in accordance with UL508A and NEC code requirements. (1) One screw for standoff fastening is provided. Copper and tin plated aluminum high strength alloy. Zinc plated steel slotted screw.



Parts sold separately

## Purchase list for 36S4-3-S350-600V-KIT

- (x1) 36S4-3 Body per kit project.
- (x1) S350-Kit, per kit project.
- (X2) 600V insulators, per kitted project.

See website for current pricing.  
<https://lugsdirect.com>



36S4-3 BODY



600v insulator-KITS



S350-KITS

Click to see part  
schematics

RETURN  
TO MENU

# 36S4-3-S350-2000V-KIT



After customer assembly  
of line lug and standoffs

Multi-wire supplied with (1) Kitted 350 kcmil-6 AWG line lug and mounting screw & washer. Anti-rotation feature prevent twisting of lug when tightening mounting screw or wire binding screw.

(36) thirty six 4-14 wire holes lug for power distribution, power collection, structure grounding, floating ground or neutral bar applications.

UL486 ZMVV Listed, UL508A SA1.1 Listed category, and CSA Certified. (2) Two mounting bolt holes with clearance for 1/4"

full threaded bolts and threaded for 5/16 UNC bolts.

Insulated using (2) two UL508A List SA1.1 category QEUY2 Recognized standoffs for power voltages up to 2000V and floating ground applications when used in accordance with UL508A and NEC code requirements. (1) One screw per standoff fastening is provided. Copper and tin plated aluminum high strength alloy. Zinc plated steel slotted screw.



Parts sold separately

## Purchase list for 36S4-3-S350-2000V-KIT

- (x1) 36S4-3 Body per kit project.
- (x2) 2000V-Kit, per kit project.
- (X1) S350-KIT, per kitted project.

See website for current pricing.  
<https://lugsdirect.com>



36S4-3 BODY



2000v insulator-KITS



S350-KIT

Click to see part  
schematics

RETURN  
TO MENU

# 36S4-3-(x2)S350-600V-KIT



After customer assembly  
of line lugs and standoffs

Multi-wire supplied with (2) kitted 350 kcmil-6 AWG line lug and mounting screw & washer. Anti-rotation feature prevent twisting of lug when tightening mounting screw or wire binding screw.

(36) thirty six 4-14 wire holes lug for power distribution, power collection, structure grounding, floating ground or neutral bar applications.

UL486 ZMVV Listed, UL508A SA1.1 Listed category, and CSA Certified. (2) Two mounting bolt holes with clearance for 1/4" full threaded bolts and threaded for 5/16 UNC bolts.



Parts sold separately

Insulated using (2) two UL508A List SA1.1 category QEUY2 Recognized standoffs for power voltages up to 2000V and floating ground applications when used in accordance with UL508A and NEC code requirements. (1) One screw per standoff fastening is provided. Copper and tin plated aluminum high strength alloy. Zinc plated steel slotted screw.

## Purchase list for 36S4-3-(x2)S350-600V-KIT

- (x1) 36S4-3 Body per kit project.
- (x2) 600V-Kit, per kit project.
- (X2) S350-KIT, per kitted project.

See website for current pricing.  
<https://lugsdirect.com>



36S4-3 BODY

2000v insulator-KITS

S350-KIT

Click to see part  
schematics

RETURN  
TO MENU



# 36S4-3-(x2)S350-2000V-KIT



After customer assembly  
of line lugs and standoffs

Multi-wire supplied with (2) kitted 350 kcmil-6 AWG line lugs and mounting screws & washers. Anti-rotation feature prevent twisting of lug when tightening mounting screw or wire binding screw.

(36) thirty six 4-14 wire holes lug for power distribution, power collection, structure grounding, floating ground or neutral bar applications.

UL486 ZMVV Listed, UL508A SA1.1 Listed category, and CSA Certified. (2) Two mounting bolt holes with clearance for 1/4" full

threaded bolts and threaded for 5/16 UNC bolts.

Insulated using (2) two UL508A List SA1.1 category QEUY2 Recognized standoffs for power voltages up to 2000V and floating ground applications when used in accordance with UL508A and NEC code requirements. (1) One screw per standoff fastening is provided. Copper and tin plated aluminum high strength alloy. Zinc plated steel slotted screw.



Parts sold separately

## Purchase list for 36S4-3-(x2)S350-2000V-KIT

- (x1) 36S4-3 Body per kit project.
- (x2) 2000V-Kit, per kit project.
- (X2) S350-KIT, per kitted project.

See website for current pricing.  
<https://lugsdirect.com>



36S4-3 BODY



2000v insulator-KITS

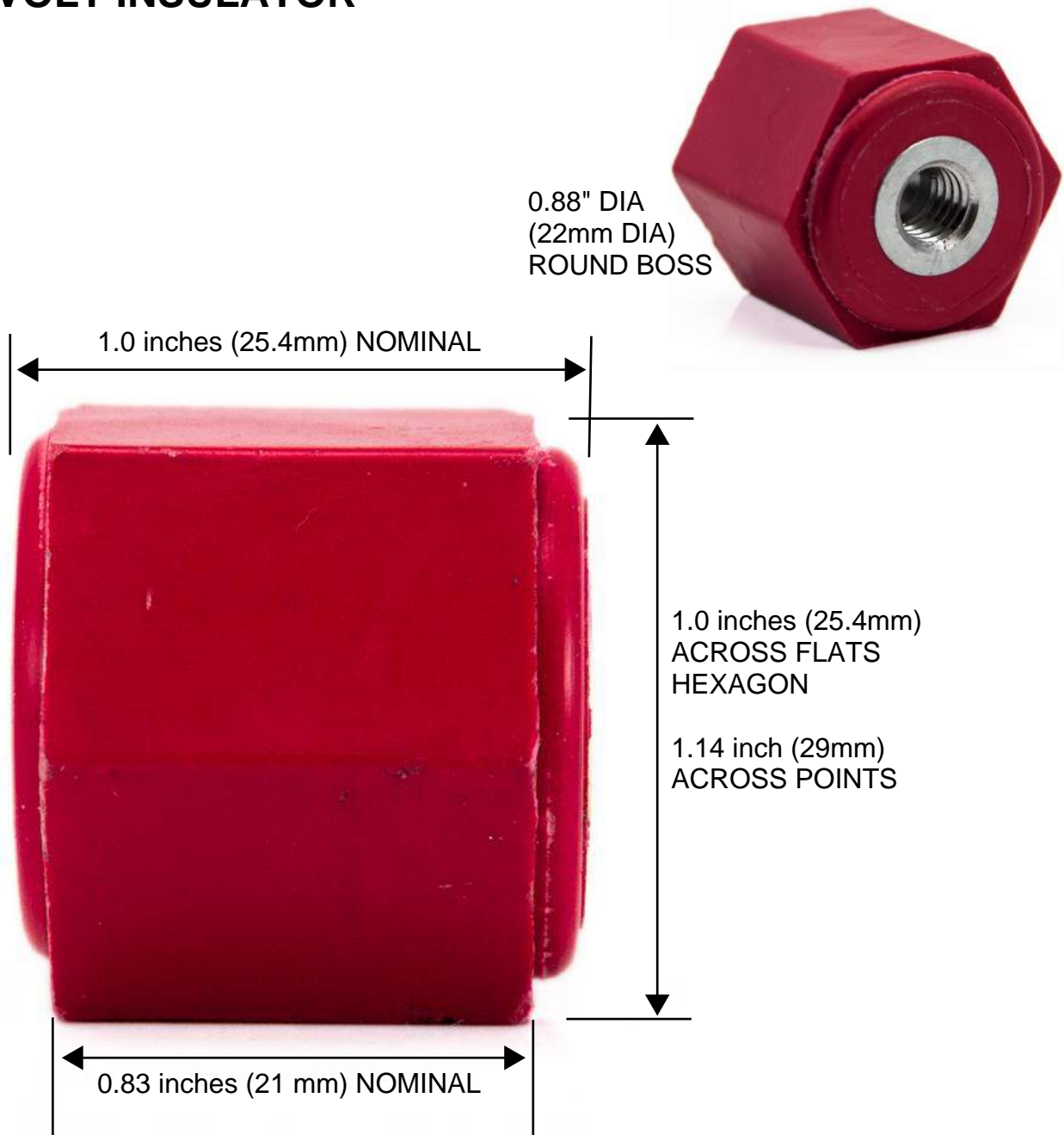


S350-KIT

Click to see part  
schematics

RETURN  
TO MENU

# 600 VOLT INSULATOR



600 VOLT UL891 RECOGNIZED PANELBOARD STANDOFF  
THREADED INSERTS 5/16"-18 THREAD x 1/4" DEEP

STANDARD BOX SIZE 50 STANDOFFS, & 50 LUG MOUNTING  
SCREWS (FOR 25 LUGS)



KITTED WITH (1) STANDOFF & (1) 5/16-18-HEX WASHER  
HEAD CAP BOLT SUITABLE FOR  
36S4-3 OR 24S4-3 POWER DISTRIBUTION / GROUNDING BLOCK  
LUG

(2) REQUIRED FOR EACH LUG ASSEMBLY

# 2000 VOLT INSULATOR

Part Number: "2000v-KIT"



2000 VOLT UL891 RECOGNIZED PANELBOARD STANDOFF  
THREADED INSERTS 5/16"-18 THREAD x 1/4" DEEP  
CSA CERTIFIED

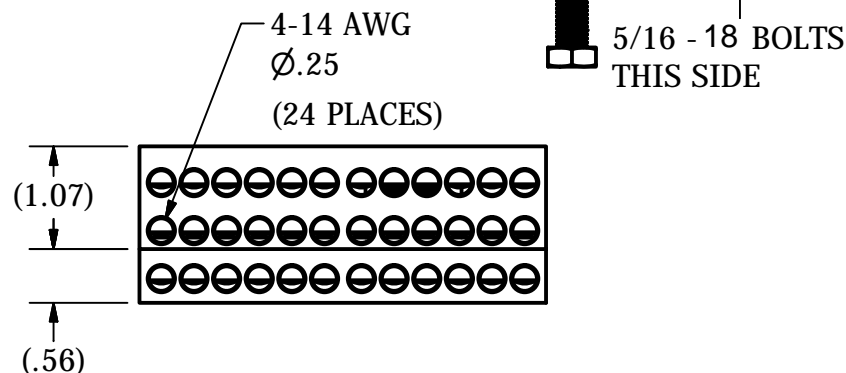
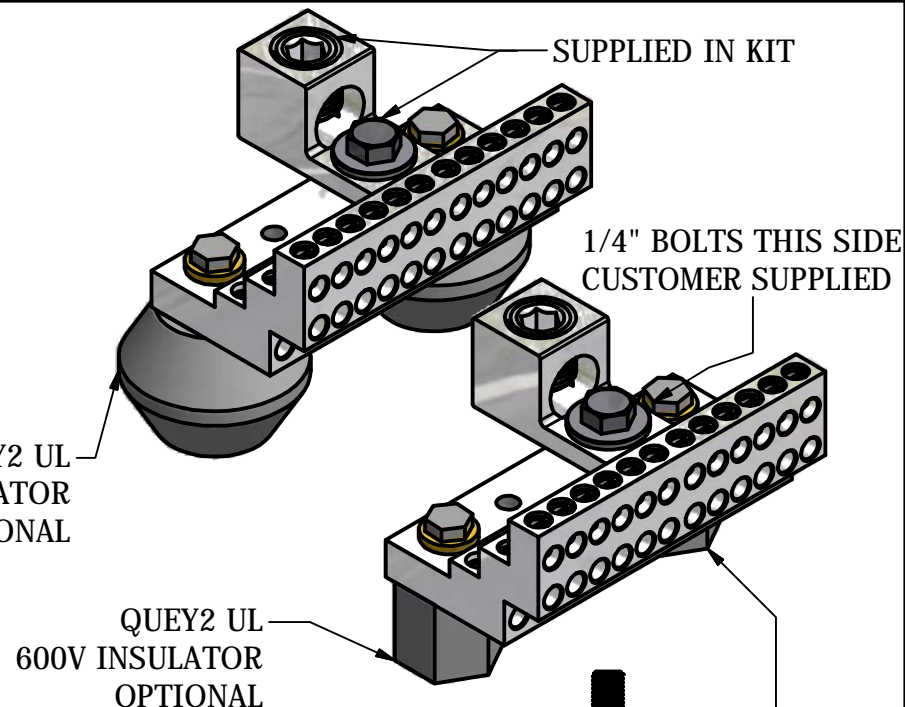
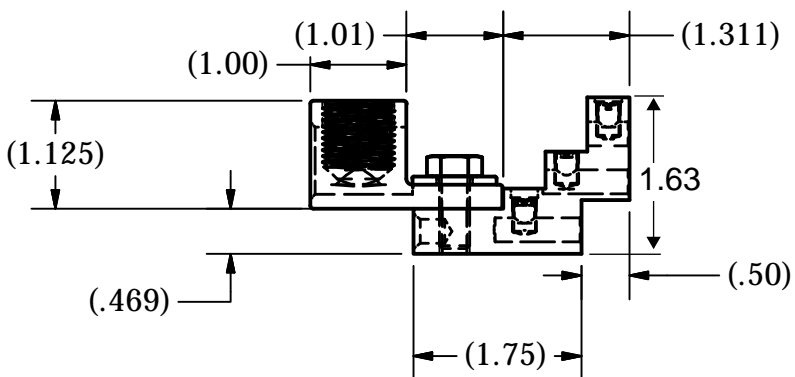
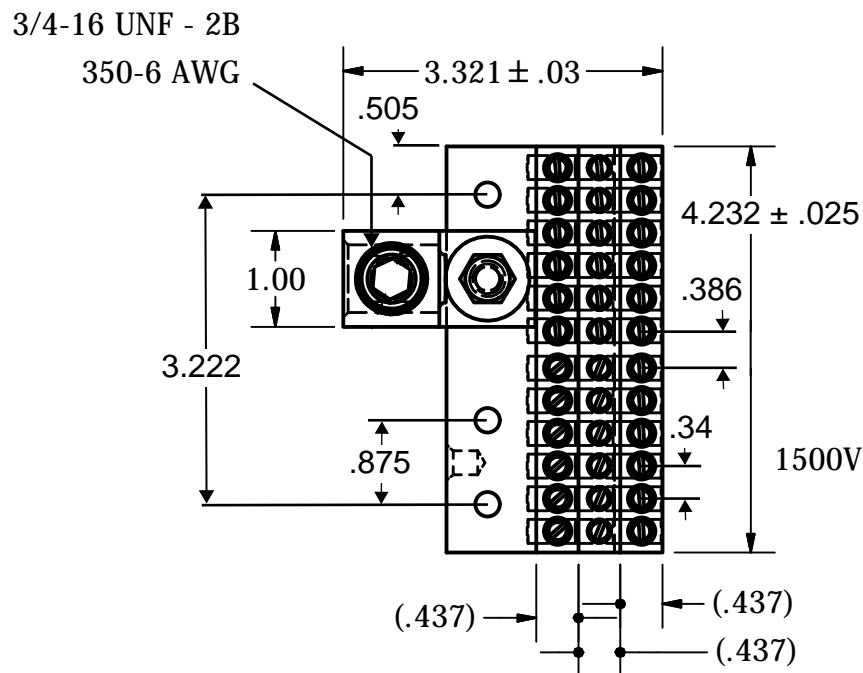
STANDARD BOX SIZE 50 STANDOFFS, & 50 LUG MOUNTING  
SCREWS (FOR 25 LUGS)



KITTED WITH (1) STANDOFF, (1) 5/16 SAE FLAT WASHER  
STEEL ZINC PLATED RoHS, and (1) 5/16-18-HEX WASHER  
HEAD CAP BOLT SUITABLE FOR  
36S4-3 OR 24S4-3 POWER DISTRIBUTION / GROUNDING BLOCK LUG  
TWO (2) REQUIRED FOR EACH LUG ASSEMBLY

|                  |                |
|------------------|----------------|
| DATE:<br>9/24/14 | IHI CONNECTORS |
|------------------|----------------|

NOT FOR USE WHERE FAILURE CREATES A HAZARD TO HUMAN HEALTH OR SAFETY. ALL PRODUCTS ARE SUBJECT TO THIS FULL DISCLAIMER:  
<http://www.ihconnectors.com/disclaimer.html>  
 FOR FURTHER INFORMATION ON THE PROPER USE OF THIS PRODUCT IN SPECIFIC APPLICATIONS SEE  
<http://www.ihconnectors.com/GuideToFlexFineStrandedWireCableMechanicalLugsFAQ.htm>  
<http://www.ihconnectors.com/Technical-Data-Installation.htm>



| B.O.M.   |         |                               |
|----------|---------|-------------------------------|
| QUANTITY | PART    | DESCRIPTION                   |
| 1        | 36S4-3  | 36 X 4 -14 AWG UL LISTED, CSA |
| 1        | S350    | 350-6 AWG UL LISTED, CSA      |
| 1        | 5/16-24 | HEX CAP BOLT AND WASHER       |

NOTE: INSULATING STANDOFFS AND MOUNTING FASTENERS SOLD SEPARATELY

|  |  |  |                  |                             |      |
|--|--|--|------------------|-----------------------------|------|
| THIS DRAWING AND DESIGN ARE THE PROPERTY<br>OF INTERNATIONAL HYDRAULICS, INC.,<br>CLEVELAND, OHIO, AND MAY NOT BE DUPLICATED,<br>USED FOR THE BASIS OF DESIGN OR<br>MANUFACTURE WITHOUT THE WRITTEN<br>PERMISSION OF INTERNATIONAL HYDRAULICS,<br>INC., CLEVELAND, OHIO. |  | INTERNATIONAL HYDRAULICS, INC.                 |                  |                             |      |
| GENERAL TOLERANCES<br>= .015 ( - .038)   |  | TITLE:<br>36S4-3/S350-KIT (SALES)<br>CONNECTOR |                  |                             |      |
| MATERIAL: 6061-T6  |  | SIZE:<br>1/2                                   | DRAWN BY:<br>FJB | DWG NO.:<br>36S4-3/S350-KIT | REV: |
| FINISH: TIN PLATE<br>EMS 131   |  | DATE:<br>6/12/14                               |                  | IHI CONNECTORS              |      |